

# Outbuilding

**Definition:** An enclosed non habitable detached structure such as a garage or garden shed.

## Development Approval

Development Approval is required for almost all Outbuildings.

Information required for lodgement: <http://www.fremantle.wa.gov.au/files/c9c15fd5-261b-4c99-b090-9dcc00b15760/info-req-plan-app.pdf>

Development Approval Application: [http://www.fremantle.wa.gov.au/files/7c679dc4-4146-4c98-b11b-9dac00ee4b05/Form\\_of\\_application\\_for\\_planning\\_approval.pdf](http://www.fremantle.wa.gov.au/files/7c679dc4-4146-4c98-b11b-9dac00ee4b05/Form_of_application_for_planning_approval.pdf)

All outbuildings must comply with the [Residential Design Codes](http://www.planning.wa.gov.au/Subdivision+and+planning+applications/Residential+design+codes/default.aspx) - <http://www.planning.wa.gov.au/Subdivision+and+planning+applications/Residential+design+codes/default.aspx>

## Building Licence

Building Licence is required for all outbuildings.

Information required for lodgement: [http://www.fremantle.wa.gov.au/files/f37f76a5-de04-48f4-86d0-9dcc00b13904/Info-Reqd\\_bldg-Appns.pdf](http://www.fremantle.wa.gov.au/files/f37f76a5-de04-48f4-86d0-9dcc00b13904/Info-Reqd_bldg-Appns.pdf)

Building Licence Application: [http://www.fremantle.wa.gov.au/files/380512a0-8577-4d03-bc3a-9dac00ed62c5/Building\\_Licence\\_Application.pdf](http://www.fremantle.wa.gov.au/files/380512a0-8577-4d03-bc3a-9dac00ed62c5/Building_Licence_Application.pdf)

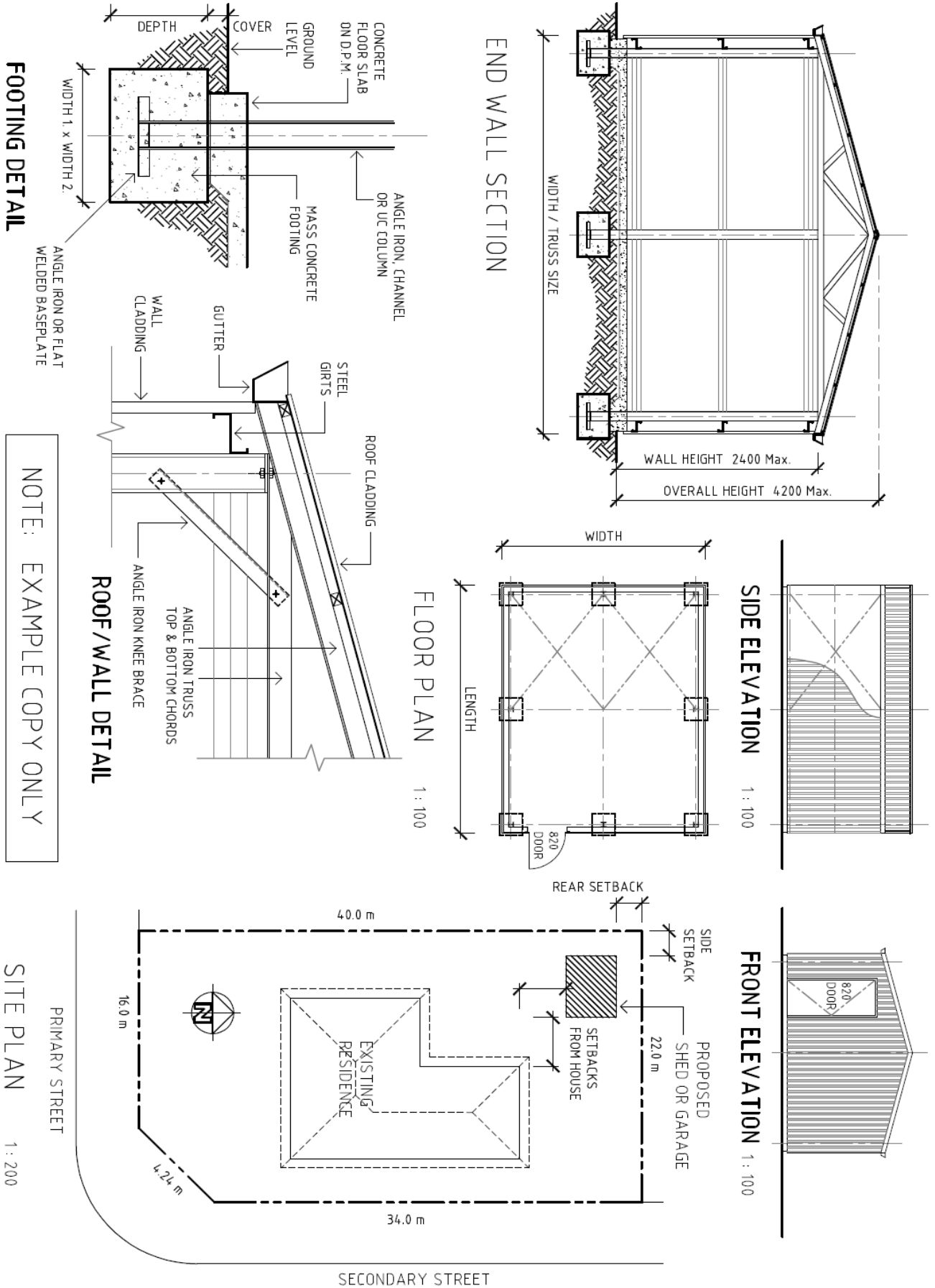
All outbuildings must comply with the Building Codes of Australia.

Where the estimated construction value exceeds \$20,000 the Building Licence may only be issued to an appropriately registered builder or [Builders Registration Board](http://www.builders.wa.gov.au/) approved Owner Builder. Please contact the [Builders Registration Board](http://www.builders.wa.gov.au/) for details - <http://www.builders.wa.gov.au/>

### Lodgement:

Lodge applications at the City's Development Services counter located on the ground floor in the Town Hall Centre open between 9am and 4pm Monday to Friday.

Example of plans for outbuilding



NOTE: EXAMPLE COPY ONLY

### **Where do I find more information?**

The City has an informative website which is a readily available and efficient way to obtain further information.

Phone: (08) 9432 9999

Fax: (08) 9432 9842

E-mail: [planning@fremantle.wa.gov.au](mailto:planning@fremantle.wa.gov.au)

Website: [www.fremantle.wa.gov.au](http://www.fremantle.wa.gov.au)

### **Disclaimer**

*Any statement, opinion or advice expressed or implied in this publication is made in good faith but on the basis that the City of Fremantle, its agents, associated organizations and employees are not liable (whether by reason or negligence, lack of care or otherwise) to any person for any damage or loss whatsoever which has occurred or may occur in relation to that person taking or not taking (as the case may be) action in respect of any representation, statement or advice referred to in this publication. Information in this publication may change without notice*