

One Planet Living Annual Report 2018



Table of Contents

INTRODUCTION	4
CITY OF FREMANTLE POPULATION DEMOGRAPHICS	5
SNAPSHOT OF KEY PROJECTS FOR 2018	6
MESSAGE FROM BIOREGIONAL	9
ONE PLANET ANNUAL REPORT 2018	10
ZERO CARBON ENERGY – CORPORATE	11
ZERO CARBON ENERGY - COMMUNITY	14
ZERO WASTE - CORPORATE	17
ZERO WASTE - COMMUNITY	20
TRAVEL AND TRANSPORT - CORPORATE	23
TRAVEL AND TRANSPORT - COMMUNITY	26
MATERIALS AND PRODUCTS - CORPORATE	30
MATERIALS AND PRODUCTS - COMMUNITY	33
LOCAL AND SUSTAINABLE FOOD - CORPORATE	35
LOCAL AND SUSTAINABLE FOOD - COMMUNITY	37
SUSTAINABLE WATER - CORPORATE	39
SUSTAINABLE WATER - COMMUNITY	42
LAND AND NATURE - CORPORATE	44
LAND AND NATURE - COMMUNITY	48
CULTURE AND COMMUNITY - CORPORATE	51
CULTURE AND COMMUNITY - COMMUNITY	53
EQUITY AND LOCAL ECONOMY - CORPORATE	57
EQUITY AND LOCAL ECONOMY - COMMUNITY	59
HEALTH AND HAPPINESS - CORPORATE	63
HEALTH AND HAPPINESS - COMMUNITY	65
TOP PRIORITIES FOR 2019	69

List of Tables

Table 1 Population demographics for the City of Fremantle	5
Table 2 Summary of key projects carried out in 2018	6

List of Figures

Figure 1 One Planet Principles	4
Figure 2: Carbon emissions from electricity, natural gas and fleet.	12
Figure 3 Solar powered LED lights and electric vehicle charges at Cappuccino Strip car park	16
Figure 4 Food Organics Green Organics three bin system	19
Figure 5 Garage Sale Trail event held at the Fremantle Recycling Centre	21
Figure 6 Reuse store at Recycling Centre	22
Figure 7 Bike Week	29
Figure 8: Pages printed at the City from September 2017 to September 2018.	32
Figure 9: Chris Ferreira: A Place in the Country	38
Figure 10 Scheme and Groundwater consumption from FYE 2016 to FYE 2018	40
Figure 11: Waterwise Garden workshops	43
Figure 12 Perth Biophilic Cities Group with Mayor Brad Pettit	47
Figure 13 Revegetation of Rocky Bay Reserve	47
Figure 14: Greening Samson Project	49
Figure 15: White Gum Valley Pocket Park	49
Figure 16 Aboriginal Elders attending the first Reconciliation Action Plan meeting.	56
Figure 17 Dancing Days	56
Figure 18: Traineeship program	58
Figure 19 The Freo Alternative	60
Figure 20 Relocation of London Planes trees for the King’s Square public realm upgrade	62
Figure 21: South Beach Sports Court opening	68
Figure 22: Buster It’s All About Play	68

INTRODUCTION

One Planet Living is a vision for a sustainable world where people lead healthy, happy lives within their fair share of the earth's resources. It is based on ten principles of sustainability that provide a framework to plan, deliver and communicate sustainable development and guide holistic thinking.

Our Vision: The City of Fremantle aims to become Perth’s most sustainable local government and a global leader – a place where we foster community in a way that supports quality of life, while respecting the limits of the planet on which we live.

The Fremantle One Planet Strategy achieved national One Planet certification in 2014 and international certification 2015. The national targets outlined in the One Planet Fremantle Strategy 2014/15 to 2019/20 were updated to include corporate and community targets that reflect our international certification.

This 2018 Annual Report is the third review of our progress under international certification. The report outlines our progress towards corporate and community targets for each Principle, and details key projects and actions undertaken in 2018. Key priorities for 2019 are outlined in the final section.

Feedback from Bioregional has been incorporated in to this report.

	Health and happiness	Encouraging active, social, meaningful lives to promote good health and wellbeing
	Equity and local economy	Creating safe, equitable places to live and work which support local prosperity and international fair trade
	Culture and community	Nurturing local identity and heritage, empowering communities and promoting a culture of sustainable living
	Land and nature	Protecting and restoring land for the benefit of people and wildlife
	Sustainable water	Using water efficiently, protecting local water resources and reducing flooding and drought
	Local and sustainable food	Promoting sustainable humane farming and healthy diets high in local, seasonal organic food and vegetable protein
	Travel and transport	Reducing the need to travel, encouraging walking, cycling and low carbon transport
	Materials and products	Using materials from sustainable sources and promoting products which help people reduce consumption.
	Zero waste	Reducing consumption, re-using and recycling to achieve zero waste and zero pollution
	Zero carbon energy	Making buildings and manufacturing energy efficient and supplying all energy with renewables

Figure 1 One Planet Principles

CITY OF FREMANTLE POPULATION DEMOGRAPHICS

The City of Fremantle (the City) covers an area of 19 km² and comprises the suburbs of Fremantle, North Fremantle, South Fremantle, White Gum Valley, Beaconsfield, Hilton, O'Connor and Samson.

Population demographics shown in Table 1 are provided by .id¹, and are based on data from the 2016 Australian Census compiled by the Australian Bureau of Statistics², with the exception of 'population working in CoF' which is from Economic ID³. The population numbers provided below are used in this report to calculate data on a per capita basis.

Table 1 Population demographics for the City of Fremantle

	2016	2017	2018
Population living in CoF	30,572	31,568	32,482
Population working in CoF	32,600	31,015	30,426
Households	13,428	13,793	14,168
Av. Household Size	2.22	2.23	2.23

¹ <https://forecast.id.com.au/fremantle/population-households-dwellings>

² http://www.censusdata.abs.gov.au/census_services/getproduct/census/2016/quickstat/LGA53430?opendocument

³ <https://economic-indicators.id.com.au/>

SNAPSHOT OF KEY PROJECTS FOR 2018

Table 2 provides a summary of the key corporate and community projects carried out for each One Planet principle in 2018. Additional activities and more detailed descriptions are provided in the relevant sections.

Table 2 Summary of key projects carried out in 2018

OP Principle	Project or Activity
Zero Carbon Energy	<ul style="list-style-type: none"> • Implementation of the City’s Energy Plan including review of our energy data and carbon accounting methodology, and reconnection of the solar panels located at the Leisure Centre. • Development application for a 6 MW Solar Farm approved, subject to environmental approvals. Construction expected to begin in late 2019. • Support for the RENew Nexus project, an Australian-first trial that allows peer to peer trading of renewable energy. • Installation of four EV charges and solar powered LED lights in the new Cappuccino St car park. Other environmentally friendly features of the new car park include recycled road base materials, storm water capture and planting of water-wise native plants.
Zero Waste	<ul style="list-style-type: none"> • Completion of the SMRC’s Food Organics Garden Organics (FOGO) trial and Council approval to roll out FOGO to 12,000 residential houses in late 2019. • Construction and demolition waste recycling – 495 m³ of material was recycled that would otherwise have gone to landfill (43% recycling rate). • Demolition of old Administration building at King’s Square – 98.7% of material recycled. • Garage Sale Trail community sale held at the Fremantle Recycling Centre for the first time. • Opening of a Reuse Store at Recycling Centre, where items that are still in good condition are resold at bargain prices.
Travel and Transport	<ul style="list-style-type: none"> • Staff travel to work survey carried out, showing that nearly 40% of staff are coming to work by a sustainable means. • Review of the City’s Bike Plan. Since 2013 the City has installed 11km of bike lanes and paths and has upgraded 15 locations identified as ‘priority upgrades’. • South Terrace traffic calming: one of five identified intersections upgraded to become more pedestrian friendly.
Materials and Products	<ul style="list-style-type: none"> • Sustainable Events Policy adopted by Council. The policy excludes the use of single-use plastics, balloons, confetti, polystyrene and Styrofoam at City-run events. The policy also contains provisions for events requiring City approval or receiving City support. • Going Digital Project resulted in a reduction in paper use by nearly 50% • Application of 10% sustainability criteria to quotes above \$50,000. This accounts over 50% of the City’s total expenditure. • As part of Sustainable House Day, the City supported Renew and the Fremantle Network to deliver a four day Freo Sustainable Home Expo. Over

OP Principle	Project or Activity
	3500 visitors attended the events and exhibitions promoting sustainable living.
Local and Sustainable Food	<ul style="list-style-type: none"> • Staff were encouraged to adopt a healthy diet through workshops held in August for Nutrition month, staff participation in the Virgin Pulse 100 Day Global Challenge and access to the LGIS Healthy Intel portal. • The City hosted a four week program for the community called Food Sensations which covered a variety of nutrition topics including healthy eating, meal planning and cooking.
Sustainable Water	<ul style="list-style-type: none"> • Maintenance of Waterwise Status for Council and the Leisure Centre through water efficient maintenance practices outlined in our Waterwise Council Action Plan • Leak detection meters installed at two major sites to identify leaks that were then repaired.
Land and Nature	<ul style="list-style-type: none"> • Fremantle was the first Australian city to join the International Biophilic Cities Group. The City committed to monitoring five indicators that were aligned with those in our Greening Fremantle: Strategy 2020 and Urban Forest Plan. • Successful application for a Myer Foundation funded “Friends Groups” capacity building project, in conjunction with members of the South West Group. • Greening Samson project: Mapping indicated that Samson had the lowest canopy coverage in the City and was on average two degrees hotter than nearby suburbs. Samson was therefore identified as a high priority area for the City’s tree planting program and for a community engagement and education program around the benefits of street trees. • Promotion and implementation of the verge garden incentive program, including verge garden assistance and discounted seedlings for residents, a Verge Open Day, Verge Garden workshop and walking tour. • Creation of the White Gum Valley Pocket Park to increase community open space and address walkable catchment gaps in the area.
Culture and Community	<ul style="list-style-type: none"> • Launch of the Successes, Triumphs, Awards and Recognition Scheme (STARS), an electronic reward and recognition scheme for staff. • Community engagement through the MySayFreo website. Engagement has increased from 13,600 visits in 2016 to 32,600 in 2018. • Continued sponsorship of Living Smart sustainability workshops, run at discounted prices for residents. • The City was recognised for its efforts to become an age-friendly city by taking out the Age Friendly Local Government category at the 2018 WA Seniors Awards. The award reflects the City’s efforts to promote health and well-being within the over 55’s community through the Positive Ageing Program. • Formation of the Reconciliation Action Plan Working Group
Equity and Local Economy	<ul style="list-style-type: none"> • Ongoing training for staff including performance management, safety, verbal judo, cultural awareness and operation leadership training • Traineeship program for Indigenous people • Freo Alternative: Council gave final approval for Local Planning Scheme Amendment No. 63, which in designated areas allows single plots of over 600m² to accommodate up to three dwellings, as long as they also meet elevated sustainability and ecology standards. The amendment was approved

OP Principle	Project or Activity
	<p>by the Minister of Planning and gazetted in February 2019.</p> <ul style="list-style-type: none"> • Development of the Destination Marketing Strategic Plan 2018-2022, a high level strategic framework intended to guide destination marketing activities for the next four years.
Health and Happiness	<ul style="list-style-type: none"> • Continuation of the health and wellbeing program for staff, which includes free flu shots, fitness classes, nutrition sessions, massages, ergonomic assessments, skin checks and mental health awareness workshops. • Free community exercise sessions including Fre-O-Fit, South Beach Futsal Fun and opening of the South Beach Sports Court. Sports equipment can also be hired from Fremantle Library for use of Fremantle Oval. • Free entertainment for children including Freo Toy Library Open Day and Buster It's All About Play

MESSAGE FROM BIOREGIONAL

The human impact on our one planet is increasingly becoming clear. Already in 2019, Australia has seen record-breaking extreme heatwaves and flooding. Global insect populations are collapsing which threatens catastrophic collapse of our natural support systems. Scientists are predicting ice-free summers in the arctic by 2035.

At the same time, we're becoming much clearer on the scale of the changes required to reverse these trends. A study by the Lancet, the world's premiere health journal, showed that in wealthy nations we could become healthier and achieve our carbon emissions reduction targets outlined in the Paris Agreement by halving our consumption of meat and sugars.

This can all seem overwhelming and disheartening – yet there are people and organisations showing us that the changes we need to make are possible.

This year the City of Fremantle moved its offices. While free car parking is still offered it is now less convenient than before and this has contributed to a doubling in the number of people cycling to work. This is a 30% drop in people driving to work since 2010! Additionally, the new office, a smaller more efficient building, contributed to a 30% reduction in energy use.

These may seem like unintentional successes but they show how with the City has taken full advantage of all the opportunities that arise it has to improve its sustainability performance.

Elsewhere the City continues to push the sustainability agenda and encourage its citizens to participate. The solar farm on City land that could meet the need of about 10% of local homes has moved a step closer, and the number of houses in Freo with PV on their roof passed 25%. Likewise, the FOGO (food organics green organics) collection trial was successful and will be rolled out across the City in late 2019 – another example of how the City and the residents are working together to improve sustainability performance.

Fremantle has shown it's willing to take the lead in transforming the city; maintaining its Waterwise status for the Leisure Centre and Council, and becoming a foundation partner in the One Million Women app (to help residents reduce their carbon footprint) are recent examples.

But it is also willing to push where necessary. In 2017 the City introduced a 10% sustainability performance weighting for all tenders over \$150,000 and this year the threshold has been reduced to \$50,000. This means about 50% of tenders are now judged partially on their sustainability offer.

No organisation can rise to the sustainability challenge we all face alone, but each organisation can pull all the levers available to it and use its complete sphere of influence to expand its positive impact. The City of Fremantle still has more to do, their water consumption has been increasing for example, but it is certainly a stand-out example of an organisation that understands the challenge of One Planet Living and is willing to lead the way on making the change we so desperately need.

ONE PLANET ANNUAL REPORT 2018

The following sections outline the City's actions in 2018 that work towards our corporate and community targets for each Principle. For the purposes of this document, 'corporate' actions are those that the City takes to meet targets within its own operational boundaries. 'Community' actions are those that the City takes either with external partners, with or on behalf of local business, or with or on behalf of the Fremantle community. Given we are a Local Government and much of our work is for the community, there is often overlap between the two.

In each section, the following information is given:

City of Fremantle Target: The overall corporate or community target for each Principle. Agreed targets are based on the Common International Targets for One Planet Councils, devised by Bioregional. In some areas, our targets have been updated as projects have been completed.

Indicators and Baseline Data: Indicators and baseline data to monitor progress towards agreed targets are provided. Indicators and targets are based on both quantitative and qualitative data.

2018 Data: Indicator data for 2018 that is used to monitor our progress. Data may be provided for the 2018 calendar year or the 2017/18 financial year.

Key Project: Detailed information on the key project or activity undertaken for that principle.

Additional Project or Actions: A description of additional projects and actions for each Principle.

ZERO CARBON ENERGY – CORPORATE

Making buildings energy efficient and delivering all energy with renewable technologies

CITY OF FREMANTLE TARGET

The City of Fremantle will maintain its pledge of carbon neutrality for corporate emissions to 2020 via a mix of green power purchase options, renewable energy and energy efficiency measures. A plan will be in place for all buildings to be powered by 100% renewable energy by 2025.

INDICATOR

Carbon emissions from electricity, natural gas, the City's fleet and refrigerant gases

CARBON EMISSIONS

In line with the recommendations outlined in the City's Corporate Energy Plan (2017), in 2018 a review of our carbon accounting methodology and data from previous years was undertaken. The revised data presented below and in Figure 2 is considered to be a more accurate representation of carbon emissions than what was presented in previous annual reports, as it includes the removal of duplicate data for emissions from electricity, and the addition of emissions from fleet and refrigerant gases. Asset nomenclature has also been revised to ensure consistency of naming between different departments.

The revised data presented below includes:

- Council facilities: 76 facilities including carparks and excluding leased buildings
- Lighting: auxiliary lighting and street lighting
- Parks and reserves
- Sports and physical recreation: Fremantle Leisure Centre, Ken Allen Field and Samson Recreation Centre.
- Fleet data: 50 light vehicles, 39 heavy vehicles and 7 major plant equipment.
- Refrigerant gases for FYE 2018. This was not calculated for FYE 2016 or FYE 2017.

Overall, total emissions have decreased. This can largely be attributed to the move from the old Council Administration Building to Fremantle Oval. The building at Fremantle Oval is considered to be more energy efficient and houses a larger number of people in a smaller space.

Natural gas use is largely attributed to use at the Fremantle Leisure Centre. The increase in gas use between years can be attributed to both natural variation and breakdown of the cogeneration system in FYE 2018.

	FYE 2016	FYE 2017	FYE 2018
Electricity (t CO ₂ e)	4737	4586	3242
Natural Gas (t CO ₂ e)	309	460	565
Fleet (t CO ₂ e)	852	898	917
Refrigerant gases (t CO ₂ e)	-	-	108
TOTAL	5898	5944	4832

RENEWABLE ENERGY PRODUCED

The information below is based on five City buildings and/or facilities with solar panels.

	FYE 2016	FYE 2017	FYE 2018
Solar production (MWh)	33	56	88
Carbon saved (t CO ₂ e)	24	41	66
Renewable proportion (%)	0.5	0.9	2.0

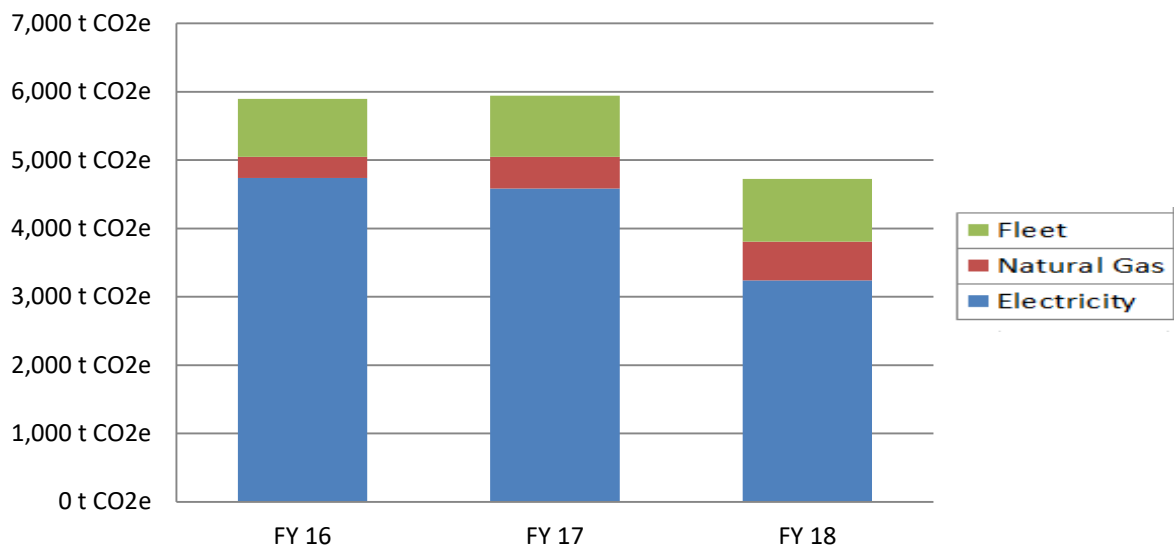


Figure 2: Carbon emissions from electricity, natural gas and fleet.

KEY PROJECT – IMPLEMENTING ACTIONS FROM THE CORPORATE ENERGY PLAN

In 2017, the City engaged private consultants to prepare a Corporate Energy Plan that outlined an achievable pathway for the City to move to running all corporate operations on 100% renewable energy by 2025. In 2018, officers started implementing the stage one actions, including:

- Review of our energy data and carbon accounting methodology. The City currently uses the Greensense platform to monitor our carbon emissions. In 2018, a full review of the electricity and gas accounts feeding into Greensense from the last three years was undertaken, which included updating building asset nomenclature to ensure consistency between financial accounts and Greensense. The City’s fleet emissions were also reviewed and included into our carbon emission estimates, as were refrigerant gases for 2018. The data presented here supersedes data presented in previous annual reports as it is considered to be more accurate.
- Initial preparation of our first Annual Energy Report, outlining energy use in each of the City’s buildings.
- Reconnection of the City’s solar panels located at the Leisure Centre.
- Discussions with our energy retailer (Synergy) around amalgamating our accounts into one large contestable⁴ account, and allowing multiple sources of production and consumption to be interconnected. The creation of a contestable portfolio allows simplification of accounts and increased bargaining power for the City when negotiating electricity supply for a single larger account. At the time of writing, it was not possible for Synergy to interconnect our sources of production and consumption.
- Progress on the South Fremantle Solar farm (see description below)
- Upgrade of any traditional street or park lights to more energy efficient LEDs (see below)
- Audit and recommission of the Cogeneration system at the Leisure Centre to make it more energy efficient (ongoing process).

⁴ A contestable customer is one that consumes over 50 megawatt hours of electricity per year and is allowed to choose their electricity supplier. In comparison, a non-contestable customer in the South West Interconnected System is one that consumes 50 megawatts hours of electricity or less per year, and must use Synergy as their electricity provider.

ADDITIONAL PROJECTS AND ACTIONS

ACTION	DESCRIPTION
South Fremantle Solar Farm	<p>In 2015, the City entered into an exclusive working agreement with Australian-based company Epuron, to progress the development of a large-scale solar farm at a former land fill site in Fremantle. In April 2018, Epuron’s development application for a 6MW solar farm was approved by the City subject to approval of site and construction management plans and environmental approvals being achieved under the Contaminated Sites Act. Development of a 6MW solar farm could power roughly 1700 houses, based on the average home using 20 kWh per day.</p> <p>In September 2018, a business plan for the proposed 25 years lease at a peppercorn rent was approved by Council. At the time of writing, Epuron was close to securing Western Power approval and was working on power purchasing agreements with potential customers, including the major power retailers. Subject to approvals, construction should begin in August 2019 with completion within 12 months.</p> <p>It is expected that Epuron will sell the electricity to a retailer such as Synergy, and the community will be able to purchase the electricity through Synergy’s ‘green power’ option. Council has a clear preference to transition to locally sourced green power and could purchase the green power from the South Fremantle Solar Farm indirectly through the retailer.</p>
Carbon Neutrality	<p>Fremantle has been a carbon neutral Council since 2009. Our residual emissions are currently offset via the purchase of a combination of local biodiversity offsets and certified overseas offsets. In FYE 2016 and 2017, the City purchased 6000 tonnes of carbon to offset emissions. In FYE 2018, the City offset 5000 tonnes of carbon emissions through the surrender of Biodiverse Reforestation Carbon Offsets in the Yarra Yarra Biodiversity Corridor in Western Australia, and internationally certified offsets from bundled wind power projects in India. Our purchase of offsets will decrease as we move towards 100% renewable energy.</p>
Upgrade to LED lights	<p>Solar powered LED streetlights were installed at the new Cappuccino St car park (Figure 3). Other ad-hoc or maintenance upgrades to LEDs were carried out at Princess May Park (3 LED floodlights), Pioneer Park (3 LED floodlights) and Walton Way (1 LED floodlight). Our Facilities Management Team also ensures that LED lights are installed for all new projects/facility upgrades.</p>

ZERO CARBON ENERGY - COMMUNITY

Making buildings more energy efficient and delivering all energy with renewable technologies

Community data was sourced from the Clean Energy Regulator website⁵, specifically from the postcode data for small scale installations spreadsheet, using the postcodes 6159, 6160, 6162 and 6163⁶. Every month the Clean Energy Regulator publishes small-scale renewable energy installation data files according to postcode, including installation of small scale photo voltaic systems and solar hot water heaters. Data from the Clean Energy Regulator reflects residents' attitudes towards and uptake of solar energy.

CITY OF FREMANTLE TARGET			
<i>The City of Fremantle will support the community to access a range of green power purchase options, renewable energy and energy efficiency measures and encourage uptake of renewables through education on and promotion of new technologies, with a goal of City of Fremantle becoming zero carbon by 2025.</i>			
INDICATORS			
Residential solar energy uptake ⁷			
1 Million Women App tracking personal carbon outputs- app released in December 2018, data to be added in the 2019 Annual Report.			
SOLAR PV INSTALLED	2016	2017	2018 ⁸
No. of small scale solar PVs installed	283	396	307
Total small scale solar in CoF since 2001	2909	3298	3605
% of households with solar PVs	22	24	25
SOLAR HOT WATER INSTALLED	2016	2017	2018 ⁷
No. of solar water heaters installed	106	103	100
Total solar water heaters in CoF since 2001	1813	1916	2016
% of households with solar hot water	13.5	13.9	14.2

KEY PROJECT – LAUNCH OF THE 1 MILLION WOMAN APP

On 12th December 2018, 1 Million Woman launched their new app, in partnership with the City and 14 other foundation partners across Australia. The free to download App provides users with daily carbon reduction tips around everyday lifestyle choices, in the key areas of home energy reduction and clean energy options, minimising food waste, reducing overconsumption, sustainable fashion and low-impact travel. The App is aimed at women but is also available to men.

The App will track community actions to reduce carbon emissions, and will showcase individual and collective impact through real time measures, including a 'map' showing where users are

⁵ <http://www.cleanenergyregulator.gov.au/RET/Forms-and-resources/Postcode-data-for-small-scale-installations>

⁶ There are 11 suburbs in the postcode 6163, three of which are in the City of Fremantle. Therefore only a proportion of the solar installations in postcode 6163 were used in these calculations.

⁷ The RET legislation allows a 12 month creation period for registered persons to create their certificates. The data from the 2017 One Planet report has been revised to reflect this.

⁸ Includes data from January to November 2018. December data not yet available.

carrying out the same activities. Individual and collective efforts to reduce carbon emissions will be estimated.

Being a foundation partner will enable the City to use the App to capture data on community climate actions and the actual reduction in carbon emissions as a result of those actions. Regular reports will capture data specific to the City. A dedicated group page for City participants will be created, where we can upload stories, events and initiatives in our council area. Data collected from the app will be available in 2019.

A link to the app can be found at <https://www.1millionwomen.com.au/campaigns/1-million-women-app/>

ADDITIONAL PROJECTS AND ACTIONS

ACTION	DESCRIPTION
<p>Support for RENEW Nexus.</p>	<p>RENeW Nexus is an Australian-first trial that allows peer to peer trading of renewable energy, enabling households with rooftop solar to trade their excess energy to their neighbours using a blockchain enabled platform. About 40 residential properties are taking part in the trial, which went live in late November 2018 and will run till June 2019.</p> <p>The trial gives households the flexibility to determine how much they are willing to buy and sell solar energy for, and to make the purchase via a blockchain-enabled platform. A fixed-use residential tariff and a new billing system have been developed for the trial, allowing households to engage in discrete, time-based energy transactions.</p> <p>The RENEW Nexus project is supported by the Australian Government through the Smart Cities and Suburbs Program. The project is managed by Curtin University and includes the following partners: Murdoch University, Landcorp, Synergy, Western Power, Water Corporation, Power Ledger, energyOS, CSIRO/Data 61, CISCO and City of Fremantle.</p>
<p>Support for the Beyond WGV Project</p>	<p>Through the Beyond WGV project LandCorp has been investigating site specific scenarios for sustainable infill at the Knutsford Precinct (which incorporates the Knutsford and Swanbourne Structure Plans). The emphasis is on the enabling role of distributed district scale infrastructure to deliver low carbon and resilient development particularly the possibility of community battery storage. There is also a focus on establishing community buy-in and setting up engagement structures through which the community can drive the processes that can lead to decarbonizing urban developments.</p>
<p>Cappuccino Strip car park</p>	<p>New solar powered LED lights were installed at the Cappuccino St car park, along with four electric vehicle charges. Customers must pay for parking but can recharge their car free of charge. Other environmentally friendly features of the new Cappuccino Strip car park include recycled road base materials, storm water capture and planting of water-wise native plants.</p>



Figure 3 Solar powered LED lights and electric vehicle charges at Cappuccino Strip car park

ZERO WASTE - CORPORATE

Reducing waste, reusing where possible, and ultimately sending zero waste to landfill

A proportion of the City’s corporate and community waste is collected and transferred to the Southern Metropolitan Regional Council’s (SMRC) Regional Resource Recovery Centre (RRRC) located in Canning Vale. Contents from the waste (green-topped) bin are separated into organic vs non organic, and the organic component is processed into compost used in local farming. The non-organic component goes to landfill. Contents from the recycling (yellow-topped bin) are sorted and baled at the RRRC and sold for reprocessing to make new products both in Australia and overseas. More information on these processes can be found at <http://smrc.com.au/community-information/>.

Corporate, commercial and community waste that is collected by the City that does not go to the SMRC RRRC, and cannot currently be recycled or reused, is sent to Henderson Waste Recovery Park (HWRP) for disposal. The HWRP is a regional waste disposal and recycling facility licenced to accept a range of domestic and commercial waste.

Because our corporate waste is collected in conjunction with community waste, it is difficult to measure the separate corporate waste streams. Our corporate baseline data was obtained by an audit undertaken in 2010. The 2010 figures provide a snapshot of waste information. Some facilities may generate more waste than others due to events and visitors, and the amount of waste generated may change over the course of the year. Due to financial constraints it is not possible to replicate the corporate waste audit per year.

CITY OF FREMANTLE TARGET		
<i>The City of Fremantle will aim to reduce its corporate waste by 25% by 2020 against an agreed baseline and increase its co-mingled recycling and organic waste diversion from landfill to at least 70% in all Council buildings and facilities by 2020.</i>		
INDICATOR		
An annual waste audit will be conducted in the main administration building, to measure and track our goal towards a 25% reduction in corporate waste by 2025.		
BASELINE DATA (2010)	2025 GOAL	
Total waste: 343 tonnes Waste/employee/week: 19kg	Total waste: equal to or less than 246 tonnes Waste/employee/week: 14kg	
CITY RECYCLING DATA		
	FYE 2017	FYE 2018
Construction and Demolition Waste Recycled (m ³)	0	495
Construction and Demolition Waste Recycled (%)	0	43
Close the Loop (kg recycled)	70.9	43.9
Mobile Muster (kg recycled)	46.7	23.2
The decrease in printer cartridges recycled from FYE 17 to FYE 18 is likely due to the decrease in the number of pages we print (see Going Digital project under Materials and Products Corporate). The reduction in mobile phones collected by Mobile Muster could be because residents are also taking their phones to the Fremantle Recycling Centre, and these phones are not represented here. The collection box is also only emptied when full, and at the time of writing it was half full.		

ADDITIONAL 2017 DATA

To gain an understanding of staff waste and recycling habits, in 2017 an audit of under-desk and wheelie bins was carried out in the Council Administration Building (where the majority of full time workers are located). The majority of under-desk bins were less than 10% full, which supported the move to no under-desk bins when the main administration building was relocated to Fremantle Oval in December 2017. The findings are not representative of all council operations, however they reflect staff waste and recycling attitudes and habits. The results were:

Total waste estimate per year: 122 tonnes

Waste/employee/week: 12.8 kg/week

Recycling rate: 80%

The under desk bin audit was not conducted in 2018, as the City no longer has under desk bins. In early 2019, source-separation recycling bins were rolled out throughout the Main Administration building. Audits on the use of these bins by staff will be carried out in 2019.

KEY PROJECT: FOOD ORGANICS GARDEN ORGANICS

In May 2018 Council approved the roll out of a Food Organic Garden Organic (FOGO) waste service to approximately 12,000 residential households in the City in the 2019/20 financial year. The Council decision followed a FOGO trial carried out by the SMRC and three of its member councils – Fremantle, Melville and East Fremantle. The trial ran from October 2017 to July 2018. During this time 7000 residents were supplied with three bins – one for recycling (yellow top), one for organic waste (food and garden clippings; green bin) and one for remaining waste (red bin). The FOGO trial produced some of the best results in the country for diverting organic waste from landfill. In the first six months of the project, 66.5 per cent of all household waste generated from the trial areas was recovered as compost or recycled into new products, above the State government target of 65 per cent of all household waste diverted from landfill by 2020.

A survey of trial participants was undertaken by independent research company Catalyse in April 2018. The findings showed strong support towards the new system with respondents indicating:

- 79% wanted the three-bin FOGO system to continue
- 94% rated weekly FOGO collections positively
- 87% rated fortnightly recycling collections positively
- 69% rated fortnightly general waste collections positively
- 80% agreed they had received the right amount of information about the new system

The SMRC also surveyed residents that were not part of the trial and 77 per cent of respondents in Fremantle said they would like a FOGO bin. Under the new system people will keep their existing yellow-topped recycling bin, and be given a new lime green FOGO bin and a new red general waste bin to replace the old green bin. Around 500 of the old green bins will be kept for future use, and the rest will be recycled for the production of new waste bins.

The three bin system will be introduced to approximately 12,000 residential households in Fremantle starting in late 2019. The roll-out will include a high-profile education program to let people know what to put in each bin and how the system will work.

ADDITIONAL PROJECTS AND ACTIONS

ACTION	DESCRIPTION
<p>Construction and demolition waste recycling program</p>	<p>This program kicked off in 2017. Suitable construction and demolition waste from projects such as roads, footpaths, car parks and drainage paths is collected by a contractor and diverted from landfill at roughly half the cost of the levy, and graded for re-use in other projects. During FYE 2018, 495 cubic meters of material (including concrete and asphalt) was recycled, that would previously have gone to landfill. This represents 43% recycling rate.</p>
<p>Purchase of cardboard baler and aluminium baler</p>	<p>In December 2018, a cardboard baler and an aluminium baler were purchased for the Recycling Centre. The compacters allow the City to increase onsite recovery rates through source separation, resulting in cleaner recycling streams that have a higher market value. Within a few weeks, 15 bales (around 7.5 tonnes) of cardboard were collected for recycling at a price of around \$5500. Around 400 kg of aluminium was collected during the same time period.</p>
<p>King's Square Demolition</p>	<p>In late 2018, the old Council Main Administration Building at King's Square was demolished. A total of 6219 tonnes of recyclable material was removed from site, of which 6135 tonnes was recycled, including 294 tonnes of steel and 5841 tonnes of concrete, resulting in a recycling rate of 98.7%. Note this figure does not include asbestos, as asbestos cannot be recycled and for environmental health reasons must go straight to landfill.</p>



Figure 4 Food Organics Green Organics three bin system

ZERO WASTE - COMMUNITY

Reducing waste, reusing where possible, and ultimately sending zero waste to landfill

A proportion of the City's corporate and community waste is processed at the SMRC's Regional Resource Recovery Centre. Baseline data was sourced from annual waste and landfill and recycling statistics collected by the SMRC in 2015/16 and reported in our 2016 & 2017 annual reports. This annual report also includes data from the City's Waste Census prepared for the Department of Waste and Environmental Regulation. This provides a wider picture of waste and recycling in the City, as it includes data additional to that collected by the SMRC.

CITY OF FREMANTLE TARGET			
<i>The City of Fremantle will support the community to reduce waste generation by 10% against 2015 levels by 2020, and will embark on a city-wide education campaign and waste reduction strategy by 2017 with of goal of a 70% recycling rate by 2020.</i>			
INDICATORS			
Annual SMRC waste to landfill and recycling statistics City of Fremantle DWER Waste Census			
SMRC DATA			
	FYE 2016	FYE 2017	FYE 2018
SMRC waste generated (t)	12,091	11,893	11,799
Waste per capita ⁹ (kg/person/year)	395	377	363
SMRC diversion of waste from landfill (t)	7,627	7,428	7,470
SMRC diversion of waste from landfill (%)	63.1	62.5	63.3
2020 GOAL			
SMRC waste generated: 10,881 tonnes SMRC diversion of waste from landfill: 70%			
COF WASTE AND RECYCLING DATA¹⁰			
	FYE 2016	FYE 2017	FYE 2018
Verge-side Green Waste Recycled (t)	761	808	654
Verge-side Hard Waste Recycled (t)	222	75	157
Drop off Green Waste Recycled (t)	0	0	146
Drop off Hard Waste Recycled (t)	51	84	124
Total Waste Collected (t)	19,539	18,066	16,958
Total Waste Recovered (t)	7,900	7,807	7,801
Recovery Rate (%)	40	43	46
RECYCLING CENTRE INFORMATION			
In November 2017, the City rolled out improved and expanded recycling services with the Recycling Centre doubling in size. In November 2017, 927 vehicles went through the centre and 1653 items			

⁹ Based on population estimates in Table 1

¹⁰ Data from the City of Fremantle DWER Waste Census

recycled, compared to 1553 vehicles and 2019 items recycled in 2018. It is free for residents to drop off items for recycling (excluding tyres and mattresses which have a minimal charge). In total, 14,047 people visited the Recycling Centre during opening hours in 2018.

KEY PROJECT: GARAGE SALE TRAIL COMMUNITY SALE

For the first time, the City held a community sale at the City’s Recycling Centre for the Garage Sale Trail in October 2018. The Garage Sale Trail is an Australia-wide initiative that encourages re-use and recycling practices and community interactions. There were 25 community stalls selling their pre-loved items, Buster It’s All About Fun children’s play bus, the Parks and Landscapes team providing advice on native verge gardens and free seedling giveaways, plus a food and a coffee van. Over 400 people attended the event. Participant feedback was positive and indicated that the community would like the Garage Sale Trail to be a regular event.

Residents were also able to sign up to have their own garage sale, or join another community group sale. 157 stalls were registered across the City, including 59 individual sales, 7 group sales and 91 stalls. Approximately 3,767 people and 1,904 households participated as either a seller or a shopper over the weekend. An average of 87 items at an estimated weight of 424 kg were sold per sale. 25% of sellers admitted that these items would have gone to landfill had they not participated in the sale. Through their participation in the GST, 87% of participants said that they are more conscious about waste and understand their role in reducing it. 47% of shoppers indicated that they bought second hand items for the first time this year on the Trail. Participation also led to an increase in community interactions, with roughly 3,505 interactions over the weekend and 81% of participants indicating they felt more connected to their community.



Figure 5 Garage Sale Trail event held at the Fremantle Recycling Centre

ADDITIONAL PROJECTS AND ACTIONS	
ACTION	DESCRIPTION
Recycling Roadshow	As part of the upgrade to the City’s Recycling Centre, the City embarked on a Recycling Roadshow Roll Out throughout the City. Officers attended five events (including One Day and the Sunset Markets) and different ward locations to disseminate educational information on waste and recycling and provide free giveaways (ie. plastic bag alternatives). Information was provided on the State-wide Plastic Bag Ban, Household Hazardous Waste, the SMRC’s Regional Resource Recovery Facility, updates on changes to recycling and the planned implementation of the Container Deposit Scheme (CDS) in early 2020. Similar to the CDS, officers offered people a 10 cent refund on

ADDITIONAL PROJECTS AND ACTIONS

	<p>their beverage containers at events. A collection point for other items, including batteries, fluorescents, phones and cartridges was also provided. At the South Beach Sunset Markets, a clear bin was borrowed from the City of Cockburn’s ‘Face Your Waste’ campaign, allowing resident’s to clearly view how much waste they were creating. Over 22,000 people were at the events that the Recycling Roadshow attended.</p>
<p>Opening of Reuse Store at the Recycling Centre</p>	<p>In November 2018, the City opened a Re-use Store at the Recycling Centre. Items that are brought in for recycling (excluding computers and phones) that are still in good condition are resold at bargain prices. The store is open to residents and non-residents. Within two months of opening, the store had made \$2270 from the sale of items that would otherwise have been recycled or thrown any.</p>
<p>Reverse vending machine at Esplanade Park</p>	<p>The City installed a reverse vending machine (RVM) at Esplanade Park on a three year contract from September 2015 – September 2018. The reverse vending machine encouraged people to recycle their plastic and aluminium containers. In return for recycling a container, the customer chose one of six vouchers to local businesses. From Jan-August 2018, 1809 containers were recycled through the RVM, including 368 aluminium and 1441 PET bottles. In 2017, 2753 containers were recycled, including 481 aluminium cans and 2272 PET bottles.</p> <p>In mid-2017, the State Government committed to introducing a Container Deposit Scheme in WA, whereby consumers can receive a refund of 10 cents for their empty beverage containers at specific refund points. The City’s Recycling Centre is expected to be one of these refund points. Given the introduction of the Container Deposit Scheme in early 2020 and the State Government’s intention to provide refund points (including RVMs) throughout WA, our contract for the RVM was not renewed.</p>



Figure 6 Reuse store at Recycling Centre

TRAVEL AND TRANSPORT - CORPORATE

Encouraging low carbon modes of transport to reduce emissions, and reducing the need to travel

CITY OF FREMANTLE TARGET

The City of Fremantle will increase staff sustainable transport use by 15% by June 2016 and 30% by 2020, from a 2010 baseline. The City will also reduce corporate transport emissions by at least 30% by 2020, from a 2010 baseline.

INDICATORS

- Travel to work survey
- Fleet emissions data
- Staff use of smart riders for business meetings

BASELINE DATA

A 2010 workplace survey found that:

- 79% of people drove to work
- 6% drove a Council car
- 2% were a passenger
- 8% took public transport
- 5% walked or cycled

2018 DATA (refer to key project for discussion)

A 2018 workplace survey found that:

- 55% of people drove to work
- 2% drove a Council car
- 8% were a passenger
- 19% took public transport
- 12% walked or cycled

2020 GOAL

- 73% car use
- 27% sustainable transport (car as passenger, public transport, walking and cycling)

FLEET EMISSIONS DATA

The City's carbon emissions from our fleet vehicles was calculated based on a combination of reports through the fuel card system from the provider (BP) and depot fuel consumption figures. The City's fleet includes 50 light vehicles, 39 heavy vehicles and 7 major plant equipment.

The data for FYE 2016 includes a lot of estimated data, while the data for FYE 2017 and FYE 2018 is considered to be more accurate. The difference between FYE 2017 and FYE 2018 is considered to be natural variation (2% difference). Fleet numbers have decreased in general and we have added two more efficient hybrid vehicles to the staff fleet, however the majority of impact comes from diesel trucks and utes that are yet to be updated to more fuel efficient vehicles.

FYE 2016	FYE 2017	FYE 2018
852 t CO2e	898 t CO2e	917 t CO2e

STAFF USE OF PUBLIC TRANSPORT

Staff use of public transport for meetings is estimated from use of the staff smart riders (public transport cards) for business meetings. In 2017, they were borrowed 57 times, equating to roughly 114 trips; compared to 92 times in 2018, equating to roughly 184 trips. This is likely to be an underestimate, as staff may use their own public transport cards if going to a meeting to/from home.

KEY PROJECT: STAFF TRAVEL TO WORK SURVEY

In 2018, a staff travel to work survey was carried out, with 133 people responding. 100 employees working in the Main Administration Building responded, representing roughly 50% of all people working in this building. The below infographic shows a snapshot of how people are travelling to work, and the differences between 2010 and 2018.

From 2010 to 2018, there was a drop in the number of people driving from 79% to 55% and an increase in use of public transport from 8% to 19%. The number of people walking or cycling increased from 5% to 12%.

The findings indicate an overall improvement in people taking sustainable transport to and from work, with 39% of people taking public transport, walking, cycling or being a passenger. We are already meeting our 2020 target of 27% sustainable transport. The respondents attributed the improvements to the following factors:

- People's growing awareness of the economic and health factors of using public transport and cycling / walking
- A significant proportion of people live in or close to Fremantle (8% in Fremantle and around 25% within 5km)
- Change in parking arrangements. With the move to our new building, free parking went from being a 100m walk to a 1.2 km walk.

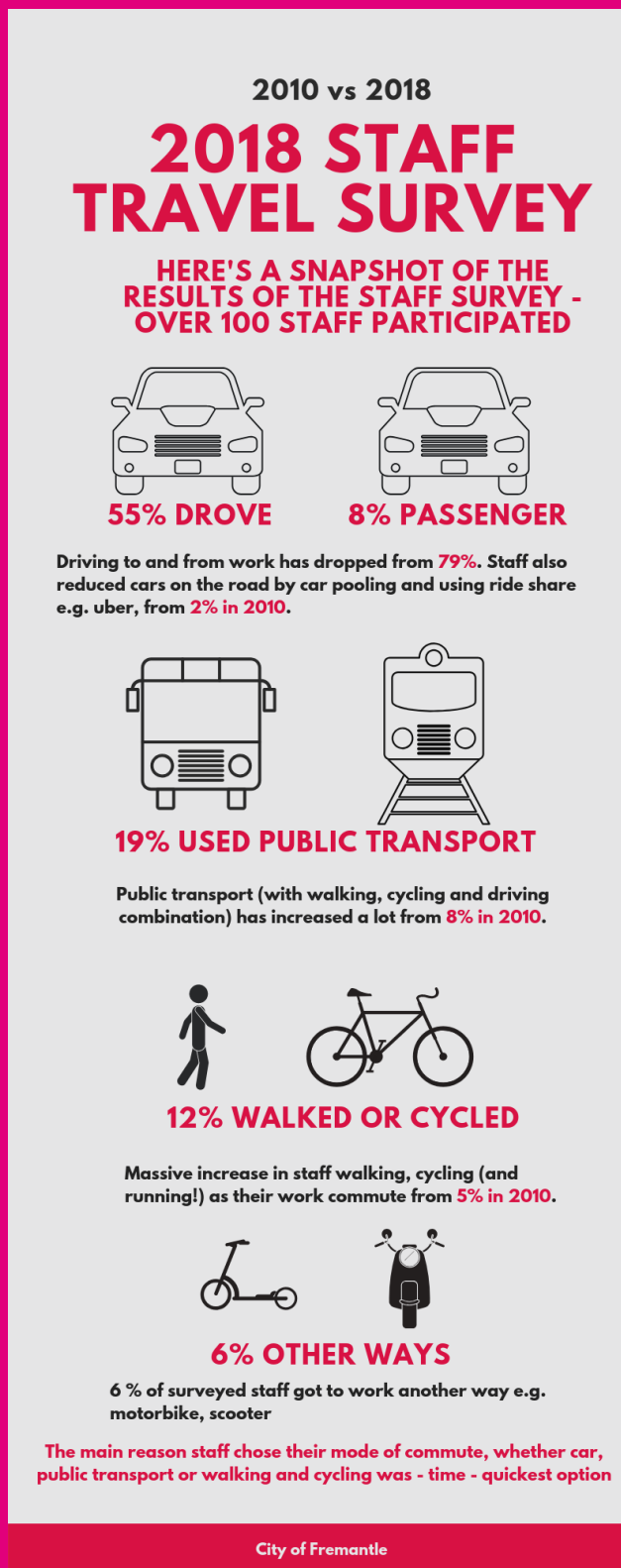
For those that were solely driving their main reasons were:

- Drop off/pick up kids (20%)
- Traveling to sport/gym appointments before and after work (20%)
- Starting and working late/early where public transport options were limited (10%).

The main reasons for using active transports were:

- Cost (31%)
- Exercise (19%) and
- Allows people to use travel time to do things (read, work, social media (13%).

20% of respondents changed their commute over the last 12 months. The main reasons people changed from car to active transport were a change in job which meant they were closer to home or a train station, and for health reasons.



ADDITIONAL PROJECTS AND ACTIONS

ACTION	DESCRIPTION
<p>Fremantle Car Share Expression of Interest</p>	<p>To advance council's objective of facilitating a car share scheme, Phillip Boyle & Associates were engaged by the City to prepare a report to establish how a car share network might feasibly operate in Fremantle. The findings of this investigation were submitted to Council at the meeting on 28 May 2018. Council resolved that Expressions of Interest (EOI) be sought to gauge the willingness of car share operators to establish a car share scheme in Fremantle. An EOI was received from four different car operators, the findings from which were presented to Council (confidential item) in September 2018. Council resolved not to seek tenders at this time given the apparent absence of sufficient market demand to sustain such a business without substantial subsidisation from Council.</p> <p>Council also resolved that our current Car Share Policy SG57 be reviewed to provide greater flexibility to support the initial establishment of a car share scheme in the future. Review of the Car Share Policy is scheduled for the first half of 2019. Officers have continued the car share conversation with other Local Governments, WALGA and the Department of Transport, in the hope that should a viable model emerge, the City will be able to work cooperatively with other interested parties.</p> <p>The City has also been in discussions with other companies that are interested in establishing bike-share and electric scooter share schemes in Fremantle.</p>
<p>Became a platinum 'Your Move' organisation</p>	<p>The Department of Transport's 'Your Move' program includes supporting workplaces to encourage staff to switch more trips from the car to active modes of transport including walking, cycling and public transport. In 2018, the City became a 'platinum' Your Move organisation, in recognition of the work we do in the community and workplace to get people out of cars and on active transport.</p> <p>Work that contributed toward our platinum recognition included:</p> <ul style="list-style-type: none"> • Reinvigoration of staff pool bikes with addition of a formal booking process, staff bike email for questions and assistance, and internal promotion via CoFi and posters • Series of lunchtime bike rides to South Beach • Staff bike maintenance workshop to build capacity and confidence in bike riding • Addition of an electric bike to our bike fleet • Ride to Work breakfast (see Travel and Transport Community section).

TRAVEL AND TRANSPORT - COMMUNITY

Encouraging low carbon modes of transport to reduce emissions, and reducing the need to travel

CITY OF FREMANTLE TARGET

The City of Fremantle will encourage and enable the community to reduce emissions from transport by at least 30% by 2020 in line with the sustainable carbon footprint target.

2020 GOAL

- 38% of people drive
- 44% of people use sustainable transport

INDICATORS

2011 and 2016 Australian Census Data

CAT Bus Patronage (total numbers for the red and blue CAT bus route)

The Annual Bicycle Network Commuter and Recreational Rider Survey

AUSTRALIAN CENSUS DATA: Travel to Work¹¹

	2011	2016
People travelling via car, as a driver	53.7%	56.5%
People travelling via car, as a passenger	3.9%	5.7%
People taking public transport	12.6%	12.6%
<ul style="list-style-type: none"> • Train 	4.1%	4.1%
<ul style="list-style-type: none"> • Bus 	3.6%	3.5%
People walking	5.8%	4.5%
People working from home	5%	5.8%

CAT BUS PATRONAGE

In conjunction with TransPerth, the City provides a free Central Area Transport (CAT) bus service throughout Fremantle. Two routes (red and blue) are available and the buses run every 10-15 minutes every day. The service is free and is heavily subsidised by the City (roughly \$700,000 per year). The passenger numbers below are totals for the red and blue buses.

2015	2016	2017	2018
1,013,440	904,239	892,514	971,619

THE ANNUAL BICYCLE NETWORK COMMUTER AND RECREATIONAL RIDER SURVEY

The Annual Bicycle Network Commuter and Recreational Rider Survey's include Super Tuesday and Super Sunday. The same points are counted each year, although in 2018, two additional points were counted for Super Tuesday (23 sites compared to 21). The Super Tuesday count includes bike riders only, while the Super Sunday count includes bike riders, walkers, runners and others. The Super Sunday count was not undertaken in 2017.

	2016	2017	2018
Super Tuesday	1548	1375	1481
Super Sunday	6513	-	5712

¹¹ Data from www.censusdata.abs.gov.au

KEY PROJECT: UPDATE AND REVIEW OF LOCAL BICYCLE PLAN

The City of Fremantle Local Bicycle Plan (the Plan) was adopted in 2014 with the goal of doubling the number of bike trips in Fremantle by 2018 by providing better cycling infrastructure, reducing the barriers to cycling and encouraging more people to ride a bike. Since 2013 the City of Fremantle has installed 11km of on-road bike lanes, 1km of new bike paths and rolled out Bicycle Awareness Zones over 6km of local and city centre roads. The City has also upgraded more than 2km of path along popular coastal routes, installed more than 160 bike parking bays and added green bike lane treatments at intersections along four major roads. Bike-friendly traffic calming projects such as raised platforms on Ord Street and Wray Avenue and the South Terrace 'node' landscaping treatment were also completed.

Community engagement for the Bike Plan review was carried out from mid-late 2018 and sought to capture people of all ages, current riders and non-riders. Engagement methods included:

- An online survey and 'map my ride' interactive map hosted on My Say Freo
- A visioning and network design workshop with the Bicycle User Group (BUG) and City staff
- One-on-one contact with local schools
- Informal 'drop in' opportunity to discuss riding with officers and BUG members at the Ride to Work breakfast.

Bike cordon counts undertaken in October 2018 at 14 sites around the city centre indicated that overall numbers of people riding to and from the City has risen since the last count in 2012.

Key findings from the review of the Plan included:

- 70% of respondents rode regularly (more than three times a week)
- The top three reasons for riding included leisure and recreation, commuting to work and running errands/going to shops
- The top three reasons for not riding included the lack of bike paths/lanes, unsafe road conditions and speed/volume of traffic on roads
- 12% of rides were within the suburb of Fremantle, 53% of rides were within 5km of the city centre, 31% of rides were less than 10kms and 4% of rides were greater than 10km.

The findings from the engagement process and review will inform the new Bike Plan infrastructure and programs. The updated Bike Plan is expected to be advertised for community comment in early 2019 and presented to Council for consideration following that.

ADDITIONAL PROJECTS AND ACTIONS

ACTION	DESCRIPTION
Integrated Transport Strategy	<p>Actions from the Integrated Transport Strategy include:</p> <ul style="list-style-type: none">• Upcoming investigation into opportunities to reduce vehicle speeds and promoting active and public transport plans in the City Centre and other key City areas. Work with Department of Transport (DoT) and Main Roads to reduce speed limit to 30khr in critical areas.• Perth Cycle Network: DoT have started construction on the missing link from Perth to Fremantle (along Fremantle train line) from Grant Street to Victoria Street station. Planning has begun on the bike path from Victoria Street station to North Fremantle Station with extension across Tydeman Road and the Swan River scheduled for 20/21. The City is advocating for the final link to Fremantle Station.• Public Transport: As part of the South West Group, the City is advocating for the early planning and construction of a rail link (LRT)

ADDITIONAL PROJECTS AND ACTIONS

	<p>between Fremantle to Cockburn Central and Murdoch Activity Centre.</p> <ul style="list-style-type: none"> • Master planning to improve bike and pedestrian connectivity and reduce vehicle speeds along Hampton Road. • Currently scoping project document to produce a Parking Plan to guide and inform better management, maximum parking rates and parking demand.
<p>South Terrace traffic calming</p>	<p>South Terrace supports an active community, business precinct, and is also an important transport corridor. To create a pedestrian-friendly environment that supports street life the City is proposing some changes to slow traffic and improve the South Terrace streetscape.</p> <p>The City plans to upgrade five intersections between Douro Road and South Street over the coming years. Proposals include a 'slow' speed node with vibrant artwork, footpath widening and upgrades, landscaping improvements, new street furniture and trees.</p> <p>The first node, between Sydney Street and Little Lefroy Lane, was completed in November 2018. It was developed based on traffic analysis, meetings with key stakeholders and community engagement with local residents and businesses. In December 2018 the City's local precinct group held a 'pavement party' as a place activation event to celebrate the new area.</p>
<p>Ride to Work Day</p>	<p>The City celebrated Ride to Work Day on Wednesday 17 October 2018 by hosting a community breakfast at Pioneer Park. In keeping with the One Planet principles the event was catered by two local catering businesses and all stall holders were local small business or community groups. Fremantle Tours offered short walking or riding heritage tours of the West End, while South Beach Cycles and E-Bikers demonstrated their extensive range of bikes and Mercer Cycles offered free bike safety checks for all participants. The Fremantle Bicycle Users Group asked participants for feedback on cycling infrastructure and the City officers were on hand to discuss how to fix the identified issues.</p> <p>Approximately 150 people attended the breakfast in 2018 and it attracted everyone from kids in baby seats on bikes through to road racers. Roughly the same number attended in 2017, up from around 100 in 2016.</p>
<p>FreeWheeling Fremantle</p>	<p>The City encourages residents and visitors to cycle around the City by offering free bicycles for hire. In 2018, the bicycles were hired 228 times, compared to 263 times in 2017. Hire service in both years was disrupted with the move of the Visitor Centre, which may account for the lower numbers. During the shut-down period, customers were referred to other free bike initiatives such as Little Creatures.</p>
<p>EV car charges</p>	<p>Four 22 kilowatt electric vehicle charging points were installed in the new Cappuccino Strip car park. The charging points are compatible with most electric vehicles, with a one hour charge giving between 18-40 kilometres of driving distance depending on the car. There are also two standard 240 volt charging points, which means all current electric cars can be charged up using the appropriate cables. The community may charge their cars for free, however they must pay for parking. The charging stations are four of around 50 charging points found across Perth. Three other public charging stations can be found in the City including two at Queensgate car park (installed and previously owned by the City) and one in White Gum Valley.</p>

ADDITIONAL PROJECTS AND ACTIONS

Bike Week 2018

The City worked in collaboration with the Fremantle BUG and Fremantle Tours to deliver Bike Week activities in 2018. The Light Me Up Ride organised by the Fremantle BUG, had its third anniversary. The ride is used to promote the importance of bike lights and being seen while riding at night. 60 people participated and they were encouraged to decorate their bikes using bright and shiny reusable products from home.

The City offered four free guided bike tours through Fremantle Tours. Fifty-five people participated, the majority being local residents. Participants who registered for these tours were encouraged to use their own bikes but hire bikes and helmets were available if needed. Fremantle Tours offered their regular Fremantle History Tour and took this opportunity to pilot a Fremantle Street Art Tour. The pilot tour was extremely successful and Fremantle Tours are now looking to make this a permanent fixture.

Cycle Sign Straps, which are Australian-made reflective bicycle components made from reused road signs and bicycle tubes, were distributed to participants in Bike Week activities to promote both bike safety and sustainability.



Figure 7 Bike Week

MATERIALS AND PRODUCTS - CORPORATE

Using materials from sustainable sources and promoting products which help people reduce consumption.

The City’s original corporate target from 2015 was “*The City of Fremantle will have a robust process in place for assessing suppliers against local, ethical, social, economic and environmental criteria by end 2016*”. As our internal processes for sustainable procurement were reviewed and updated and we achieved our goal, in the 2017 Annual Report our target was updated to “*The City of Fremantle will implement its sustainable procurement procedure for assessing suppliers against local, ethical, social, economic and environmental criteria and develop a sustainable events policy to minimise the impact of events*”.

In November 2018, Council adopted a Sustainable Events Policy (see Key Project), therefore our target has been updated again to reflect this.

CITY OF FREMANTLE TARGET

Updated target: The City of Fremantle will implement its sustainable procurement procedure for assessing suppliers against relevant sustainability criteria, and it will implement the Sustainable Events Policy to minimise the impact of events. Through the Going Digital project, we will reduce our pages printed by 90% by 2020, based on 2017 levels.

INDICATOR

Proportion of tenders assessed against sustainability criteria.

Disposable coffee cups purchased by staff per day

Amount of paper purchased for printing per year

BASELINE DATA

A sustainable procurement procedure was implemented in 2016, so that all tenders over \$150,000 are assessed on sustainability criteria. Our procurement team review the tenders to ensure that this occurs. The proportion of tenders that contained sustainability criteria prior to this is unknown.

2017 DATA

Disposable coffee cup use in main administration building halved from 86 cups per day to 43 cups per day after a six week campaign, based on roughly 190 people in the office.

All tenders over \$150,000 include a minimum 10% sustainability component. This accounts for 34% of the City’s total expenditure.

A4 paper purchased (FYE 2017): 2765 reams

A3 paper purchased (FYE 2017): 110 reams

2018 DATA

Disposable coffee cup use in main administration building was counted at 22 cups per day, based on roughly 190 people in the office.

All tenders over \$50,000 include a minimum 10% sustainability component. This accounts for 51% of the City’s total expenditure.

A4 paper purchased (FYE 2018): 1430 reams

A3 paper purchased (FYE 2018): 60 reams

KEY PROJECT: SUSTAINABLE EVENTS POLICY

In November 2018, Council adopted a [Sustainable Events Policy](#) that outlines provisions for City run events and for events requiring City approval or receiving City support. The policy excludes the provision, use, distribution or sale of single-use plastics including straws, cutlery, bottles, cups, coffee cups, plates, containers, bags and cling-wrap at all events produced by the City – such as the Fremantle International Street Arts Festival, Carols by Candlelight and One Day in Fremantle.

Single-use plastic straws will also be excluded from events organised by third parties that require

City approval, such as Winterworld, the Long Table Dinner and Falls Festival. Other single-use plastics will not be banned from third party events, but organisers will be encouraged not to use them. Bio-plastics made from 100 per cent plant material that are certified as compostable according to Australian standards will be permitted.

The policy also precludes the use of balloons and confetti, as well as polystyrene and Styrofoam food containers. To encourage the community to move away from bottled water, event organisers must also provide an easily accessible alternative to bottled water which allows patrons to refill their own bottles at no charge.

The policy also includes requirements for providing paired and labelled general waste and recycling bins, restricting promotional materials and decorations to those that can be re-used or recycled, promoting walking, riding and public transport options and providing adequate bike parking at large events.

The Sustainable Events Policy is available on the City's website.

ADDITIONAL PROJECTS AND ACTIONS

ACTION	DESCRIPTION
<p>10% sustainability criteria applied to quotes above \$50,000</p>	<p>In 2016, a sustainable procurement procedure was implemented to ensure that all tenders over \$150,000 were assessed on a minimum of 10% sustainability criteria. In 2016/17, tenders above \$150,000 accounted for 34% of the City's total expenditure.</p> <p>In late 2018, the City's Procurement Policy was reviewed, with one outcome being that all tenders over \$50,000 are to be assessed on a minimum of 10% sustainability criteria. Our procurement team review the tenders to ensure that this occurs. Tenders over \$50,000 currently account for 51% of the City's total expenditure.</p> <p>The specific sustainability criteria considered depends on the service industry. Documents were prepared that outline sustainability considerations for services in parks & gardens, security services, office-based services, electronic equipment, construction, cleaning and electrical, plant and equipment services.</p> <p>Fremantle's current sustainability requirement is exceptional, as at the time of writing no other Local Government Purchasing Policy in WA has a mandated weighting for sustainability.</p>
<p>Going Digital project</p>	<p>The Going Digital project started in late 2017, with the goal to significantly reduce paper reliance, improve productivity and efficiency and allow more flexibility in the workplace. The aim is to reduce the number of pages printed by 90% by 2020, based on 2017 levels. Our One Planet target has been updated to reflect this.</p> <p>In late 2017, all staff were provided with a portable computer device to help reduce their reliance on paper and enable more flexibility. In 2018, the Going Digital Project team reviewed internal processes and activities that generate paper. Findings from December 2018 included:</p> <ul style="list-style-type: none"> • Within a year, our print count reduced from 108,054 to 63,999 pages, which was roughly 44,000 less copies of paper. If laid out, the paper saved would almost reach from Fremantle to Perth (19km). At \$0.019 per A4 page for printing this equals \$836 saved in one year.

ADDITIONAL PROJECTS AND ACTIONS

- Statutory Planning deals with roughly 1000 Development Applications, Subdivisions and enquiries per year. Emailing decisions rather than sending printed copies saved approximately 15,000 - 20,000 pages per year and roughly \$380 in printing.
- Payroll reduced the number of forms from 24 to 14.
- Reduction in offset archiving went from 2142 boxes in 2017 to 820 boxes in 2018.
- From October 2018, Finance started emailing debtor invoices and statements rather than printing, and only provided electronic copies of budget documents.

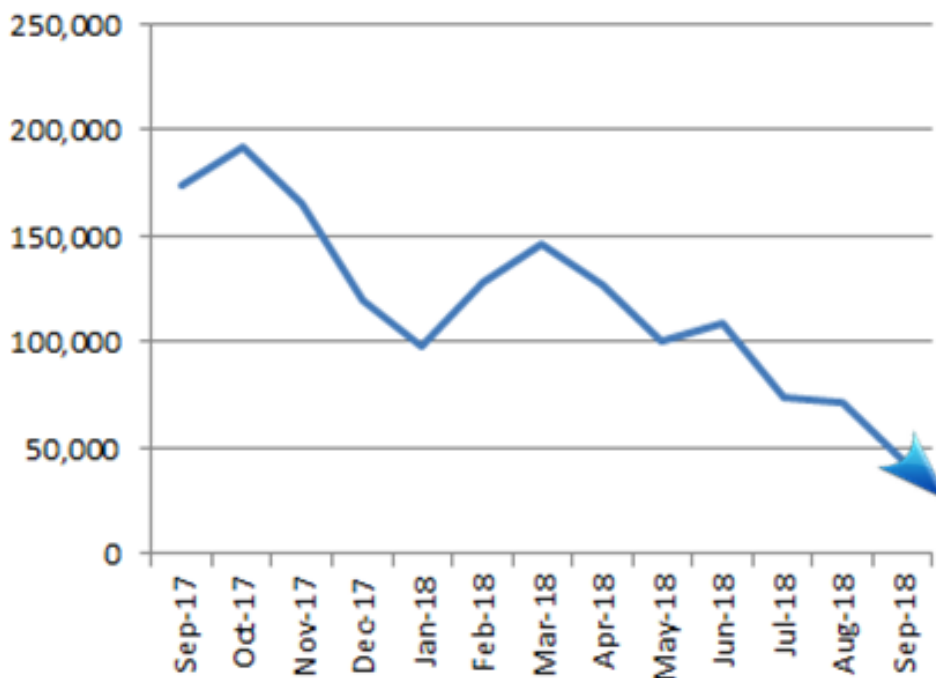


Figure 8: Pages printed at the City from September 2017 to September 2018.

MATERIALS AND PRODUCTS - COMMUNITY

Using materials from sustainable sources and promoting products which help people reduce consumption.

CITY OF FREMANTLE TARGET

The City of Fremantle will encourage and enable the community to achieve high levels of sustainable material use through a range of activities including the opening of a community reuse store at the Fremantle Recycling Centre. The City will continue to promote sustainable building design and offer incentives to development that achieves or extends best practice.

INDICATORS

Community indicators and baseline data have been sourced from a number of initiatives reflecting community attitudes towards using products that help to reduce consumption.

More detailed data will be available in 2019 once community information is available through the One Million Woman app (launched in December 2018).

DATA (see projects for further explanation)

Boomerang Bags: In 2017, 1,166 bags were made increasing to a minimum of 2,045 by end 2018.

Responsible Cafes: In 2015 there were ten Responsible Cafes, increasing to 43 in 2017 and 2018.

Freo Sustainable Home Expo: As part of the Australia-wide Sustainable House Day, a four day expo was held in 2018 with over 3,500 people attended the workshops and events.

KEY PROJECT: SUSTAINABLE HOUSE DAY

As part of the Australia-wide Sustainable House Day 2018, the City supported Renew and the Fremantle Network to deliver a series of informative events and exhibitions during the four day Freo Sustainable Home Expo. The objectives of the project were to:

- To promote sustainable living and showcase innovative housing in Fremantle.
- To put Freo on the map as a hub for sustainability and support Fremantle's economic development, destination marketing and sustainability strategies; and
- Connect the local community and promote sharing of information.

The four day Expo included:

- Grand Designs Freo exhibition which showcased architectural drawings, 3D renders and photos of exceptional homes designed or built for sustainability in and around Fremantle. Around 100 people per day visited the exhibition over the four days.
- One Planet Community Developments. A panel discussion, hosted by ABC TV's Josh Byrne, featured three of Fremantle's One Planet Community developments including White Gum Valley by LandCorp, Evermore by Volk Property and LIV Apartments by Defence Housing Australia. The three companies represent large scale housing developments that have incorporated significant measures to deliver more a sustainable and socially connected developments. The event was attended by nearly 200 people.
- Sustainability show offs! A Pecha Kucha inspired event showcasing 10 local home owners and architects who showcased their sustainable home projects. This event was sold out.
- Sustainable Tradies Meet-up which provided an opportunity for networking with a range of sustainability experts to help tradies with their sustainable projects. 82 people visited the

event over three hours.

In addition to the Expo events, a record 13 homes opened in the City on Sunday 16 September for Sustainable House Day , with an average of 241 visits/house for a total of 3,137 visits on the day.

ADDITIONAL PROJECTS AND ACTIONS

ACTION	DESCRIPTION
<p>Reducing plastic use</p>	<p>The City carried out the following actions to encourage and support our community to reduce their plastic use:</p> <ul style="list-style-type: none"> • Showed two free community screenings of the movie ‘Bag It’ followed by an update from City Officers on our waste and recycling initiatives and a ‘show and tell’ of alternatives to plastic. • Supported the Plastic Free July team in hosting their World Environment Day event, the theme of which was #BeatPlasticPollution. The event was opened by the State Minister for Environment, Stephen Dawson, and celebrated the State Government’s plastic bag ban, which was implemented in July 2018. Fremantle led the fight for a plastic bag ban in WA, and had been pushing for a ban since 2013. The council adopted a plastic bag ban three times since 2013, but it was disallowed in the Legislative Council. • A series of Freo-centric social media messages surrounding Ban the Bag and the Plastic Free July movement. • Free reuseable shopping bags were distributed to residents in the lead up to the Plastic Bag Ban. • Adoption of the Sustainable Events Policy (see Materials and Products – Corporate).
<p>Boomerang Bags</p>	<p>Boomerang Bags is a grassroots, community driven movement tackling plastic pollution at its source. Volunteers make shopping bags out of recycled materials (unused material, curtains etc) that are distributed to the community free of charge. The Fremantle community started up their own Boomerang Bags group in June 2017 and by 2018, 1166 bags had been made. The number currently sits at a minimum of 2045. With the introduction of the WA Plastic Bag Ban in mid-2018, there was a notable shift in consumer behaviour as customers started bringing their own shopping bags. The Fremantle Boomerang Bag group therefore extended their products to include produce bags for fruit and vegetables, and bunting to replace balloons at parties.</p> <p>The City supports the group by holding sewing sessions at the Meeting Place and One Stop Shop on a fortnightly basis, and showcasing Boomerang Bags at relevant City events. Boomerang Bags for staff use are located at all exit/entry points to our Main Administration building.</p>
<p>Responsible Cafes</p>	<p>Responsible Cafes is an Australia-wide initiative where cafes provide a discount to customers that BYO coffee cup. Responsible Cafes was first launched in the City in 2015, with ten cafes signing up. In 2017, City officers engaged cafes and encouraged them to commit to the program. An additional 33 cafes signed up, resulting in a total of 43 Responsible Cafes in Fremantle. In 2018, the number remained at 43 cafes. To find your closest Responsible Café, check out the map at www.responsiblecafes.org</p>

LOCAL AND SUSTAINABLE FOOD - CORPORATE

Choosing low impact, local, seasonal and organic diets and reducing food waste

CITY OF FREMANTLE TARGET

The City of Fremantle will ensure that 100% of food purchased by Council is sourced from local suppliers and includes both healthy and vegetarian options. In line with our Fair Trade City status, only Fair Trade tea and coffee will be purchased for staff. The City will support community actions to increase local and sustainable food purchase and achieve better nutrition.

INDICATOR

Proportion of catering sourced from local businesses.

Continue to monitor food purchasing annually.

Number of healthy food messages internally and externally to the community.

BASELINE DATA

Baseline not required as local and sustainable food purchasing is built in to Fair Trade program and our sustainable procurement procedure.

2017 and 2018 DATA

Fremantle continues to be a recognised Fair Trade City and only fair trade tea and coffee is supplied to staff.

Catering for internal events continues to be sourced from local companies. 100% of catering is sourced from local Fremantle companies, and a vegetarian option is always provided. Organic food is requested for all Councillor meals, and is provided where possible (estimated to be 60% of the time).

Numerous community workshops, talks and information sessions are held through the Curious Program. Coordinators of these events ensure that a selection of healthy food is always available, such as fresh fruit and vegetables, homemade dip and nuts. Food is sourced from local retailers and plastic packaging is avoided where possible.

KEY PROJECT: AUGUST NUTRITION SESSIONS

As part of the City's Health and Wellbeing Program (see Health and Happiness Corporate section), the month of August focused on Nutrition. Staff were invited to attend four workshops that covered nutrition facts and fiction, the basics of nutritional principles, eating well on the go and reading nutritional information panels. Sixty-five staff enrolled in the workshops. For the month of August, staff were also provided with weekly fresh fruit boxes.

ADDITIONAL PROJECTS AND ACTIONS

ACTION	DESCRIPTION
<p>Virgin Pulse Global Challenge</p>	<p>105 staff and 16 teams participated in the Virgin Pulse 100 day Global Challenge. The Challenge included four modules on Activity, Nutrition, Balance and Sleep. As part of the nutrition module, staff could set a weight goal and track their progress, using a food calculator to assist them. The nutrition toolkit contained information on four key themes, including mindful eating, what and when you eat, clearing up confusion and how to</p>

	<p>handle your environment. Daily step averages showed a steady increase over the course of the competition, rising from 11,768 in week one to 13,200 steps in the final week. Feedback from participants was that the competition motivated them to move more through the day.</p>
<p>LGIS Healthy Intel portal</p>	<p>All staff were given access to Healthy Intel, a portal run by LGIS (Local Government Insurance Scheme). The portal provides a personal wellness assessment and information and resources on four modules of Mind, Body, Work and Life. Each module highlights the importance of healthy eating and nutrition in maintaining a healthy body and mind. The portal has a section called 'Cook's Corner' which provides a range of recipes dedicated to healthy eating. Fortnightly emails provide new recipes and articles on a range of topics including lifestyle choices, general wellbeing, weight management, mental health and relationships.</p>

LOCAL AND SUSTAINABLE FOOD - COMMUNITY

Choosing low impact, local, seasonal and organic diets and reducing food waste

CITY OF FREMANTLE TARGET		
<p><i>The City of Fremantle will support community actions to increase local and sustainable food purchase and production, community and edible verge gardening and healthy food choices by providing access to a variety of community gardens, local food markets and local producers - and by promoting and supporting these initiatives.</i></p>		
INDICATOR		
<p>Number of households within walkable catchment of a community garden Number of community actions supported to increase local and sustainable food purchases</p>		
DATA	2017	2018
Number of Community Gardens in Fremantle	3: FERN, Hilton Harvest and WGV	3: FERN, Hilton Harvest and WGV
Number of households within a 400m walkable catchment area to community gardens	3561	3561
Number of healthy eating events (including classes, courses, demonstrations and talks) held through Curious	5: included Little Gourmet (for kids) and Mentally Healthy Diet: Eating for a Healthy Mind	4: including Veggi Chit Chat and 12 Month Food Lovers Club

KEY PROJECT: FOOD SENSATIONS

In 2018, the City hosted a four week program called Food Sensations that was run by Foodbank WA. Food Sensations® assists participants to improve knowledge, attitudes and skills around the preparation of healthy foods with a free hands-on nutrition and cooking experience.

The four week program was attended by 15 people and covered a variety of nutrition topics including:

- Healthy Eating
- Label Reading and Food Selection
- Meal Planning and Budgeting
- Food Safety, Preparation and Cooking

Each session ran for approximately 2.5 hours and included education, activities, cooking and eating delicious food with other participants. Feedback from participants was very positive and the program has been scheduled to run again in 2019.

ADDITIONAL PROJECTS AND ACTIONS

ACTION	DESCRIPTION
<p>Chris Ferreira Presentation</p>	<p>Local celebrity and author Chris Ferreira delivered a talk on his new book 'A Place in the Country' at the Fremantle Library. Chris gave an entertaining and insightful talk on sustainable land management and food production. Chris Ferreira has been a leading exponent of sustainability in Western Australia for over 25 years. His company, The Forever Project, specialises in environmental education and behaviour change, as well as sustainability design, management, community engagement, education and sustainable gardening. Through his award-winning programs, Chris has taught over 130,000 people about sustainable living. An adjunct lecturer in sustainability at Murdoch University, Chris is well known for his Hamilton Hill Sustainable Home project. Twenty people attended the presentation.</p>
<p>Happiness Project</p>	<p>The Happiness Project is a collaboration between ECU Design and the City that has been running since 2014. The project aims at using design and innovative approaches to inject happiness into the City. In recognition of the Local and Sustainable Food principle, in 2018 students were directed to focus their projects on, amongst other topics, the promotion of healthy local food choices. The outcomes are a range of inspiring and innovative ideas that were presented at a public exhibition in Fremantle. Prizes were awarded to the best projects, with third prize being awarded to Tenneil Harris for her Freo Forages app and webpage. The project proposed to have an interactive map that pin points every fruit tree, vegie patch, herb garden, nut tree, etc. in the city, allowing it to be foraged by others.</p>

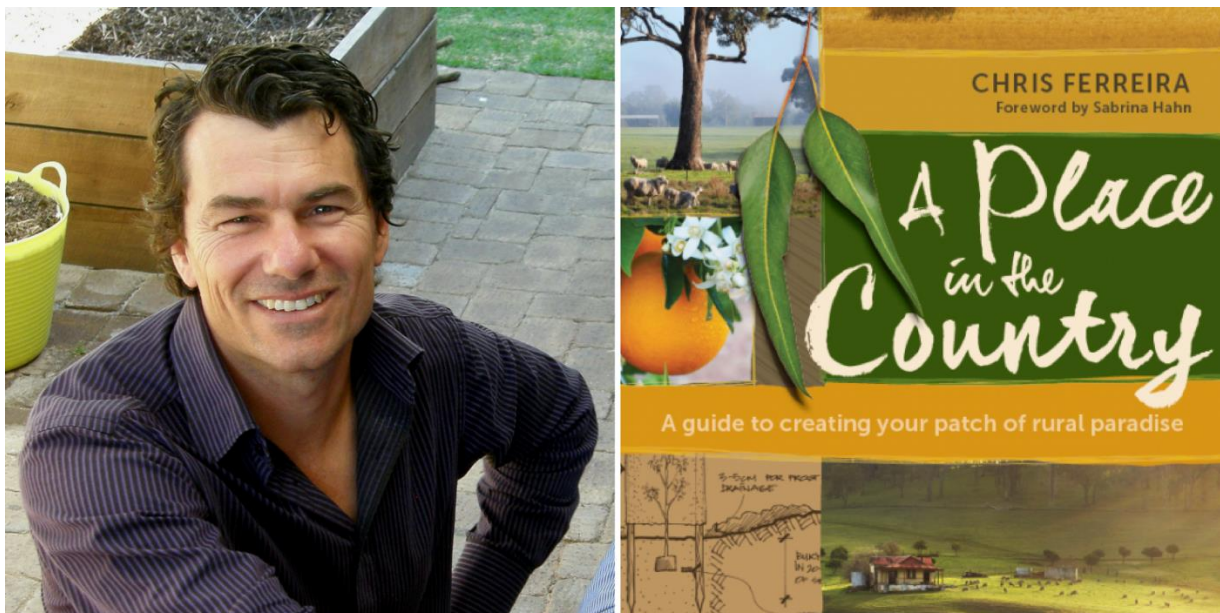


Figure 9: Chris Ferreira: A Place in the Country

SUSTAINABLE WATER - CORPORATE

Using water efficiently, protecting local water resources and reducing flooding and drought

To ensure consistency of data between reports, water use provided below is based on financial year data provided in our Waterwise Council Action Plan and supplied by the Water Corporation.

The results indicate that both groundwater and scheme water use has increased in the last financial year. The findings are due primarily to large water use at the old Council Administration Building. The building was demolished in 2018 and a significant amount of water was used during demolition to prevent the spread of dust and as a part of construction activities. Construction activities will continue into 2019 and the City acknowledges that it may not be possible to reach our 50% reduction target by 2020. Scheme water use will be looked into in more detail in 2019, so that we can understand where our major water use is and where reductions may be achievable.

Groundwater use is currently within our licensed allocation. The Fremantle Golf Course is one of the highest uses of groundwater. As part of the redesign of the Golf Course due to works on Leech Hwy, the City has requested funding from Main Roads to redesign the irrigation at the Golf Course. If it goes ahead, this should assist with reducing groundwater use at the Golf Course.

CITY OF FREMANTLE TARGET			
<i>The City of Fremantle will measure its annual water use and set targets for absolute reduction in line with best practice benchmarks or at least 50% scheme water use and 10% groundwater use against 2010 baseline year levels by 2020.</i>			
INDICATOR			
Scheme water kilolitres used per year. Groundwater kilolitres consumed per year.			
BASELINE DATA (2010)		2020 GOAL	
Scheme: 122,578kL		Scheme: 61,289kL	
Groundwater: 708,500kL		Groundwater: 637,538kL	
CITY OF FREMANTLE CORPORATE DATA			
	2015/16	2016/17	2017/18
Scheme (kL)	120,004	128,470	136,519
Groundwater (kL)	683,025	664,946	708,375
TOP FIVE SCHEME WATER USES			
	2016/17	2017/18	Comment
South Beach Park & Change Rooms	5,420	11,862	Construction of a new basketball court with large usage. 1L/min leak found.
Town Hill & Admin Centre (8 William St)	8,658	10,029	Construction on site which has used significant quantities of water. This is a temporary increase expected to reduce.
Fremantle Arts Centre	6,026	6,643	Major water leak found in 2018 and repaired.
Apace Nursery	5,143	6,176	Controlled by lessee.
Gilbert Fraser Reserve	5,079	5,317	To be further investigated in 2019 – believed to be due to a system used to dilute the

			salinity of bore water which has been using too much mains water	
TOP FIVE GROUNDWATER USES				
	2015/16	2016/17	2017/18	% of total
Fremantle Golf Course	157,972	155,841	142,993	22.37%
Memorial Reserve	38,697	39,070	43,177	6.75%
Dick Lawrence Oval	43,961	48,056	39,210	6.13%
Stevens Reserve	30,199	25,742	33,219	5.20%
Fremantle Oval	35,329	36,571	29,065	4.55%

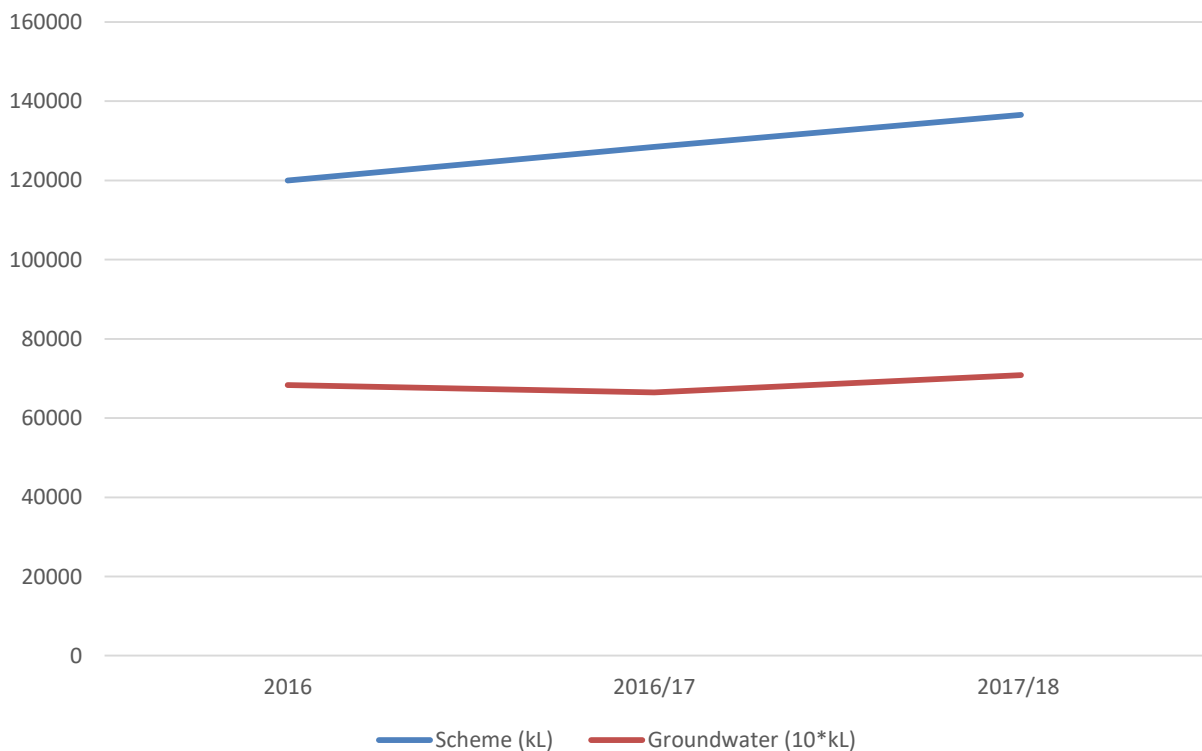


Figure 10 Scheme and Groundwater consumption from FYE 2016 to FYE 2018

KEY PROJECT: LEAK DETECTION

In 2018, data loggers were used at two major sites to detect leaks. One was used to investigate the increase in water use at the South Beach amenities building. A 1L/minute leak was identified and contractor was appointed to fix the leak. Loggers have also been installed at the Fremantle Depot to detect a leak of 5L/minute. Works are currently underway to identify the cause and repair the leak. A major leak of 18L/minute that went undetected for two months, was also identified and fixed for a leased site at Esplanade Park.

ADDITIONAL PROJECTS AND ACTIONS

ACTION	DESCRIPTION
Maintenance of Waterwise Status	<p>The Waterwise Council Program is a partnership between Water Corporation and the Department of Water and Environmental Regulation. The Program supports and encourages councils in their continuous improvement across the water cycle and adoption of water sensitive principles.</p> <p>The City's Leisure Centre has been accredited as Waterwise since 2016 and in 2017, the City became an accredited Waterwise Council. As part of this accreditation, the City was required to prepare a Waterwise Council Action Plan that details our key actions for the future. In order to maintain our Waterwise status, an annual report (both for the Leisure Centre and the City) must be prepared that demonstrates activities undertaken to improve and maintain our water efficiency, and updated goals for the future.</p>
Water efficient maintenance practices	<p>Continued water efficient maintenance practices for general operation included:</p> <ul style="list-style-type: none"> • Meters for reticulation are read monthly by Parks and Landscape. • Water use at all City owned facilities are monitored monthly by the City Assets team. Increases in water use are identified, reported and investigated to determine source (increased use, leaks etc) and addressed. • All City owned facilities are regularly inspected and reported as part of the asset management program and include maintenance and replacement of water fixtures. • Turf renovation program consisting of scarifying, coring and deep slicing. • Applications of wetting agent. • Constant monitoring and adjustment to turf mowing height. • Soil profile amendments and deep penetrating irrigation cycles to entice deeper turf root development. • Ongoing program of replacing existing irrigation controllers with cloud based control systems. • Installation of soil moisture sensors in turf areas. • Hydrozoning of irrigation to focus on priority areas.
Establishment of Monthly Working Group	<p>In 2018, a cross functional working group was established to discuss and monitor progress on the City's sustainability action plans, including the Waterwise Council Action Plan, Greening Fremantle Strategy 2020, Urban Forest Plan, Energy Management Plan, Waste Management Strategy and One Planet Strategy. The working group includes members from Strategic Planning (Sustainability and Strategy) and Infrastructure and Project Delivery (Sustainability, Assets/Facilities and Waste Management). The group meets once every two months.</p>

SUSTAINABLE WATER - COMMUNITY

Using water efficiently, protecting local water resources and reducing flooding and drought

Similar to our corporate information, our community water use provided below is based on financial year data provided in our Waterwise Council Action Plan and supplied by the Water Corporation. Our Waterwise Council Action Plan details key actions for the future in relation to our community targets. Data to date shows that our target of a 10% per capita reduction in water use from 2010 levels has been achieved ahead of schedule. Water levels dropped 23.5% from 423 L/person/day in 2010 to 323 L/person/day in 2016/17; however they rose again slightly to 328 L/person/day in 2017/18. Our community water data includes water use from both residential and industry (ie. Hospitality/construction) uses, so actual water use per capita is likely to be slightly lower. Residential water use accounts for roughly 75% of total usage.

CITY OF FREMANTLE TARGET

The City of Fremantle will encourage and enable the community to achieve a 10% per capita reduction in potable water use by 2020 from a 2010 baseline level.

INDICATORS

Scheme water kilolitres used per year
Scheme water kilolitres used per capita per year

BASELINE DATA (2010)

2020 GOAL

4,100,000 kL	138.6kL per person per year
154kL per person per year	381 L per person per day
423 L per person per day	
Population 26,582 ¹²	

CITY OF FREMANTLE COMMUNITY DATA

DATA	2015/16	2016/17	2017/18
kL/year	3,899,885 kL	3,718,948 kL	3,888,065
kL/person/year	127.5 kL	117.8 kL	119.7 kL
L/person/day	349 L	323 L	328 L
Population	30,572	31,568	32,482

KEY PROJECT: WATERWISE GARDEN WORKSHOPS

A number of workshops were held throughout 2018, so that residents could learn about the most suitable plants for a Waterwise garden and how to prepare and maintain your verge garden. Free workshops included the Verge Open Day at the City's Recycling Centre in May 2018 and a Verge Garden workshop and walking tour in October 2018. City officers also manned information stalls at various community events providing advice on waterwise plants and the City's Verge Beautification Guidelines. A total of 5,230 discounted or free waterwise plant seedlings were also distributed to residents throughout the year to residents through community engagement sessions, schools, friends groups and the City's Native Plant Subsidy Scheme.

¹²http://www.censusdata.abs.gov.au/census_services/getproduct/census/2011/quickstat/LGA53430?opendocument&navpos=220



Figure 11: Waterwise Garden workshops

ADDITIONAL PROJECTS AND ACTIONS	
ACTION	DESCRIPTION
Support for RENEW Nexus	<p>The RENEW Nexus project is managed by Curtin University and supported by the Australian Government through the Smart Cities and Suburbs Program. The project includes a number of partners, including the Water Corporation and City. The RENEW Nexus project will assess, in the City, how cities of the future can use combined data and blockchain technology to integrate distributed energy and water systems infrastructure. City residents who have alternative water systems (eg. Rainwater tanks or greywater systems) were invited to participate in the trial, with 31 households signing up to participate. Project participants were supplied with a remotely read metering device and provided access to a web platform enabling them to view their live water usage data. The secure data that is collected will inform research conducted by Curtin University and Murdoch University scientists that will support and inform WA’s transition to a new water and energy network. The findings will be available in late 2019.</p> <p>Information on the renewable energy side of the RENEW Nexus project can be found in the Zero Carbon Community section.</p>
Living Smart workshop	<p>The City sponsors Living Smart to run sustainability workshops at discounted prices for residents. The workshops run over seven consecutive weeks, and teach participants how to be more sustainable in their own home. Two Living Smart courses were run in 2018, with both courses exploring the topics of water efficiency in the home and waterwise gardening. Forty-six people attended the two courses, with 76% of participants from the May/June course indicating that they had reduced their water use as a result the course.</p>

LAND AND NATURE - CORPORATE

Protecting and restoring land for the benefit of people and wildlife

The City's actions under our Land and Nature target are heavily directed by our [Greening Fremantle: Strategy 2020](#) (previously the *Green Plan 2020*) and our newly published [Urban Forest Plan](#). These documents can be found on the City's website. Baseline data was sourced from aerial mapping that was undertaken for the Strategy and Plan. Due to financial constraints, it is not possible to carry out aerial mapping on an annual basis, therefore similar statistics are not available for 2017 and 2018. Aerial mapping will be carried out again in 2020.

CITY OF FREMANTLE TARGET

The City of Fremantle will contribute to increasing levels of biodiversity and space for wildlife through measures carried out on local government owned properties or through time or financial support to an appropriate conservation groups or community initiatives.

INDICATORS*

Increase in tree canopy cover.

Maintain and increase public open space to ensure at least the minimum of 3.6 hectares of public open space per 1000 residents is provided¹³.

Every worker and resident is within a 400m walkable distance from functional open space.

Maintain and increase where possible, support for planting/biodiversity programs.

BASELINE DATA (2015/16)

13% Canopy Coverage

23% Green Area

13,629 Trees

Public Open Space provision = 3.5 Ha per 1000 residents

Walkable catchment gaps exist in Hilton, O'Connor, White Gum Valley, Beaconsfield and North Fremantle.

2017 DATA

Walkable catchment gaps in White Gum Valley, Beaconsfield and North Fremantle

In 2017, the City planted approximately 500 trees in streets and reserves and 1000 trees in natural areas. There was a great increase in community coastal planting through the Perth NRM Coastcare program. Ten community and school planting events were held across Leighton Beach, South Beach, Port Beach and Bathers Beach. 188 volunteers took part and planted over 3000 native plants.

2018 DATA

Walkable catchment gaps exist in Beaconsfield and North Fremantle.

In 2018, 31 community planting days were carried out across Leighton Beach, South Beach, Port Beach, Bathers Beach, North Fremantle Swan River Foreshore, Prawn Bay, Samson Park and Cantonment Hill. These planting days include schools, Conservation Volunteers Australia, Work for the Dole teams, local community "Friends of" groups and the City staff planting day. A total of 12,000 native local species (plants and trees) were planted.

In FYE 2018, the City planted 714 trees on residential verges and in local parks, and another 92 trees as part of City projects like pocket parks, car parks and walkways. The species of trees planted included red flowering gums, bottlebrushes, jacarandas and tuart trees, with the varieties carefully

¹³The State Planning Policy standard is 3.36 hectares of public open space per 1000 residents

chosen to best suit the local conditions and surroundings.

The number of free seedlings distributed totalled 5,230 plants. These were distributed to residents (4,200), attendees at the Garage Sale Trail (120) and community engagement for WGV pocket park (120), schools (350) and the Friends of Hollis Park group (440).

Eight residential verges were prepared for planting by the City as part of the Verge Garden Incentives Program (see Land and Nature Community section for further description).

* The City and the community are intrinsically linked with land use and wildlife, as they both manage land and wildlife doesn't differentiate between public and private land. Therefore, our indicators and baseline data are the same for our Corporate and Community targets.

KEY PROJECT: INTERNATIONAL BIOPHILIC CITIES NETWORK

In January 2018, Fremantle was the first Australian city to join the international Biophilic Cities Network. A biophilic city is one that contains abundant biodiversity and nature, which works to conserve and enhance that nature, and provides its residents with opportunities to learn about and connect with the natural environment.

To become a Partner City, the City committed to monitoring the five indicators listed below that directly align with our existing *Greening Fremantle: Strategy 2020* and *Urban Forest Plan*.

1. Progressively increase tree planting across the city to achieve at least 20% canopy coverage.
2. Increase the percentage of city population living (or working) within 400 metres of a public open space, green space, park or other natural element.
3. Achieve annual progress on the goals outlined in the City's *Greening Fremantle: Strategy 2020* and the *Urban Forest Plan*.
4. Increase tree planting in residential areas that are mapped as above the baseline temperature average (based on thermal imaging from 2015), to ensure equitable distribution of green infrastructure.
5. Deliver informative communications when key milestones for the *Greening Fremantle: Strategy 2020* and *Urban Forest Plan* are met, to ensure the community and key stakeholders are fully informed.

In June 2018, Biophilic Cities Perth and the City held a celebration that was attended by 36 people. Tim Beatley from the University of Virginia and founder of Biophilic Cities joined the event via a short video presentation, followed by a presentation from Jana Soderlund from the Perth Biophilic Cities Group and presentation of the City's International Biophilic Cities Network certificate.

ADDITIONAL PROJECTS AND ACTIONS

ACTION	DESCRIPTION
Coastal Adaptation Monitoring	<p>The City was successful in attracting Coastal Adaptation and Protection Grant funding through the Department of Transport in 2018, for two separate but complimentary projects. These projects progress recommendations made in the Port Leighton and Mosman Beaches Coastal Adaptation Plan that was adopted by Council in November 2017.</p> <ul style="list-style-type: none"> • <i>Port Beach asset condition assessment, analysis and development of management / maintenance program.</i> Partnership project with Fremantle Ports and Department of Transport to recommend an appropriate coastal adaptation response to the extreme erosion risk identified in the 2017 PLM CHRMAP. The work will include an assessment of the current condition of existing seawalls, an

ADDITIONAL PROJECTS AND ACTIONS

	<p>investigation of the influence of existing seawalls on the coastal processes affecting Port Beach, and recommendations for a coastal adaptation response to address the erosion risk. The project is expected to be completed in 2019.</p> <ul style="list-style-type: none"> • <i>Port, Leighton and Mosman beaches coastal monitoring program establishment and year one data collection.</i> <p>Partnership project with the Town of Mosman Park, Fremantle Ports and Department of Transport and consulting with Town of Cottesloe. The work will result in a coastal monitoring program that can be implemented over a number of years, pending available funding and budget. The data will be used to monitor the risk levels with reference to the 2017 PLM CHRMAP. The project is expected to be completed in 2019 and continued pending funding and budget availability.</p>
<p>Perth NRM Coastal and Marine Program</p>	<p>In 2018 the City continued its long standing arrangement with Perth NRM participating in their Coast and Marine Program. The program provides a coastal facilitator who works across four neighbouring coastal councils to support the sustainable management of and facilitate community engagement in caring for the coastal environment. In collaboration with Conservation Volunteers Australia, the annual coastal community planting day was held in June and Woodside Coastal Guardians supported dune restoration works at Leighton Beach. The Fremantle Primary School Adopt-a-Plot at South Beach and the John Curtin College of Arts Roots and Shoots program at Port Beach continued with planting days and awareness raising activities. Ongoing support was provided to Friends of Fremantle Beaches for their dune conservation projects at South Beach and Leighton Beach.</p>
<p>Myer Foundation funded “Friends Groups” capacity building project</p>	<p>Through the South West Group NRM group, the City has partnered with Cities of Melville and Canning and Town of Mosman Park to secure grant funding to deliver an environmental community capacity building project. The project will deliver a range of activities including a Friends Group expo, a series of training and capacity building workshops delivered by such organisations as WACOSS, Volunteering WA, Conservation Skills Australia and Perth NRM, tailored assistance to interested groups through SERCUL, and a coordinated, regional marketing campaign to assist in recruiting volunteers.</p>
<p>Alternatives to chemical pesticides</p>	<p>The City uses an integrated weed and pest management program which aims to reduce the use of chemicals. This includes steam weeding, mechanical weed control and low toxicity chemicals combined with traditional treatments where appropriate. The steam weeding program was expanded for 2018 to include playgrounds and increase the number of yearly treatments in the suburban areas.</p>
<p>Revegetation Plan Rocky Bay Reserve, Cypress Hill and Prawn Bay North Fremantle</p>	<p>Following the adoption of relevant management plans to reduce bushfire risk, the revegetation of Rocky Bay Reserve, Cypress Hill and Prawn Bay commenced. In 2018, 5750 local native plants from 29 different species were planted with the aim of reinstating species richness of the natural vegetation while maintain a reduced bushfire hazard risk. Photo-monitoring and vegetation monitoring sites have been established in the reserves to monitor vegetation and inform ongoing revegetation works. The program will continue in 2019.</p>



Figure 12 Perth Biophilic Cities Group with Mayor Brad Pettit



Figure 13 CVA Woodside Coastal Guardians dune restoration work at Leighton Beach

LAND AND NATURE - COMMUNITY

Protecting and restoring land for the benefit of people and wildlife

The City's original community target for Land and Nature has been updated to reflect the renaming of the Green Plan to Greening Fremantle: Strategy 2020 and a review of the canopy cover target to better reflect the intent to work towards 20% coverage by 2020. The old wording suggested that we would achieve 20% canopy coverage by 2020, however given the time it takes for canopy to grow, this was not feasible. The target below also reflects the completion of the Urban Forest Plan in 2017

CITY OF FREMANTLE TARGET

The City of Fremantle will contribute to increasing levels of biodiversity and space for wildlife through their own strategies, guidelines and practices. The City of Fremantle will progressively increase tree planting across the city to achieve a minimum 20% canopy coverage. The City will deliver the outcomes of the Greening Fremantle: Strategy 2020 and Urban Forest Plan.

INDICATORS, BASELINE DATA AND 2017 DATA *

Refer to Land and Nature – Corporate

* The City and the community are intrinsically linked with land use and wildlife, as they both manage land and wildlife doesn't differentiate between public and private land. Therefore, our indicators and baseline data are the same for our Corporate and Community targets.

KEY PROJECT: GREENING SAMSON PROJECT

The Urban Forest Plan adopted by council in 2017 sets a target of increasing the number of trees in Fremantle from 13,000 to 23,000 by 2027. Mapping undertaken for the Urban Forest Plan identified that Samson had some of the lowest Canopy coverage in the City, and that on average Samson is two degrees hotter than nearby suburbs. To combat the heat island effect and help fill gaps in the biodiversity corridor that runs through the area, Samson was identified as a high priority area for the City's tree planting program.

Additional funding was provided in the City's 2017/18 budget to increase the number of trees planted across the City from 500 to 900. As part of the Greening Samson initiative, 212 of these trees were planted on verges in Samson in May 2018. Samson residents were provided with a free street tree that was carefully selected based on existing planting in the particular street, proximity to bushland, power lines and foot paths. Residents were also given the opportunity to choose the type of street tree they had planted on their verge, and to opt out. The City planted, watered and will continue to maintain the trees at no cost to residents.

As part of the Greening Samson project, a community engagement and educational event was held at Sir Frederick Samson Park in May 2018. The event included:

- Free hands-on activities such as revegetation planting in Samson Park bushland, Buster the Fun Bus and children's activities
- Expert advice on greening your property and information on the Greening Samson project
- Free native plant giveaways
- Samson Primary P&C cake stall and fundraising
- News on the Samson playground renewal
- 'Let's Talk Rubbish!' City officers provided helpful information on the City's Recycling Centre, FOGO and the State Government plastic bag ban. A collection point for household batteries, car batteries, fluorescent lights, mobile phones and ink cartridges was also provided.



Figure 14: Greening Samson Project



Figure 15: White Gum Valley Pocket Park

ADDITIONAL PROJECTS AND ACTIONS

ACTION	DESCRIPTION
Implementation of the Verge Garden Incentive Program	<p>As part of the City’s Verge Garden Incentive Program, the City ran a Verge Preparation Assistance Scheme in April/May 2018, enabling residents to apply for verge garden assistance. Eight residents had their verges prepared for planting, which included boxing out of verges to up to 200 mm deep, disposal of soil, weeds and leaf litter and spreading of mulch. Residents were responsible for the purchase and planting of seedlings, but were able to purchase up to 40 native plants at discounted prices from APACE nursery during the month of May, as part of the City’s Native Plant Subsidy Scheme. The City also ran a Verge Open Day at the City’s Recycling Centre in May 2018 to provide residents with tips and information on how to prepare and maintain your verge. There were planting demonstrations and plant giveaways throughout the day.</p> <p>In addition, a Verge Garden workshop and walking tour was held by Greening Australia in October 2018 at The Meeting Place. Twenty-one people attended the workshop, which included presentations on local birds and their habitat, a look at garden designs and examples of plants to use.</p>
White Gum Valley Pocket Park	<p>Following community consultation on an appropriate location, a pocket park with seating and a children’s play space was created in White Gum Valley. The development of the space aimed to increase the amount of functional open space for the community and address the walkable catchment gaps in the area.</p>
Cat owner education and awareness program	<p>Through its participation in the South West Group NRM group, the City has partnered with the Cities of Kwinana, Canning, Melville, Cockburn and Town of East Fremantle to secure a State NRM Community Action Grant to deliver a cat owner education and awareness program. It incorporates information obtained through the National Cat Tracker Project with the aim of reducing the impact that domestic and stray cats have on native fauna in urban and peri-urban areas by encouraging cat owners to confine their cats to their homes’ boundary. Some setbacks have occurred with the suitability of the cat tracking collars for the cat tracking component of the project. A modified program in consultation with Murdoch University focussing on cat owner attitudes and cat containment will be delivered in 2019.</p>
Reducing Fox Predation of Native Fauna by Better Targeting Trapping	<p>Through its participation in the South West Group NRM group, the City has partnered with the Cities of Kwinana, Rockingham, Canning, Melville, Cockburn and Town of East Fremantle to secure a State NRM Community Action Grant to implement a fox tracking program to better understand fox movement in urban and peri-urban areas. The information collected will support better targeted fox control programs across the local government areas. Tracking via radio-tracking collars is anticipated to commence in early 2019.</p>

CULTURE AND COMMUNITY - CORPORATE

Nurturing local identity and heritage, empowering communities and promoting a culture of sustainability

CITY OF FREMANTLE TARGET

The City of Fremantle will promote an understanding of the One Planet Council program with its staff and commit to supporting community projects and targets based on increasing the number of community and / or sustainability projects and / or the level of support (financial or staff time) by 2020.

INDICATOR

High level of commitment to supporting arts, culture and festivals, sustainability practice and lifelong learning opportunities across a range of community facilities.

BASELINE DATA (2017)

A calendar of activities including ongoing classes and programs or one off events and workshops are run through the Lifelong Learning program. A selection of activities held in 2017 include:

- Street x Street: Turning Neighbourhoods into Communities (10 attendees)
- The Garden Party Collective (15 attendees)
- White Gum Valley: High Density Living and Sustainability (10 attendees)
- Sustainable Walk (10 attendees)
- Small and Diverse House Bike Tour (20 attendees)
- Different ways of Living Tiny: Exploring Small & Diverse Houses in Fremantle (75 attendees)
- Playgroup time for Grandparents (average of 12 attendees per week)
- South Fremantle Playgroup (average of 12 attendees per week)

2018 DATA

A selection of ongoing programs and one off workshops held through the Lifelong Learning Program in 2018 are listed below. The majority of programs are attended by 15-30 people.

- | | |
|---|--|
| • Who wouldn't want to be Living Smart? | • Bookmaking |
| • Makerspace: Sustainable Christmas | • I Spy Quilts |
| • Bag It – community film screening | • Veggi Chit Chat |
| • One Planet Fremantle | • French Conversation |
| • A Place in the Country – talk with sustainability guru Chris Ferreira | • Tuesday Morning Walkers |
| • The Coal Truth – author talk with Greenpeace CEO David Ritter | • 12 Month Food Lovers Club |
| • Create a Verge Garden | • Italian Conversation |
| • Bees Wax Wrap Workshop | • Cosy Quilters |
| • Women Poets in Australia | • Boomerang Bags |
| • Ukulele in the Parlour | • Italian & French Language |
| • Nyoongar Language | • Express Yourself – creativity class |
| • The Beta Reader Book Club | • Pathway to Happiness course |
| • Shut Up and Write! Writers Group | • Visual Journey Course |
| | • Monday, Tuesday, Wednesday Book Club |

KEY PROJECT: STARS LAUNCH

Following staff feedback and a review of our existing rewards and recognition program in 2017, the City introduced Successes, Triumphs, Awards and Recognition Scheme (STARS) – an electronic reward and recognition program. STARS was voted by our staff as an easier, more engaging way to say thank you and nominate deserving team members for an award, and it also aligned to our going digital objective. Through the STARS platform, staff can send and receive thank you or recognition cards, individuals or teams can be nominated by a manager for their exceptional efforts and/or for living our four culture principles. Nominations are reviewed by a panel every two months to receive a prize. Since its launch in September 2018, 1,400 eCards have been sent, 12 awards have been issued, and we have had 74% active engagement with the system.

ADDITIONAL PROJECTS AND ACTIONS

ACTION	DESCRIPTION
Community Safety and Crime Prevention Plan 2019-2023	The City is in the process of preparing a Community Safety and Crime Prevention Plan that will set out clear timelines, targets and responsibilities based on stakeholder and community engagement and statistics. The development, implementation and review of the Plan will be overseen by the Community Safety Reference Group (CSRG), which includes the WA Police and CoF staff and elected members.
One Planet staff tree planting day	Twenty staff attended the One Planet tree planting day and planted 220 coastal dune species on Bathers Beach. This location was first rehabilitated last year, and infill planting was done this year, trialling a new plant guard made of hessian rather than plastic.
One Planet Community and Local Government Presentations	During 2018, Councillors and Local Government officers presented at a number of community events and Local Government workshops, specifically on Fremantle's One Planet Strategy and the associated projects. Some of the presentations included: <ul style="list-style-type: none">• Community presentation by the Mayor and two Sustainability officers in May (attended by 20 people)• Officer presentation in November at WALGA Local Government Forum on Embedding Sustainability (attended by 80 people)• Officer presentation at two Living Smart workshops (May and November) on Fremantle's One Planet Strategy (total of 52 people).• Officer presentation at Tuart Place community centre in September on how to live more sustainably (attended by 25 people)• Officer presentation in July at WALGA Local Government Forum on Reducing Plastic Use (attended by 60 people)

CULTURE AND COMMUNITY - COMMUNITY

Nurturing local identity and heritage, empowering communities and promoting a culture of sustainability

CITY OF FREMANTLE TARGET

The City of Fremantle will promote an understanding of the One Planet Council program with the community and commit to enabling at least 3000 people per year to engage in one planet related activities (10% of population) - including community and cultural events.

INDICATOR

High level of commitment to supporting arts, culture and festivals, sustainability practice and lifelong learning opportunities across a range of community facilities.

Engagement with the community (MySay Freo visitors)

DATA	2017	2018
Fremantle International Street Arts Festival ¹⁴	150,000 people	80,000 people
Fremantle Festival ¹⁵	35,000 people	15,000 people
One Day in Fremantle	15,000 people	15,000 people
Heritage Festival	3000 people	2000 people
Hidden Treasures	4500 people	4000 people
Living Smart Workshops	55 people	46 people
One Stop Shop	38 people/day	28 people/day
My Say Freo (2016 benchmark of 13,600)	22,000 visits	32,600 visits

KEY PROJECT: COMMUNITY ENGAGEMENT AND MYSAY FREO

The City recognises that our community is a source of knowledge and expertise and this can be harnessed to help find solutions to local topics as well as complex city challenges. Community engagement is a key part of our commitment to be a transparent and responsive organisation. Our objective is to make better decisions by bringing community and stakeholder voices into the issues that are important to them and to lead a culture which respects and welcomes community input.

In 2015 the City launched the My Say Freo online engagement site, leading the way for local government in WA. The My Say Freo ethos is “don’t let your voice go unheard” and it provides an accessible central hub for information on projects as well as complementing face-to-face engagement opportunities. In 2018 visitation reached 33,000 people, nearly 2.5 times 2016 visitation of 13,600. The introduction of registration and a monthly newsletter has also increased participation between projects, encouraging people to return and growing the online community.

The City has made steady progress involving wider voices in engagement. Recognising that genuine opportunities for children to engage on topics that may impact them were not always available, the City has focused on this area. The guiding principle was Article 12 in the United Nations Convention of the Right of the Child: “*Children have the right to say what they think should happen when adults are making decisions that affect them and to have their opinions*

¹⁴ In 2017, WiFi logins were used to measure attendance. In 2018, Metrix Consulting Sydney did intervention surveys and phone calls to measure numbers. Staff indicated that based on observations, similar numbers attended both years and they attributed the difference in numbers to the different methodologies.

¹⁵ Fremantle Festival was held over ten days in 2017 and three days in 2018, accounting for the difference in attendees. In 2019 the Festival will be held in winter for the first time and will be back to ten days.

taken into account.”

Specifically in 2018 children have been directly involved in the design of a pocket park, two park renewals and the planning for new public open space. Tailored information is developed for children’s engagement and the projects used a mix of school presentations, hands-on modelling or construction activities and drawing. In each case children have been kept up to date on how their input was used and three of the projects are now complete. Evaluation on one project showed all 24 students enjoyed working on the design, that they found it fun and that they ‘liked the City including kids in the making’. The students also thanked the City for making the park better.

ADDITIONAL PROJECTS AND ACTIONS

ACTION	DESCRIPTION
<p>LivingSmart workshops</p>	<p>To promote a culture of sustainability in our community, the City sponsors Living Smart to run sustainability workshops at discounted prices for residents. The workshops run for one night over seven consecutive weeks, and in line with the One Planet principles they cover topics such as energy efficiency and carbon emissions, water sustainability, waste and recycling, living simply, making chemical-free household and personal products, gardening for biodiversity and creating compost. The workshops enable participants to meet other like-minded community members and discover practical ways to live a healthier lifestyle and live more gently on the planet. Across the two courses, 46 people attended. Following the May/June course, a survey of participants indicated that:</p> <ul style="list-style-type: none"> • 76% of participants had reduced their water use • 65% had improved their energy efficiency and 6% were making plans to change • 94% reported making changes to reduce waste with 6% making plans to change • 59% said they had shifted one or more regular car trips to another mode with 29% intending to do so.
<p>Positive Ageing Program</p>	<p>In 2018, the City was recognised for its efforts to become an age-friendly city by taking out the Age Friendly Local Government category at the 2018 WA Seniors Awards.</p> <p>The award reflects the City’s efforts to promote health and well-being within the over 55’s community through the Positive Ageing Program. The Positive Ageing officer works with local facilitators, community organisations, sports clubs and volunteers to offer free short ‘taster’ workshops, activities and presentations. The objective is to allow older people to connect with their peers and to lower the risk of social isolation. An average of 28 people per day (48% males, 52% females) attended the One Stop Shop in 2018. The number of people attending has decreased compared to 2017, which can be attributed to the temporary move from King’s Square to Fremantle Oval, which is a quieter location.</p> <p>In 2018, 45 activities were run including 15 wellbeing, 10 recreational, 5 cultural, 12 craft and 3 technological activities. Other events included:</p> <ul style="list-style-type: none"> • Garden Party Collective (activating micro communities): 25 older seniors attended ‘upskilling’ workshops. • Dance Hall Days: Roughly 70 people attended monthly dances, including

ADDITIONAL PROJECTS AND ACTIONS

	<p>a lesson, live band and refreshments. .</p> <ul style="list-style-type: none"> • Healthy Lifestyles Expo for over 55s: 60 stalls from local service providers, not for profit organisations and community groups provided information. Approx. 500 people attended. • Memory Café: Monthly catch up at a South Beach café for people living with dementia, family and friends. Approx. 15 people attend. • Between Wind and Water: Theatre production relaying stories from older people connected to Fremantle. 725 people attended and 20 actors & community performers were involved. • Seniors Week events: The highlight was Walyalup Kannajil, a celebration of community stories and singing in Nyoongar and English. Approx. 70 people of all backgrounds and abilities attended. • White Cane Day: Walking tour exploring Fremantle. Twenty people attended, including 10 with low vision or blind and four guide dogs.
<p>State Arts and Culture Partnership Honours</p>	<p>The City's commitment to the arts was recognised at the second annual State Arts and Culture Partnership Honours.</p> <p>The City was recognised in the Metropolitan Local Government category for its partnership with local arts and health organisation DADAA. DADAA is a leading arts and health organisation that creates access to cultural activities for people with disability or a mental illness. The City invested \$2 million to restore and renovate Fremantle's historic Old Boys School, and granted DADAA a 21-year lease to create a contemporary and central arts and disability hub.</p>
<p>Aboriginal Cultural Centres</p>	<p>To learn about Nyoongar culture, the Walyalup Aboriginal Cultural Centre runs a program of craft, art and language workshops in alignment with the traditional six Nyoongar seasons.</p> <p>A feasibility study into a new Nyoongar Cultural Centre in Fremantle began in 2018, with a consultant (Sandra Harben) appointed to engage with the Aboriginal community and to lead the creative and visioning process. Several sites are currently being discussed as potential options for the new centre.</p>
<p>Reconciliation Action Plan (RAP)</p>	<p>The City is committed to developing and implementing a Stretch Reconciliation Action Plan, a third tier RAP that includes all of Reconciliation Australia's minimum elements for endorsement and aims to help the workplace facilitate understanding, promote meaningful engagement, increase equality and develop sustainable employment and business opportunities. The RAP working group was formed in 2018 and development of the plan will continue through 2019.</p>



Figure 16 Aboriginal Elders attending the first Reconciliation Action Plan meeting.



Figure 17 Dancing Days

EQUITY AND LOCAL ECONOMY - CORPORATE

Creating safe, equitable places to live and work which support local prosperity and international fair trade

CITY OF FREMANTLE TARGET

The City of Fremantle will provide a full package of support, training and engagement mechanisms to foster staff development by 2020 and to support equality in the workplace.

INDICATOR

Number of people nominated and awarded as part of the Reward and Recognition Program/STARS Program

Fair Trade Status maintained

BASELINE DATA (2017)

In 2017, 87 people were nominated and 57 people won an award as part for Reward and Recognition Program.

Fremantle recognised as a Fair Trade City

2018 DATA

In 2018, a review of the existing Rewards and Recognition program was undertaken and no nominations were made during this time. In September 2018, the new Successes, Triumphs, Awards, and Recognition Scheme (STARS) was launched (see Culture and Community Corporate section for details). From September to December 2018, 12 awards were issued, 1400 eCards sent and there was 74% active engagement with the system.

Fremantle recognised as a Fair Trade City

KEY PROJECT: PERFORMANCE MANAGEMENT TRAINING

All existing and newly hired leaders at the City undergo Performance Management training and are given a Managing for Performance Guide as an additional resource. This workshop is designed to assist leaders in developing and sustaining a high performing and effective workforce by addressing underperformance and ensuring an appropriate process is in place to identify, manage and remedy underperformance and misconduct. In 2018, 47 leaders were registered to this workshop.

ADDITIONAL PROJECTS AND ACTIONS

ACTION	DESCRIPTION
Traineeship Program	Seven Indigenous trainees undertook a program of study and work placement in a Certificate III in Business Administration in FYE 2018 with the City. Of these, four were employed by the City following their study.
Safety Training	Eleven Infrastructure Engineering Construction and Maintenance Construction team members successfully completed a safety training course for small plant items in November 2018, as part of our dedication to safety and ongoing development.
Verbal Judo	Verbal Judo training is all about tactical communication and the art of persuasion that enables the user to generate compliance in others under stressful conditions by used learned patterns of behaviour. Fifty-one staff

ADDITIONAL PROJECTS AND ACTIONS

	completed this training in 2018. The training received very positive feedback and is being run again in 2019.
Cultural Awareness Training	Thirty-nine people registered for the Cultural Awareness Training Towards Meaningful Reconciliation. This training focused on Aboriginal culture and providing frameworks for making sense of our relationship today and what we can all do to improve it.
Operational Leadership Development Program	Twenty-five staff from infrastructure, facilities and environment and parks and landscapes undertook an operational leadership course in August-October 2018. The aim of the course was to develop leadership skills in the transition from a technician to a leader at the City.



Figure 18: Indigenous traineeship program

EQUITY AND LOCAL ECONOMY - COMMUNITY

Creating safe, equitable places to live and work which support local prosperity and international fair trade

CITY OF FREMANTLE TARGET

The City of Fremantle will continue to provide a broad range of support and incentive mechanisms to foster new and existing local business. It will support the community in its drive towards economic, environmental and social sustainability. It will provide a full package of support, training and engagement mechanisms in accordance with its Economic Development Strategy by 2020.

INDICATORS

Population data (Census data)

People working in the City (Economic ID – <https://economic-indicators.id.com.au/>)

Net lettable office and retail area (City of Fremantle development pipeline report)¹⁶

Vacancy rates (City of Fremantle vacancy report)

Engagement with the community (MySay visitors)

DATA	2016	2017	2018
People living in the City	30,572	31,568	32,482
People working in the City	32,600	31,015	30,426
Nett lettable office area (sqm) ¹⁶	38,234	39,621	41,644
Nett lettable retail area (sqm) ¹⁶	16,568	21,191	40,149
Retail vacancy rate (%)	9.2	11.0	13.4
MySay Freo visitor numbers	13,600	22,000	32,600

While the number of people working in the City has decreased and the retail vacancy rate increased in the last three years, these figures are consistent overall figures for WA and Perth. The completion of the Sirona Development and the King's Square Redevelopment Project (see additional projects) are major local economic regeneration projects that aim to bring people back into the City.

WALKING VISUAL AUDIT OF RETAILERS

In November 2017 and 2018, a walking visual audit of independent retailers was carried out on High Street (High St mall to Henry St) and Market Street (train station to Bannister St). Each shop front was counted as either 'Independent, Non-Independent or Vacant' and the below values then derived from these statistics.

	High St		Market St	
	2017	2018	2017	2018
Independent	70%	70%	69%	61%
Non-Independent	17%	21%	22%	28%
Vacant	13%	9%	9%	11%

¹⁶ Nett lettable area for office and retail are figures for additional nett lettable area on top of the existing lettable area as of 2016. It is a cumulative figure that refers to upcoming approved developments. The 2016 figures are taken from Fremantle's Economic Development Strategy 2015-2020. Total office supply from 2015-17 is estimated at 61,557 m² and retail at 65,390 m² (Land Use and Employment Survey 2015/17, Department of Planning, Lands and Heritage 2017).

KEY PROJECT: FREO ALTERNATIVE – BIG THINKING ABOUT SMALL HOUSING

‘Freo Alternative – Big Thinking about Small Housing’ is the City’s new approach to infill housing in suburban areas. Fremantle’s inner city provides a diversity of housing options, however there are fewer small housing options in Fremantle’s suburban areas, even though there are a relatively higher proportion of 1-2 people households.

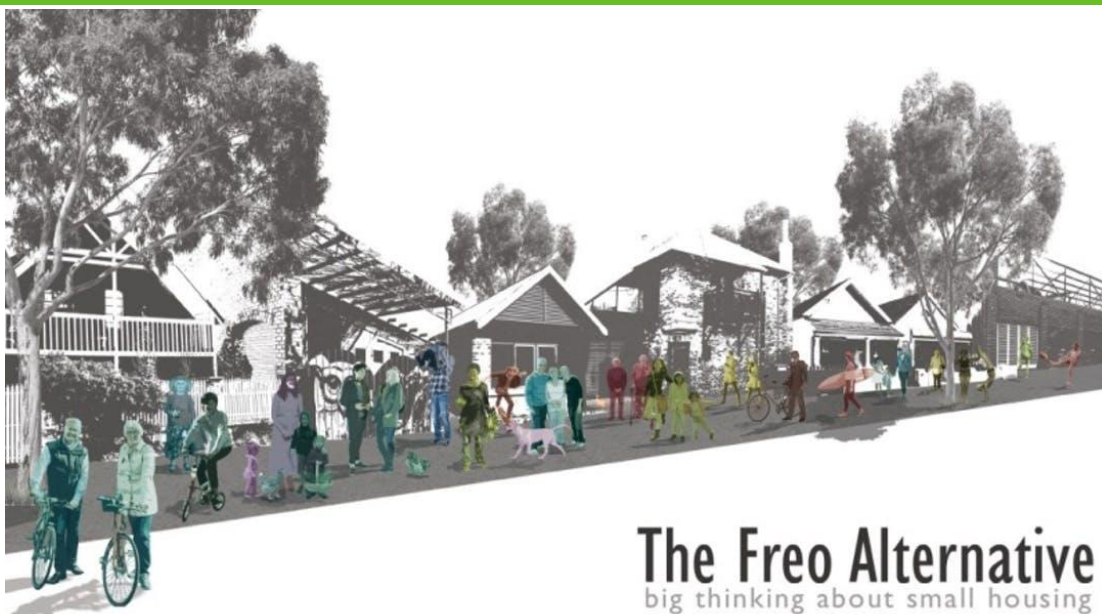
Stage 1 and 2 of Freo Alternative involved extensive community engagement to establish a shared community vision on future housing, and to determine how this vision could be realised through changes to the City’s Local Planning Scheme and adoption of a new planning policy.

On 28 March 2018, Council gave its final approval to Freo Alternative, formally known as the ‘Local Planning Scheme Amendment No. 63’. The final proposal relates to targeted areas in White Gum Valley, Samson, Hilton, O’Connor, Beaconsfield and Fremantle that are close to public transport and were identified as having potential for alternative housing and further infill development . Subsequent to Council’s approval, the scheme amendment was forwarded to the Western Australian Planning Commission (WAPC) for final assessment and a decision by the Minister for Planning. Freo Alternative was approved by the Minister (subject to some minor modifications) and gazetted on the 12 February 2019.

In general, the provisions include:

- Applies to lots larger than 600 square metres.
- New dwelling/s to have a maximum floor area of 120 square metres.
- Maximum of three dwellings on lots of 750 square metres or less.
- Minimum of 30 square metres of outdoor living area per dwelling.
- Developments to have higher than standard energy efficiency ratings, and include solar panels, rainwater tanks, grey water systems or meet best practice accessibility standards.
- 70 per cent of the entire development site to be open space, with some variation allowed to 60 per cent open space.
- At least one large tree to be retained or planted.
- A maximum of one parking bay per dwelling.
- Developments to be referred to the City’s Design Advisory Committee to consider design quality.

The outcomes of the Freo Alternative will promote economic, environmental and social sustainability by providing an alternative small housing option in Fremantle’s suburban areas, allowing the young and old to continue living in the places they love.



The Freo Alternative
big thinking about small housing

Figure 19 The Freo Alternative

ADDITIONAL PROJECTS AND ACTIONS

ACTION	DESCRIPTION
Destination Marketing Strategy	<p>The Destination Marketing Strategic Plan 2018-2022 was developed by the City in collaboration with the Destination Marketing Working Group (DMWG). The DMWG comprised a group of tourism, retail, hospitality and business experts with extensive knowledge of Fremantle. The Plan was developed with extensive consultation from a variety of stakeholders and followed the expiry of the City of Fremantle Strategic Marketing Plan 2014-17. It presents a high level strategic framework intended to guide destination marketing activities for a period of four years.</p> <p>The Plan establishes the creation of three Brand values that capture the essence of Fremantle, including:</p> <ul style="list-style-type: none"> • Spirit – relating to Fremantle’s vibrancy, liveliness, colour and fun • Soul – relating to Fremantle’s arts and culture, heritage buildings and live music • Relating to Fremantle’s beaches, maritime history, the port, seafood industry and unique coastal precincts such as the Fishing Boat Harbour. <p>Based on these values, the positioning statement developed as a basis on which to build Fremantle’s brand identity was ‘<i>A maritime city with spirit and soul</i>’.</p>
King’s Square Redevelopment and public realm upgrade	<p>In 2018 significant progress was made towards the King’s Square Redevelopment project with the City’s old administration building being demolished to make way for the City’s new Civic Centre. An essential component of the Kings Square Redevelopment Project includes the upgrade of the public realm to recapture its importance as the central public space of a revitalised city centre.</p> <p>In 2018, the concept plan for the public realm was endorsed (February 2018) prioritising pedestrians and shared spaces and a high quality landscaping and public amenity. All the mature trees located in the building footprints – 7 London Planes and 3 Palms, were successfully relocated within the square precinct. The Moreton Bay Figs in decline since 2011 were removed and replaced with the ‘Christmas Fig’ progressing. A Moreton Bay Fig was selected and will be moved from Ord Street to the square.</p> <p>The detail design and documentation of stage 1 of works – new buildings setting (Newman Court and High Street (part) started with the aim of construction commencing in mid-2019.</p> <p>Places for people is the vision with civic and community activity as the focus.</p> <p>The King’s Square Redevelopment Project and the Sirona Development (below) represents a major local economic regeneration achievement.</p>
Sirona Development	<p>Significant progress was made on the construction of Sirona’s development located opposite the City’s new Civic Centre. The Sirona development is supporting a substantial number of construction jobs in the City. In 2019 the building will house the WA Department of Communities, 1500 new jobs into the city.</p>
Adulting 101 workshop series	<p>The City has been exploring new avenues to engage and support older young people. This led to the creation of the Adulting 101 workshop series. These workshops are for 15 – 25 year olds and aim to help young people ‘adult’ with assistance in the areas of: employment interviewing and networking, financial</p>

ADDITIONAL PROJECTS AND ACTIONS

	literacy for budgeting, saving and independent living and entrepreneurial info. The small intensive workshops provide a range of skills to young people that aren't always taught in schools.
Connection of job providers and job seekers	In conjunction with the Adulting 101 workshop series, the City's Youth Officer has been connecting all the Fremantle Job Active Providers (JAPs) and youth support workers together through a quarterly held meeting. This has brought together many new JAPs and youth workers to better collaborate and work together to support our 'at risk' young people in the community. The network shows signs of continued growth with training providers, Centrelink and other services wishing to be included.
Lifelong Learning Program	Programs and workshops run through the City's Lifelong Learning Program provide our community members with ongoing learning and training opportunities. A selection of ongoing programs and workshops run in 2018 included Getting Back to Work, Tax Help, Beginners Computing, Tech Help and My Health Record Information Sessions.



Figure 20 Relocation of London Planes trees for the King's Square public realm upgrade

HEALTH AND HAPPINESS - CORPORATE

Encouraging active, sociable, meaningful lives to promote good health and well being

CITY OF FREMANTLE TARGET

The City of Fremantle will promote and support health and wellbeing in the workplace by providing increased access to opportunities for staff to participate in programs relevant to their needs and will monitor the success of these programs through annual productivity / days lost to sickness / wellness and wellbeing statistics. The City will undertake a survey of health and well-being needs within the organisation complete by 2016 and develop a full program of health and well-being activities and events by 2020.

INDICATOR

Maintain or increase training opportunities
Maintain or increase wellness opportunities

BASELINE DATA (2015/2016)

An employee engagement survey was carried out in 2015 by Aon Hewitt. Employee engagement at the time was 57%, which is the Australia and New Zealand norm for Local Councils. Advocacy was noted as reasonably strong and there was a reasonable commitment to stay in the long term. Three employee wellness programs were run in 2016 with a total of 92 staff attending.

DATA

Number of people participating	2017	2018
Leisure Centre off peak membership (free)	32	12
Leisure Centre peak membership (half price)	32	18
19 day work month option	91	82
Social club members	50	56
Participation in fitness classes ¹⁷	95	234
Cancer skin care checks	121	100

KEY PROJECT: HEALTH AND WELLBEING PROGRAM

The City recognises that the health and wellbeing of our employees is important and is committed to providing a safe, healthy and supportive environment in which to work. Each year the City offers employees the opportunity to participate in the health and wellbeing program. In 2018, our 2018 Health and Wellbeing Calendar included the following events:

- April Flu Shots: 96 staff received a free flu vaccination in April 2018 as part of our Health and Wellbeing initiative through WorkVax.
- May Virgin Pulse Corporate Challenge (detailed description below)
- June Yoga and Pilates Fitness Class: Absolute Balance facilitated 10 yoga classes in June 2018, which had a total of 197 staff registrations.
- July Blood Donations: 29 staff donated blood to the Red Cross.
- August Nutrition Session and Fruit Box Delivery: Staff were invited to attend a series of

¹⁷ Fitness classes in 2017 included boot camp, stretch and flex and walking groups. In 2018, fitness classes included yoga and pilates and boxing.

workshops and take their pick of fresh fruits on the day. The four workshops covered: nutrition facts and fiction, the basics of nutritional principles, eating well on the go, and reading nutritional information panels. Sixty-five people attended.

- **September Corporate Massages and Ergonomic Assessments:** Staff were offered corporate massages, ergonomic workshops and ergonomic assessments as part of this initiative. Eighty-three staff registered for this series.
- **October Mental Health Sessions:** A series of mental health workshops were run by LGIS on the topics of mental health awareness, workplace bullying awareness, work related suicide and mindfulness. Sixty-two people attended the workshops.
- **November Skin Checks:** 100 staff had a free cancer skin check.
- **December Boxing for Fitness – Absolute Balance** facilitated six boxing for fitness sessions with staff over three weeks. Thirty-seven staff participated, with many repeat attendances.

In addition to the above programs, staff can access the Fremantle Leisure Centre for free during off-peak periods, or can purchase a membership at half price for access during peak period. The wellbeing program also includes the Employee Assistance Program, which gives staff members access to free and confidential counselling services.

ADDITIONAL PROJECTS AND ACTIONS

ACTION	DESCRIPTION
Erik the Brave therapy dog	In 2018 the Fremantle Library welcomed a therapy dog to its volunteer team. Erik the Brave, Conqueror of Hearts, a Brussels Griffon attends It's All About Story sessions each fortnight, allowing children to read books to him, and also visits other locations in the City's offices including the Wanjoo Lounge and all staff areas. These regular visits have become a highlight for many staff and clients, and encourages happiness and enjoyment in the workplace.
19 Day Work Month Option	Eligible full time employees have the option to work an additional 30 minutes per day, and be eligible for one day off in every four weeks, in addition to the three days off between Christmas and New Year. In 2018, 82 employees took up this option, down from 91 in 2017. In addition, there are 78 full time employees working a 9 day fortnight.
Social Club	The City has a social club for staff members. For \$3 a fortnight, the social club subsidises offers and event for staff members and their partners. Events in 2018 included regular lunches, reduced movie and Royal Show tickets, a pub crawl and a Christmas celebration. In December 2018, there were 56 members of the social club, up from 50 in 2017.
Virgin Pulse Global Challenge.	The Virgin Pulse Global Challenge is a 100 day challenge over May to August that encourages participants to focus on their holistic wellbeing, with four modules on Activity, Nutrition, Balance and Sleep. 105 staff comprising 16 teams participated in the challenge, and were given a 'Muzz Buzz' wristband to track their activity and steps. Fortnightly updates highlighted the most active and improved teams and participants. Over the challenge, staff collectively took 103,912,007 steps (66,504km), which equates to walking around the world 1.66 times.

HEALTH AND HAPPINESS - COMMUNITY

Encouraging active, sociable, meaningful lives to promote good health and well being

CITY OF FREMANTLE TARGET

The City of Fremantle will promote and support health and wellbeing in the community by providing increased access to opportunities for community members to participate in programs relevant to their needs. The City will monitor increase in uptake of relevant health and wellbeing programs on offer through the various City and community organisations offering opportunities.

INDICATOR

Number of people accessing City events, facilities and programs
WA Police crime statistics (Fremantle offences)¹⁸

DATA	2015	2016	2017	2018
Leisure Centre visits	460,000	456,000	488,660	496,080
Leisure Centre members per month	-	-	970	921
Library visits ¹⁹	200,000	210,000	174,608	130,233
Library borrowings	-	-	146,827	120,432
Visitor centre numbers ²⁰	-	-	88,660	66,852
One Stop Shop participants per day	40	40	38	
Fremantle offences (FY)	3278	3811	3496	3428

LIFELONG LEARNING PROGRAMS

A variety of ongoing programs and classes that promote Health and Happiness are run through the Lifelong Learning Program on a weekly basis. The majority of classes are attended by 12 people on average per week. Programs include fitness classes such as pilates, dancing devas, stretch and balance, seniors badminton and ladies netball, relaxation classes such as mindfulness meditation and yoga and relaxation; or support groups including Grow Mental Health Support Group, Hearing Voices Fremantle, Speakeasy, Caring for Someone with Dementia and the Compassionate Friends of Western Australia.

KEY PROJECT: FREMANTLE LIBRARY MAKERSPACE EVENTS

On 15th June, Fremantle Library showcased a plethora of ways families can engage together through the Create, Play and Make Makerspace. This built on the success of the inaugural Makerspace event held in February to celebrate the opening of the temporary premises, and brought in 216 attendees. Highlights included creating comic strips with author /illustrator James Foley, learning to use a sewing machine with women from Boomerang Bags, creating your own zine, hacky sack and hula hooping, building your own unique LEGO constructions and sharing some pizzas. This collaborative event was run by Lifelong Learning and Community Development. The involvement of both teams enabled a mix of creative activities for young and old.

¹⁸ <https://www.police.wa.gov.au/Crime/CrimeStatistics#/start>. Data includes offences (including assault, burglary, graffiti, motor vehicle theft etc) from the suburb of Fremantle only.

¹⁹ Numbers for 2015 and 2016 include visits and borrowings. Counting methodology changed in 2017 and 2018.

²⁰ Door count was not available from October 2017 – March 2018. Total for Jan-March 2018 has been estimated.

On 29th November, the teams came together again to run the Sustainable Christmas Makerspace that was attended by 250 people of all ages. The event encouraged participants to explore the many ways to create, share and celebrate the holiday season without excess waste. Stalls included turning old books into new Christmas tree decorations, making mini-terrariums using recycled jars, making bunting with old material to use in place of balloons and creating memories in the Vintage Photo Booth. To encourage participants to reduce their plastic use, participants were taught how to create plastic free personal wrapping paper and cards, make Bee's Wax Wraps to replace plastic Gladwrap and make No Sew T-shirt bags and Boomerang Bags with recycled materials. Attendees were also able to join in the ukulele jam session, play some unusual games with and without screens plus enjoy a free BBQ in the courtyard.

ADDITIONAL PROJECTS AND ACTIONS

ACTION	DESCRIPTION
Freo Toy Library Open Day	Freo Toy Library opened its doors to the community for the 2018 Open Day in October, with Buster It's All About Play, a Cozy Coupe race track, sensory play area, LEGO station, face painting, sausage sizzle and a special storytime by local author Wendy Binks. Over 300 people attended the event at the Fremantle PCYC. Becoming a member of the Freo Toy Library is a great way to avoid toy burnout, by making use of the 2300+ toys in the collection. The feedback after the event indicated it was a great success and should occur each year.
Buster It's All About Play	Buster It's All about Play is a free, multi-sensory, hands-on active and child centred program that offers creative and fun opportunities for families to learn and play together. Throughout the year, Buster It's All About Play has appeared at many locations on Tuesday, Wednesday and Thursday mornings during term time, to allow families to engage with toys and other community members, reaching hundreds of attendees during 2018. The program will continue in 2019, in a new Summer and Winter program format.
Fre-O-Fit	Fre-O-Fit is a free six week outdoor group exercise program which aims to improve individual's health and wellbeing in fun in a supportive community setting. The program was piloted in January 2018 and it attracted 130 registrations across all ages groups but it particularly appealed to young mums and women aged 40 years and older. The weekly sessions run at three different locations across the City and consisted of cardio and resistance training. The feedback obtained at the conclusion of the program indicated that it was successful and should run again. Feedback also highlighted other areas that participants were interested such as pre and post health testing and mindfulness, therefore a second season of Fre-O-Fit launched in October 2018, consisting of two weekly group circuit sessions and one stretch and flex session. The overall number of registrations has dropped from the pilot to 77 registrations but the class numbers have been continually higher and it has attracted more males. Free pre and post fitness testing were offered to the first 25 participants who registered with 9 participants taking up this offer.
South Beach Sports Court Opening	The South Beach Sports Court was officially opened in February 2018 after a lengthy consultation and design process. The court is able to cater for volleyball, futsal and basketball. For the opening, the City worked with Basketball WA to deliver an Aussie Hoops session for primary school aged children. A number of enthusiastic and committed community members

ADDITIONAL PROJECTS AND ACTIONS

	<p>helped to deliver a streetball style event later in the afternoon and evening for the youth and adults. The community members delivered a number of different shooting competitions and a King of the Court 3 on 3 competition. The event included DJ's and a MC, adding great atmosphere to the event.</p> <p>The South Beach Sports Court Opening attracted approximately 200 people, with many families coming down to participate in the Aussie Hoops and staying on to watch the action on the court with a picnic.</p>
South Beach Futsal Fun	<p>Futsal is a fast paced, dynamic and enjoyable 5-a-side version of football (soccer) that caters for both male and female participants. It is one of the fastest growing sports in the world. Futsal is usually played indoors on a hard surface but things are little different in Fremantle. Using the South Beach Sports Court we brought the game outdoors and with the help of Fremantle Futsal Club and Pro Futsal ran two come and try sessions for 5-15 year olds.</p>
Library Sports Equipment	<p>Being located at Fremantle Oval now means that library can also be a space for physical activity. A range of sports equipment such as footballs, soccer balls, Frisbees, grip balls, vortexes and skipping ropes can now be loaned for use on the oval. Whether it's a break between study sessions or entertaining the kids before or after a visit to the library, the addition of the sports equipment has been a big hit.</p>
Act-Belong-Commit Campaign	<p>In July 2018 the City partnered with Mentally Healthy WA with the Act-Belong-Commit campaign. All of the programs and events offered by the City embody the Act-Belong-Commit message so partnering with Mentally Healthy WA was a natural progression.</p>
Happiness Project	<p>The Happiness Project is a collaboration between ECU Design and the City that has been running since 2014. The project aims at using design and innovative approaches to inject happiness into the City of Fremantle. In 2018, students were directed to design their projects around topics relevant to the Fremantle, including homelessness, local and sustainable food and promoting biophilic cities. The outcomes are a range of inspiring and innovative ideas that were presented at a public exhibition at Moores Building in Fremantle.</p> <p>The winning project in 2018 was Half Cup by Kay Prosser. The Half Cup Project aims to help and engage with the most vulnerable members of the community – the homeless. Half Cup ties into the increasing interest in reusable coffee cups, and uses it as a basis for engaging with and raising money for the homeless community. Cups with art work designed by a local homeless volunteer, featuring links to their homelessness story are proposed to be stocked, sold, and reused in Fremantle cafes. Profits from the sale of the cups go to local not-for-profit organisations, with a small percentage going to the café. Increasing awareness of homelessness will help to destigmatise and challenge misconceptions people have about the homeless, leading to improved social interaction and an increased sense of worth to the homeless community. The City will engage with Kay in 2019 to progress the project.</p>



Figure 21: South Beach Sports Court opening



Figure 22: Buster It's All About Play

TOP PRIORITIES FOR 2019

The City's One Planet Strategy includes a range of major and minor projects designed to meet our 2020 targets. The table below provides a snapshot of anticipated programs and projects for 2019 for both corporate and community. A particular priority will be placed on furthering the progress made in Energy and Waste (and reviewing natural gas use), in reviewing sustainable water use, and in implementing the Sustainable Events policy to reduce use of non-renewal and non-biodegradable materials.

Further detail will be provided in our One Planet Action Plan for 2018/19, to be published following confirmation of the financial year budget.

One Planet Principle	Corporate and community projects for 2019
Zero Carbon Energy	<p><i>Making buildings and manufacturing energy efficient and supplying all energy with renewables</i></p> <ul style="list-style-type: none"> • Installation of solar PV on 3-4 community buildings • Track collective community carbon emission savings through the One Million Woman app • Review of carbon emission monitoring system and carbon offset certification programs • Development of South Fremantle solar farm • Provide support for the RENEW Nexus Project
Zero Waste	<p><i>Reducing consumption, re-using and recycling to achieve zero waste and zero pollution</i></p> <ul style="list-style-type: none"> • Roll out of FOGO • Amendment to Property Local Law 2002 to control the release of balloons in public places • Guidelines and requirements for waste management in new developments to be prepared following roll out of FOGO • Roll out of Sustainable Events Policy • Preparation for implementation of the Container Deposit Scheme Collection Point at Recycling Centre. • Rollout of source-separation recycling bins throughout the Main Administration building and the Depot • Continued participation in the Garage Sale Trail • Official opening and promotion of the Fremantle Reuse Store at the Recycling Centre • Continuation of the Recycling Roadshow Roll Out to provide community education on waste and recycling • Support for community clean up days
Travel and Transport	<p><i>Reducing the need to travel, encouraging walking, cycling and low carbon transport</i></p> <ul style="list-style-type: none"> • Review of car share policy • Monitoring of staff vehicles via trackers. Monitor fuel efficiency, driving style, distance, full analysis of vehicle's driving patterns. Give paybacks on transferring to EVs. • Formal adoption of and roll out of the new Bike Plan infrastructure and

One Planet Principle	Corporate and community projects for 2019
	<p>programs</p> <ul style="list-style-type: none"> • Engage with schools around the Your Move program and opportunities for bike and walking infrastructure improvements • Application for state government bike grants to improve three key intersections • Installation of permanent bike racks at Esplanade Park and Fremantle Oval • Initiate pedestrian priority and connectivity review
Materials and Products	<p><i>Using materials from sustainable sources and promoting products which help people reduce consumption</i></p> <ul style="list-style-type: none"> • Implementation of the Sustainable Events Policy, including preparation of checklists and procedure for non-compliance, update to the City's Sustainable Events Guidelines and meetings with event organisers. • Review and update of the Local Government Property Amendment Local Law 2019 (local law) to include (amongst others) restrictions of the release of balloons in public places. • Continued work on the Going Digital project • Track community sustainable product use through the One Million Woman app, launched in December 2018. • Promotion of sustainable businesses in Fremantle through creation of digital media posts and videos. • Continue support for the Boomerang Bags community group. • Establishment of a reuse shop at the Fremantle Recycling Centre. • Implementation of the Sustainable Events Policy.
Local and Sustainable Food	<p><i>Promoting sustainable humane farming and healthy diets high in local, seasonal organic food and vegetable protein</i></p> <ul style="list-style-type: none"> • Continued access to the LGIS Healthy Intel Portal • Nutrition sessions as part of the City's Health and Wellbeing Program. • Support for community gardens • Implementation of the verge garden policy and verge garden preparation assistance scheme which will provide residents with verge preparation, mulch provision and plants. • Food Sensations to be run in January 2019
Sustainable Water	<p><i>Using water efficiently, protecting local water resources and reducing flooding and drought</i></p> <ul style="list-style-type: none"> • Review of the Water Conservation Strategy • Investigate cost effective desalination options for Gil Fraser Reserve to reduce scheme water top off. • Application for Gold Waterwise Status • Procurement of a new data management program with expanded capability to monitor all water metres. • Metering of various sites to monitor usage and detect leaks • Verge Gardens: Continued implementation of the verge garden preparation assistance scheme which will provide residents with verge preparation, mulch provision and plants. • Community engagement and education around water efficiency and waterwise gardening. • Continued support for RENEW Nexus.

One Planet Principle	Corporate and community projects for 2019
Land and Nature	<p><i>Protecting and restoring land for the benefit of people and wildlife</i></p> <ul style="list-style-type: none"> • Preparation of Policy of Significant Trees and Vegetation Areas Register • Review of Sir Frederick Samson Park Bushfire Hazard Reduction Plan 2014: work includes upgrades to support the dog on lead in bushland policy change. • Fauna Monitoring Program • Renewal of Grigg Park using recycled local wood • Funding for Coastcare Facilitator (Perth Region NRM) and Perth NRM Coastcare schools adopt a plot program • Funding for South West Group NRM facilitator • Participation in cross-regional funded programs through South West Group NRM, including Reducing Fox Predation of Native Fauna by Better Targeting Trapping, Regional Scale Cat Owner Education, Conservation Volunteers Australia projects and volunteer skill development • Support for Friends Groups and community planting days • Investigate planning scheme amendment for mandatory planting in new developments
Culture and Community	<p><i>Nurturing local identity and heritage, empowering communities and promoting a culture of sustainable living</i></p> <ul style="list-style-type: none"> • Review of West End Conservation Policy • Community talk planned for April 2019 to update residents on the City's progress with our One Planet Strategy. • Development of a Reconciliation Action Plan • Continue feasibility study into an Nyoongar Cultural Centre • Continued development of a Community Safety and Crime Prevention Plan 2019-2023
Equity and Local Economy	<p><i>Creating safe, equitable places to live and work which support local prosperity and international fair trade</i></p> <ul style="list-style-type: none"> • Traineeship Program • Continuation of Lifelong Learning Program • King's Square Redevelopment Project and completion of Sirona project • Implementation of Destination Marketing Strategy • Freo Alternative – scheme amendment and policy • Social media promotion of sustainable businesses in the City
Health and Happiness	<p><i>Encouraging active, social, meaningful lives to promote good health and wellbeing</i></p> <ul style="list-style-type: none"> • Continuation of Health and Wellbeing Program, Reward and Recognition, Social Club and 19 Day Work Month Option • Support for the Happiness Project, run through Edith Cowan University and carried out in the City. • Continuation of the Lifelong Learning Program, Buster It's All About Play, Youth programs and Positive Ageing Program

