



# One Planet Strategy Annual Report 2017



## Table of Contents

INTRODUCTION .....	4
CITY OF FREMANTLE POPULATION DEMOGRAPHICS .....	5
SNAPSHOT OF KEY PROJECTS FOR 2017 .....	5
MESSAGE FROM BIOREGIONAL .....	6
ONE PLANET ANNUAL REPORT 2017 .....	7
ZERO CARBON ENERGY – CORPORATE .....	8
ZERO CARBON ENERGY - COMMUNITY .....	13
ZERO WASTE - CORPORATE .....	16
ZERO WASTE - COMMUNITY .....	19
TRAVEL AND TRANSPORT - CORPORATE .....	22
TRAVEL AND TRANSPORT - COMMUNITY .....	24
MATERIALS AND PRODUCTS - CORPORATE .....	27
MATERIALS AND PRODUCTS - COMMUNITY .....	31
LOCAL AND SUSTAINABLE FOOD - CORPORATE .....	33
LOCAL AND SUSTAINABLE FOOD - COMMUNITY .....	35
SUSTAINABLE WATER - CORPORATE .....	37
SUSTAINABLE WATER - COMMUNITY .....	39
LAND AND NATURE - CORPORATE .....	41
LAND AND NATURE - COMMUNITY .....	44
CULTURE AND COMMUNITY - CORPORATE .....	46
CULTURE AND COMMUNITY - COMMUNITY .....	48
EQUITY AND LOCAL ECONOMY - CORPORATE .....	51
EQUITY AND LOCAL ECONOMY - COMMUNITY .....	53
HEALTH AND HAPPINESS - CORPORATE .....	56
HEALTH AND HAPPINESS - COMMUNITY .....	58
TOP PRIORITIES FOR 2018 .....	61

## List of Tables

Table 1 Population demographics for the City of Fremantle .....	5
Table 2 Summary of key projects carried out in 2017 .....	5
Table 3 Electricity and gas consumption in key sectors and assets for FYE 2016. ....	8

<b>Table 4: Overall electricity consumption for all council facilities and assets in FYE 2016 and FYE 2017 .....</b>	<b>9</b>
--	----------

#### List of Figures

<b>Figure 1: Cities Power Partnership Foundation Partners.....</b>	<b>12</b>
<b>Figure 2 Solar powered lights at North Fremantle Bowling Club carpark.....</b>	<b>15</b>
<b>Figure 3 Opening day at the Fremantle Recycling Centre.....</b>	<b>18</b>
<b>Figure 4 Fremantle Councillors and Officers getting on board for the Garage Sale Trail. ....</b>	<b>21</b>
<b>Figure 5 Coloured symbols installed on Marine Terrace. ....</b>	<b>25</b>
<b>Figure 6: Posters used in the City of Fremantle Coffee Cup Campaign .....</b>	<b>29</b>
<b>Figure 7: Boomerang Bag bin at Woolworths .....</b>	<b>31</b>
<b>Figure 8: Key messages from the Healthy Food Workshop (photo credit: Heart Foundation) .....</b>	<b>34</b>
<b>Figure 9: Attendees and vegetable plots at the Hilton Harvest Community Garden .....</b>	<b>34</b>
<b>Figure 10: Mayor Brad Pettitt and local ward Councillors Sam Wainwright and Hannah Fitzhardinge at the Hilton Community Garden .....</b>	<b>35</b>
<b>Figure 11: City of Fremantle officially receiving their Waterwise Council Status .....</b>	<b>38</b>
<b>Figure 12: Sump transformation at White Gum Valley.....</b>	<b>40</b>
<b>Figure 13: Opening of Tuckfield Oval Parkland at Cantonment Hill .....</b>	<b>44</b>
<b>Figure 14 Unveiling of the Town Hall.....</b>	<b>47</b>
<b>Figure 15: Swiss street artist Felice Varini's installation Arc d'Ellipses, that stretched 800 metres down High St. ....</b>	<b>50</b>
<b>Figure 16 American Indian, Mary Sunbeam of the Appalachian Nation Cherokee tribe .....</b>	<b>50</b>
<b>Figure 17: Reward and recognition winners at the staff Christmas party .....</b>	<b>57</b>
<b>Figure 18: Girls skate clinics were a huge success! .....</b>	<b>59</b>

# INTRODUCTION

One Planet Living is a vision for a sustainable world where people lead healthy, happy lives within their fair share of the earth's resources. It is based on ten principles of sustainability that provide a framework to plan, deliver and communicate sustainable development and guide holistic thinking.

---

*Our Vision: The City of Fremantle aims to become Perth's most sustainable local government and a global leader – a place where we foster community in a way that supports quality of life, while respecting the limits of the planet on which we live.*

---

The Fremantle One Planet Strategy achieved national One Planet certification in 2014 and international certification 2015. The national targets outlined in the One Planet Fremantle Strategy 2014/15 to 2019/20 were updated to include corporate and community targets that reflect our international certification.

This 2017 Annual Report is the second review of our progress under international certification. The report outlines our progress towards corporate and community targets for each Principle, and details key projects and actions undertaken in 2017. Key priorities for 2018 are outlined in the final section.

The report was approved by Council in March 2018 and initial feedback from Bioregional has been incorporated.

	<b>Health and happiness</b>	Encouraging active, social, meaningful lives to promote good health and wellbeing
	<b>Equity and local economy</b>	Creating safe, equitable places to live and work which support local prosperity and international fair trade
	<b>Culture and community</b>	Nurturing local identity and heritage, empowering communities and promoting a culture of sustainable living
	<b>Land and nature</b>	Protecting and restoring land for the benefit of people and wildlife
	<b>Sustainable water</b>	Using water efficiently, protecting local water resources and reducing flooding and drought
	<b>Local and sustainable food</b>	Promoting sustainable humane farming and healthy diets high in local, seasonal organic food and vegetable protein
	<b>Travel and transport</b>	Reducing the need to travel, encouraging walking, cycling and low carbon transport
	<b>Materials and products</b>	Using materials from sustainable sources and promoting products which help people reduce consumption.
	<b>Zero waste</b>	Reducing consumption, re-using and recycling to achieve zero waste and zero pollution
	<b>Zero carbon energy</b>	Making buildings and manufacturing energy efficient and supplying all energy with renewables

## CITY OF FREMANTLE POPULATION DEMOGRAPHICS

The City of Fremantle covers an area of 19 km<sup>2</sup> and comprises the suburbs of Fremantle, North Fremantle, South Fremantle, White Gum Valley, Beaconsfield, Hilton, O'Connor and Samson.

Population demographics shown in Table 1 are provided by .id<sup>1</sup>, and are based on data from the 2016 Australian Census compiled by the Australian Bureau of Statistics<sup>2</sup>. The population numbers provided below are used in this report to calculate data on a per capita basis.

**Table 1 Population demographics for the City of Fremantle**

	2016	2017	2018
<b>Population living in CoF</b>	30,572	31,568	32,482
<b>Population working in CoF</b>	32,600	31,015	N/A
<b>Households</b>	13,428	13,793	14,168
<b>Av. Household Size</b>	2.22	2.23	2.23

## SNAPSHOT OF KEY PROJECTS FOR 2017

This section provides a summary of the key corporate and community projects carried out for each One Planet principle. More detailed descriptions are provided in the relevant sections.

**Table 2 Summary of key projects carried out in 2017**

One Planet Principle	Corporate Target	Community Target
<b>Zero Carbon Energy</b>	Corporate Energy Plan	1 Million Woman App
<b>Zero Waste</b>	Upgrade to Recycling Centre	Waste Management Strategy
<b>Travel and Transport</b>	Sustainable Corporate Transport Management – Actions Outlined in Corporate Energy Plan	Low Speed/Shared Areas Campaign Trial
<b>Materials and Products</b>	Sustainable Events Guidelines & Checklist review	Support for Boomerang Bags Concept
<b>Local and Sustainable Food</b>	Healthy Active By Design 'Healthy Food' workshop	Support for Community Gardens
<b>Sustainable Water</b>	Waterwise Council Status	Support for WGV Sump Transformation
<b>Land and Nature</b>	Urban Forest Plan	Opening of Tuckfield Oval Parkland at Cantonment Hill
<b>Culture and Community</b>	Sustainability Walkabout	One Day in Fremantle Festival
<b>Equity and Local Economy</b>	Ready Set Move	Funding and support for the Fremantle BID
<b>Health and Happiness</b>	Health and Wellbeing Program	Switch it Up

<sup>1</sup> <https://forecast.id.com.au/fremantle/population-households-dwellings>

<sup>2</sup> [http://www.censusdata.abs.gov.au/census\\_services/getproduct/census/2016/quickstat/LGA53430?opendocument](http://www.censusdata.abs.gov.au/census_services/getproduct/census/2016/quickstat/LGA53430?opendocument)

## MESSAGE FROM BIOREGIONAL

Over the last few years, global carbon emissions appeared to have stabilised but 2017 has bucked this trend and they are on the rise again. Alongside this, the effects of our carbon emissions are becoming clearer with 2017 announced by NASA as the second hottest year on record (the hottest is 2016).

The human impact of this is also becoming more apparent – at the time of writing Cape Town, a city of over four million, is less than 100 days from entirely running out of water.

In the face of our ongoing climate crisis, we urgently need sustainability leaders and it is excellent to see the City of Fremantle rising to the challenge and its residents joining enthusiastically.

As the council pushes forward a solar energy project that could power over 1000 homes, more than 350 residents also installed solar panels or hot water on their roofs in 2017 alone. Likewise, the City's commitment to water efficiency is matched by its citizens who have reduced per capita potable water consumption by 25% since 2010.

In its second year of monitoring, we are getting a better picture of where Fremantle's impacts lie and where it can make the biggest difference. Transport is a real challenge. While efforts are being made to encourage cycling and public transport, through free bus services for example, changes in community patterns are limited. Bolder steps to restrict the use of fossil-fuel powered cars will be required to create change.

The City of Fremantle is a wonderfully vibrant city, with an informal survey showing that 70% of shops in main retail areas are independently owned, but underneath the colourful public face is a determination to show that One Planet Living can be a reality. There is still a long way to go for Freo to be a truly sustainable city, but if the City can continue to harness the enthusiasm of the local population it may soon become reality.

# ONE PLANET ANNUAL REPORT 2017

The following sections outline the City's actions in 2017 that work towards our corporate and community targets for each Principle. For the purposes of this document, 'corporate' actions are those that the City takes to meet targets within its own operational boundaries. 'Community' actions are those that the City takes either with external partners, with or on behalf of local business, or with or on behalf of the Fremantle community.

In each section, the following information is given:

**City of Fremantle Target:** The overall corporate or community target for each Principle. Agreed targets are based on the Common International Targets for One Planet Councils, devised by Bioregional. In some areas, our targets have been updated

**Indicators and Baseline Data:** Where available, indicators and baseline data to monitor progress towards agreed targets are provided. For some principles, we are still determining baseline data and indicators to monitor progress. Targets may be based on both quantitative and qualitative data.

**2017 Data:** Indicator data for the 2017 calendar year that is used to monitor our progress. Data may be provided for the 2017 calendar year or the 2016/17 financial year.

**Key Project:** Detailed information on the key project or activity undertaken for that principle.

**Additional Project or Actions:** A description of additional actions for each Principle, and the impact that each action has towards reaching our targets.

# ZERO CARBON ENERGY – CORPORATE

*Making buildings energy efficient and delivering all energy with renewable technologies*

## CITY OF FREMANTLE TARGET

*The City of Fremantle will maintain its pledge of carbon neutrality for corporate emissions to 2020 via a mix of green power purchase options, renewable energy and energy efficiency measures. A plan will be in place for all buildings to be powered by 100% renewable energy by 2025.*

## INDICATOR

Energy consumption in City owned buildings and facilities

## BASELINE DATA

City financial records – power and gas use 2016. See Table 3.

Across key sectors and assets, **4,283,291** kilowatts of electricity (3941 tonnes carbon) and 1102 mega joules of gas (0.06 tonnes of carbon) were consumed in FYE 2016.

Baseline data was obtained for power and gas use from City financial records for the FYE 2016, and street lighting data is an estimate provided in our Corporate Energy Plan, which is based on the schedule of street lights provided. The data was obtained across key sectors and assets (shown in Table 3), where the City was directly responsible for electricity use and payment of bills. Equivalent data for FYE 2017 is not currently available due to changes in building asset nomenclature and financial methodology. Based on recommendations in the Corporate Energy Plan, the City is currently reviewing its carbon accounting methodology, and will endeavour to have this in place by the annual review for 2019.

**Table 3 Electricity and gas consumption in key sectors and assets for FYE 2016.**

Facility	Total electricity consumption (kWh)	Total gas consumption (MJ)
Street Lighting	1,700,000	N/A
Commercial Properties	N/A	N/A
Administration Building	689,154	137
Parks Lighting	535,066	N/A
Leisure Centre	494,407	581
Commercial Parking	456,599	N/A
Fremantle Arts Centre	231,857	N/A
Other	176,208	384
<b>Total consumption FYE 2016</b>	<b>4,283,291</b>	<b>1,102</b>
<b>Total (tonnes CO<sub>2</sub>)</b>	<b>3940.63</b>	<b>0.06</b>

To enable comparison across years, additional electricity and carbon data for FYE 2016 and FYE 2017 for the facilities and assets listed below is shown in Table 4. While the City owns the facilities included in these calculations, many are leased or rented and the City therefore has no control over



energy use. Electricity consumption and emissions data for these facilities is measured through energy monitoring and management software, GreensenseVIEW.

- Council facilities: 74 facilities including carparks
- Lighting: auxiliary lighting and street lighting
- Parks and reserves
- Sports and physical recreation: Fremantle Leisure Centre, Ken Allen Field and Samson Recreation Centre.

**Table 4: Overall electricity consumption for all council facilities<sup>3</sup> and assets in FYE 2016 and FYE 2017**

Organisational Boundary	Electricity Consumption (kW)		Emissions (tonnes carbon)	
	FYE 2016	FYE 2017	FYE 2016	FYE 2017
<b>Sports and Physical Recreation</b>	2,966,944	1,122,500	2,670	1,010
<b>Council Facilities</b>	3,580,278	3,455,000	3,222	3,109
<b>Parks and Reserves</b>	391,667	383,056	352	345
<b>Lighting</b>	114,444	97,222	103	88
<b>Total</b>	<b>7,053,333</b>	<b>5,057,778</b>	<b>6,348</b>	<b>4,552</b>

The yearly decrease in emissions is largely due to the drop in emissions from Sports and Recreation. Data in GreensenseVIEW attributes this to a drop in emissions at the Fremantle Leisure Centre. At this stage, we are unable to attribute this reduction to any particular management activity, however an audit of the cogeneration system at Fremantle Leisure Centre is planned for 2018, as is a review of our carbon accounting methodology. The audit and review should enable a clearer picture of our corporate emissions for 2018.

An estimate of the City's fuel consumption was provided in the City's Corporate Energy Plan (JBA 2017). The fuel data is a combination of reports through the fuel card system from the provider (BP) and depot fuel consumption figures. Estimated fuel consumption and emissions for the year 2016/17 was 118,911 litres and 315,193kg CO<sub>2</sub>e/year.

Fremantle notes that carbon emissions from refrigerant gases can contribute significantly to total carbon emissions. These will be considered once we move into our new building at King's Square.

#### KEY PROJECT – CORPORATE ENERGY PLAN

In line with our Zero Carbon Energy target, the City of Fremantle engaged private consultants to prepare a Corporate Energy Plan that outlines an achievable pathway for the City to move to running all corporate operations on 100% renewable energy by 2025.

The Plan outlines eight management actions that are described in detail throughout the Plan and are presented in terms of short, medium and long term actions. The Plan addresses increased building efficiency, increased renewable energy consumption and outlines recommendations that work towards eliminating the need to purchase carbon offsets.

The management actions are described in detail throughout the report, and must be reviewed for a complete understanding of what is proposed. However, a brief overview is presented below.

1. Prepare an Annual Energy Report that introduces consistent reconciliation of energy data

<sup>3</sup> Includes council facilities where electricity use is not under the City's control

2. Amalgamate the City's electricity accounts to create a 'contestable' portfolio. A contestable customer is one that consumes over 50 megawatt hours of electricity per year and is allowed to choose their electricity supplier. In comparison, a non-contestable customer in the South West Interconnected System is one that consumes 50 megawatts hours of electricity or less per year, and must use Synergy as their electricity provider. The creation of a contestable portfolio allows simplification of accounts and increased bargaining power for the City when negotiating electricity supply for a single larger account.
3. Based on the portfolio agreement, negotiate with the energy retailer for multiple sources of production and consumption to be interconnected. This would allow 'netting off' between sites, where excess PV production at one site could be netted off against increased consumption at another site. Essentially, power is transferred and used behind the meter. Overall this would reduce the amount of electricity consumed from the grid, reduce costs and improve the use of green power.
4. Continually reduce energy consumption in buildings: Introduce regular energy audits and a mechanism to incentivise efficiency projects.
5. Maximise local renewable production without increasing the City energy costs. This may involve the City becoming the anchor customer that enables a new renewable energy project to be developed.
6. Source green energy from an external provider, preferably in the Fremantle area.
7. Upgrade traditional street and park lights to more energy efficient LEDs.
8. Continue to migrate the fleet to Hybrid Electric Vehicles and set an emissions-per-kilometre target.

#### ADDITIONAL PROJECTS AND ACTIONS

ACTION	DESCRIPTION
<b>Solar Farm investigations</b>	Epuron has now lodged a development application for a 5MW solar farm and completed a draft site management plan with a view to achieving planning and environmental approvals early in 2018. A lease is also being negotiated. Subject to approval of lease and statutory requirements, construction should commence in mid-2018 with completion within 12 months. It is expected that Epuron will sell the electricity to Synergy, and the community will be able to purchase the electricity through Synergy's 'green power' option.
<b>Cities Power Partnership</b>	<p>The Cities Power Partnership is a free national program led by the Australian Climate Council, that exists to celebrate and accelerate the emission reduction and clean energy successes of Australian towns and cities. The City of Fremantle was one of the first 35 Local Governments across Australia to join the Cities Power Partnership. In joining the Partnership, the City pledged to take five key actions across the categories of renewable energy, efficiency, transport and working together. The City has pledged to the following actions:</p> <ul style="list-style-type: none"> <li>• Power council operations directly by renewable energy or by purchasing Greenpower. Increase the level of renewable power for council operations over time.</li> <li>• Provide the opportunity for unused council managed land at the former South Fremantle landfill site to be used for renewable energy purposes</li> <li>• Endorse knowledge sharing and strengthen the local community's capacity and skills in renewable energy, energy efficiency and sustainable transport.</li> <li>• Encourage sustainable transport use (public transport, walking and cycling) through Council transport planning and design.</li> <li>• Progressively roll out installation of energy efficient lighting in new City-</li> </ul>

## ADDITIONAL PROJECTS AND ACTIONS

	<p>owned buildings and lighting assets. Advocate for and support upgrades to street lighting not maintained by the City to be installed with energy efficient lighting.</p> <p>Being members of the Cities Power Partnership enables us to engage with and support other councils in emissions reductions, and keep updated with the latest technology and improvements in this space.</p>
<b>Carbon Neutrality</b>	<p>Fremantle is a 'carbon neutral' Council. Our residual emissions are currently 'offset' via the purchase of a combination of local biodiversity offsets and certified overseas offsets. In 2016/17 the City offset 6000 tonnes of carbon emissions through:</p> <ul style="list-style-type: none"> <li>• The surrender of Biodiverse Reforestation Carbon Offsets in the Yara Yarra Biodiversity Corridor Western Australia, and</li> <li>• The surrender of VCS-REDD avoided deforestation in the Amazon Rainforest.</li> </ul> <p>Our purchase of offsets will decrease as we move towards 100% renewable energy.</p>
<b>Upgrade City-owned streetlights</b>	<p>Upgrade of City-owned streetlights to more energy efficient alternatives. Along Market St and South Terrace, 36 x 150W metal halide luminaires were upgraded to 40W LEDs. Power has been reduced from 5.4kw to 1.4kw and the energy savings can be calculated at approximately 17,344kwh per year (from 23,652kwh down to 6,307kwh), based on an average of 12 hours usage per night.</p>
<b>North Fremantle Bowling Club</b>	<p>New solar powered LED lights were installed at North Fremantle Bowling Club in November 2017.</p>

Key projects for 2018 include:

- Pursue staged implementation of the Corporate Energy Plan in accordance with an approved and funded scope of works
- Review of electricity and gas monitoring methodology and building nomenclature in Tech1 and GreensenseVIEW
- Audit of the Leisure Centre cogeneration system



**Figure 1: Cities Power Partnership Foundation Partners**

# ZERO CARBON ENERGY - COMMUNITY

*Making buildings more energy efficient and delivering all energy with renewable technologies*

Baseline community data was sourced from Synergy and the Clean Energy Regulator ([www.cleanenergyregulator.gov.au](http://www.cleanenergyregulator.gov.au)). Every month the Clean Energy Regulator publishes small-scale renewable energy installation data files according to postcode, including installation of small scale photo voltaic systems and solar hot water heaters. The data for Fremantle was sourced from the [Clean Energy Regulator](http://www.cleanenergyregulator.gov.au) website, specifically the postcode data for small scale installations spreadsheet, using the postcodes 6159, 6160, 6162 and 6163<sup>4</sup>). Data from the Clean Energy Regulator reflects residents' attitudes towards and uptake of solar energy.

## CITY OF FREMANTLE TARGET

*The City of Fremantle will support the community to access a range of green power purchase options, renewable energy and energy efficiency measures and encourage uptake of renewables through education on and promotion of new technologies, with a goal of City of Fremantle becoming zero carbon by 2025.*

## INDICATORS

Residential solar energy uptake

1 Million Women App tracking personal carbon outputs- to be released early 2018

## BASELINE DATA (2016)

No. of small scale solar PVs installed: 283  
Total small scale solar in CoF since 2001 = 2909  
% of households with solar PVs: 22%

No. of solar water heaters installed: 106  
Total solar water heaters in CoF since 2001: 1813  
% of households with solar hot water: 13.5%

## 2017 DATA

No. of small scale solar PVs installed: 352  
Total small scale solar in CoF since 2001 = 3261  
% of households with solar PVs: 24%

No. of solar water heaters installed: 91  
Total solar water heaters in CoF since 2001: 1904  
% of households with solar hot water: 13.8%

## KEY PROJECT – FOUNDATION PARTNER FOR 1MILLION WOMAN APP AND ROADSHOW

In March 2017, Council resolved to become a foundation partner with 1 Million Women in launching their new app and roadshow. The free to download App will provide users with daily carbon reduction tips around everyday lifestyle choices, in the key areas of home energy reduction and clean energy options, minimising food waste, reducing overconsumption, sustainable fashion and low-impact travel. The App is aimed at women but is also available to men.

The App will track the actions that are undertaken, and will showcase individual and collective impact through real time measures, including a 'map' showing where users are carrying out the same activities and how much carbon is being saved by both individual and collective efforts.

Becoming a foundation partner will enable the City to use the App to capture data on community climate actions and the actual reduction in carbon emissions as a result of those actions. Regular reports will capture data specific to the City of Fremantle area and there will be a dedicated group page for City participants, where we can upload stories, events and initiatives in our council area. The app is scheduled for release in early 2018.

<sup>4</sup> There are 11 suburbs in the postcode 6163, three of which are in the City of Fremantle. Therefore only a proportion of the solar installations in postcode 6163 were used in these calculations.

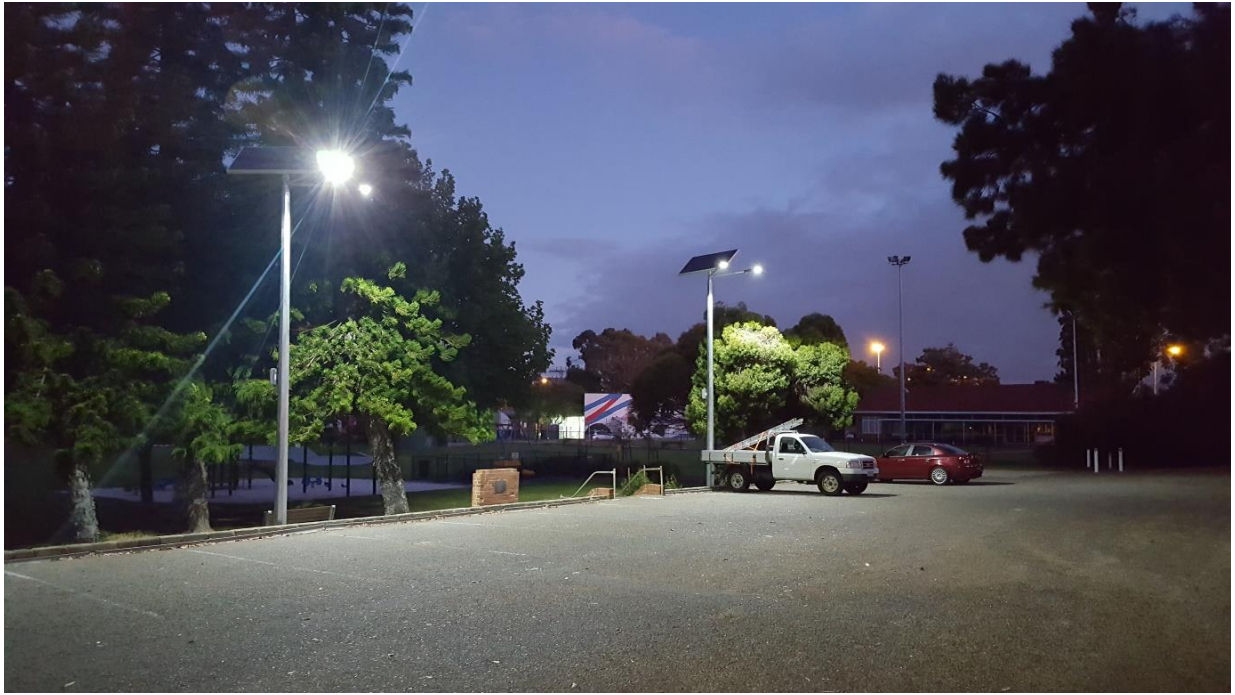
## ADDITIONAL PROJECTS AND ACTIONS

ACTION	DESCRIPTION
<b>Support for White Gum Valley (WGV) Project</b>	LandCorp's WGV at White Gum Valley project was launched in June 2017 securing the title of being Western Australia's first residential development to achieve international endorsement through the sustainability initiative One Planet Living. WGV features cutting edge energy, water and climate-responsive design, an innovative house design for Gen Y home buyers and an open source website to share the lessons of resource efficient building. The use of smart design and renewable technologies at WGV looks to reduce household bills by \$1,200 per year and aims to achieve a 60-70% mains water use reduction per dwelling compared to the Perth average. The City of Fremantle is project partners in the CRC for Low Carbon Living research project that will monitor and assess the design performance, impact of technology choice and occupant behaviour on energy use and carbon emissions across the development. It will also explore the relationships between developers, local government, builders and purchasers in regards to low carbon aspirations.
<b>Support for the Beyond WGV Project</b>	The Beyond WGV (BWGV) project will investigate site specific scenarios for sustainable infill at the Knutsford Precinct (which incorporates the Knutsford and Swanbourne Structure Plan areas in the City of Fremantle). The emphasis will be upon the enabling role of distributed district scale infrastructure to deliver low carbon and resilient development particularly the possibility of community battery storage. It will be an urban planning-focussed project using multiple approaches such as accreditation, scenario planning, and community engagement to see the extent to which the community can drive the processes that can lead to decarbonizing urban developments.
<b>Support for the Smart Cities and Suburbs Project</b>	The Smart Cities and Suburbs (SCS) project is run by Curtin University and supported by the City of Fremantle. The SCS is a computational modelling exercise to examine how block chain-based peer to peer trading can optimise the use of energy, water, waste and electric vehicle transport across a large precinct. SCS is about the integration of these different areas and how a 'citizen utility' can create a truly zero carbon or even net carbon negative development.

Key projects for 2018 include:

- Plans for the new Stan Reilly car park to be totally lit using solar powered LED lighting.
- Support for the Beyond WGV and Smart Cities Project.
- Track collective community carbon emission savings through the One Million Woman app.
- Assessment of mechanisms to facilitate the installation of PV on community buildings vested in the City, where the organisation occupying the building is responsible for paying for electricity consumed on the premises.





**Figure 2 Solar powered lights at North Fremantle Bowling Club carpark**

# ZERO WASTE - CORPORATE

*Reducing waste, reusing where possible, and ultimately sending zero waste to landfill*

A proportion of the City of Fremantle's corporate and community waste is collected and transferred to the Southern Metropolitan Regional Council's (SMRC) Regional Resource Recovery Centre (RRRC) located in Canning Vale. Contents from the waste (green-topped) bin is separated into organic vs non organic, and the organic component is processed into compost used in local farming. The non-organic component goes to landfill. Contents from the recycling (yellow-topped bin) are sorted and baled at the RRRC and sold for reprocessing to make new products both in Australia and overseas. More information on these processes can be found at <http://smrc.com.au/community-information/>.

Corporate, commercial and community waste that is collected by the City that does not go to the SMRC RRRC, and cannot currently be recycled or reused, is sent to Henderson Waste Recovery Park (HWRP) for disposal. The HWRP is a regional waste disposal and recycling facility licenced to accept a range of domestic and commercial waste.

Because our corporate waste is collected in conjunction with community waste, it is difficult to measure the separate corporate waste streams. Our corporate baseline data was obtained by an audit undertaken in 2010. The 2010 figures provide a snapshot of waste information. Some facilities may generate more waste than others due to events and visitors, and the amount of waste generated may change over the course of the year. Due to financial constraints it is not possible to replicate the corporate waste audit per year. To gain an understanding of staff waste and recycling habits, in 2017 an audit of under-desk and wheelie bins was carried out in the Council Administration Building (where the majority of full time workers are located). These findings have been added under 2017 data. The findings are not representative of all council operations, however they reflect staff waste and recycling attitudes and habits.

## CITY OF FREMANTLE TARGET

*The City of Fremantle will aim to reduce its corporate waste by 25% by 2020 against an agreed baseline and increase its co-mingled recycling and organic waste diversion from landfill to at least 70% in all Council buildings and facilities by 2020.*

## INDICATOR

An annual waste audit will be conducted in the main administration building, to measure and track our goal towards a 25% reduction in corporate waste by 2025.

## BASELINE DATA (2010)

Total waste: 343 tonnes  
Waste/employee/week: 19kg

## 2025 GOAL

Total waste: equal to or less than 246 tonnes  
Waste/employee/week: 14kg

## 2017 DATA (Waste audit of Administration Centre only. See Additional Projects for methodology)

Total waste estimate per year: 122 tonnes  
Waste/employee/week: 12.8 kg/week  
Recycling rate: 80%



#### KEY PROJECT: UPGRADE TO RECYCLING CENTRE

As part of our commitment to improved services for residents, the City has rolled out improved and expanded recycling services. The upgraded recycling centre on Montreal Street has doubled in size, with more capacity for recycling metal, batteries, oil, globes, polystyrene, clothes and ewaste like TVs, computers and monitors. For the first time residents can also drop off green waste, mattresses and clean bricks, pavers and slabs. Residents are able to drop off items for recycling free of charge and as many times as they like during operating hours. The City also has a home collection service for residents aged 65 and over. Whitegoods, ewaste and mattresses to be recycled can be picked up free of charge.

The City celebrated the opening of the Recycling Centre during the National Recycling Week in November 2017, with a visit from local school children and activities including a waste recycling game, tour of the recycling centre and tree planting. An open day for residents was also held, and included free verge plants and mulch, a recycling information booth staffed by South Metropolitan Regional Council (SMRC) and City officers and free coffee.

The upgrades to the recycling centre have been highly successful, with the number of cars dropping off material tripling in the first three weeks.

#### ADDITIONAL PROJECTS AND ACTIONS

ACTION	DESCRIPTION
<b>Waste audit of main administration centre</b>	A waste audit was conducted in the council administration building over Aug/ Sept 2017, as part of the City's Coffee Cup Campaign that was run in conjunction with CitySwitch. At the time, roughly 70% of office staff were based in the council administration building. As part of the audit, all under-desk and wheelie bins were assessed and notes taken on how full the bin was, the percentage of waste/landfill/organic material, and the number of disposable coffee cups in each bin. The majority of under-desk bins were less than 10% full, which supported the move to no under-desk bins when the main administration building was relocated to Fremantle Oval in December 2017. As above, the amount of waste per employee per week was estimated at 12.8 kg/week. The majority of this waste was paper in the recycling bin. This figure is likely to be inflated compared to normal as employees were disposing of paper files in preparation for the City's office move. The findings from the survey provide a snapshot of waste stream production, staff recycling habits and single-use coffee cups within the City.
<b>Plastic Bag Reduction Local Law</b>	Council adopted the Plastic Bag Reduction Local Law in April 2017. Advertising was undertaken and seven submissions were received. The Local Law is currently on hold as the State Government has announced they are introducing a State-wide ban on single use plastic bags by July 2018. Whilst this means the local law is now redundant, the push from City of Fremantle was one of the key drivers for the State's action.
<b>Food Organics Green Organics (FOGO) trial</b>	The City is participating in a FOGO trial through the SMRC, where 7000 residents have been given three bins – one for recycling (yellow top), one for organic waste (food and garden clippings; green bin) and one for remaining waste (red bin). The trial started in October 2017 and will conclude in July 2018. The purpose of the trial is to see how successful the three bin system is – what the compost product from the green bin will look like, and whether residents will use the three bins in the correct way. Initial

ADDITIONAL PROJECTS AND ACTIONS	
	results of the trial have been better than expected. As part of the trial, the SMRC will be looking into some of the intricacies in the suburb of Fremantle, such as dealing with apartment blocks and narrow roads with limited room for three bins.
<b>Construction and demolition waste recycling program</b>	This program kicked off in early 2017. Suitable construction and demolition waste is collected by a contractor and is diverted from landfill at roughly half the cost of the levy, and graded for re-use in other projects.
<b>Verge collection - diversion from landfill</b>	In 2017, waste collected via verge collection was partially diverted from landfill for the first time. Trucks collected metal for recycling first, prior to the remainder of waste being collected. A total of 157 tonnes of steel and other recyclables were diverted from landfill.

Key projects for 2018 include:

- As part of our office relocation in late December 2017, staff have been provided with portable computers and under desk bins have been removed. These initiatives are likely to result in a reduction in use of paper and plastic bin-liners.
- Waste management review
- Guidelines and requirements for waste management in new developments
- Continuation of FOGO trial
- Preparation of Sustainable Events Policy (refer to Materials and Products – Corporate key project for explanation)



Figure 3 Opening day at the Fremantle Recycling Centre

# ZERO WASTE - COMMUNITY

*Reducing waste, reusing where possible, and ultimately sending zero waste to landfill*

A proportion of the City of Fremantle's corporate and community waste is processed at the SMRC's Regional Resource Recovery Centre. Baseline data was sourced from annual waste and landfill and recycling statistics collected by the SMRC in 2015/16. Data from Mobile Muster (phones recycled), Close the Loop (printer cartridges) and one month of data from Fremantle's Recycling Centre has been included under 2017 data. Further information from the Recycling Centre will be available in 2018.

## CITY OF FREMANTLE TARGET

*The City of Fremantle will support the community to reduce waste generation by 10% against 2015 levels by 2020, and will embark on a city-wide education campaign and waste reduction strategy by 2017 with a goal of a 70% recycling rate by 2020.*

## INDICATORS

Annual SMRC waste to landfill and recycling statistics

Annual community verge green and general waste statistics

## BASELINE DATA (2015/16)

SMRC waste generated 2015/16: 12,091 tonnes

Waste per capita<sup>5</sup>: 395kg/person/year

SMRC diversion of waste from landfill 2015/16:  
7,627 tonnes or 63%.

## 2020 GOAL

SMRC waste generated: 10,881 tonnes

SMRC diversion of waste from landfill: 70%

## 2016/17 DATA

SMRC waste generated 2016/17: 11,893 tonnes

Waste per capita<sup>6</sup>: 377kg/person/year

SMRC diversion of waste from landfill 2016/17: 7428 tonnes or 62.5%

Mobile Muster data: 46.7 kgs recycled

Close the Loop data: 70.86 kgs recycled

Recycling centre data (November 2017): 927 vehicles through; 1653 items recycled

## KEY PROJECT: CITY OF FREMANTLE WASTE MANAGEMENT STRATEGY

The City engaged Talis to prepare a Waste Management Strategy. The purpose of the Strategy is to outline the strategic direction for future waste management for the City of Fremantle that aligns with the One Planet Strategy and the SMRCs Strategic Waste Management Plan. The Strategy outlines the City's current waste management system, WA Waste Strategy, the City's current performance, future waste diversion targets and strategies.

Data generated for the report is based on all volumes for the City of Fremantle, including:

- Domestic kerbside: refuse and recyclables
- Domestic vergeside: hard waste and green waste

<sup>5</sup> Based on population estimate of 30,572 from <https://forecast.id.com.au/fremantle/population-households-dwellings>

<sup>6</sup> Based on population estimate of 31,568 from <https://forecast.id.com.au/fremantle/population-households-dwellings>

- Drop off: hard waste and recyclables
- Public space: refuse and recyclables
- Commercial: refuse and recyclables

A total of 18,066 tonnes (combined domestic and commercial waste) was received in 2016/17, with 7,807 tonnes recycled through the SMRC RRRC and 10,259 tonnes sent to HWRP for disposal. Total domestic waste was 14,524 tonnes, with 7,662 tonnes recycled and 6,862 tonnes sent to HWRP for disposal. Total commercial waste was 3,542 tonnes, with 145 tonnes recycled and 3,397 tonnes sent to HWRP for disposal (Talis 2017).

Recovery rate is defined as the proportion of total waste generated that is recovered, either through reuse, recycling or treatment, and is therefore diverted from landfill. Based on the data from 2016/17, the City is currently achieving a diversion rate of 43% for all waste, 53% for domestic waste and 4% for commercial waste (Talis 2017).

#### ADDITIONAL PROJECTS AND ACTIONS

ACTION	DESCRIPTION
<b>Garage Sale Trail</b>	The City participated in the Garage Sale Trail for the third year in a row. The Garage Sale Trail is an Australia-wide initiative that encourages re-use and recycling practices and community interactions. The sale was run over a weekend in October 2017 with 200 sales registered in Fremantle and approximately 3,683 people participating as either a seller or a shopper. 76% of participants said that they are more conscious about waste and understand their role in reducing it, through their participation in the Garage Sale Trail. The total amount generated by sellers in the City of Fremantle was \$30,305, with \$8,226 being raised for charity. 77% of unsold items were donated to charity after the sale. Participation also led to an increase in community interactions, with roughly 3,461 interactions over the weekend.
<b>Reverse vending machine at Esplanade Park</b>	The reverse vending machine encourages people to recycle their plastic and aluminium containers. In return for recycling a container, the customer can choose one of six vouchers to local businesses. In 2017, 481 aluminium cans and 2272 PET bottles (total 2753 containers) were recycled through the reverse vending machine. The recycled PET saved enough energy to power a computer for 946.6 hours, and the recycled aluminium saved enough energy to power a TV for 1449 hours.
<b>Support for commercial recycling</b>	The City supports and encourages commercial retailers to recycle, by collecting 240L recycling bins and disposing of their contents every fortnight free of charge. The retailer must purchase their own bin, costed at \$82.

Key projects for 2018 include:

- Recycling Roadshow throughout Fremantle, including events.
- Encouraging recycling at events.
- Participation in the Garage Sale Trail





**Figure 4 Fremantle Councillors and Officers getting on board for the Garage Sale Trail.**

# TRAVEL AND TRANSPORT - CORPORATE

## *Encouraging low carbon modes of transport to reduce emissions, and reducing the need to travel*

Little data is available on staff modes of transport in 2017, as the City was unable to carry out a staff 'travel to work' survey due to other priorities around the move of our main Administration building. The travel to work survey is a priority for 2018.

### CITY OF FREMANTLE TARGET

*The City of Fremantle will increase staff sustainable transport use by 15% by June 2016 and 30% by 2020, from a 2010 baseline. The City will also reduce corporate transport emissions by at least 30% by 2020, from a 2010 baseline.*

### INDICATORS

- Travel to work survey (to be undertaken in 2018)
- Staff use of smartriders for business meetings
- Fleet fuel consumption

### BASELINE DATA

A 2010 workplace survey found that:

- 79% of people drove to work
- 6% drove a Council car
- 2% were a passenger
- 8% took public transport
- 5% walked or cycled

### 2020 GOAL

- 73% car use
- 27% sustainable transport (car as passenger, public transport, walking and cycling)

### 2017 DATA

Our staff smart riders (public transport cards) were borrowed 57 times, equating to roughly 114 trips on public transport for business meetings.

An estimate of the City's fuel consumption was provided in the City's Corporate Energy Plan (JBA 2017). The fuel data is a combination of reports through the fuel card system from the provider (BP) and depot fuel consumption figures. Estimated fuel consumption and emissions for the year 2016/17 was 118,911 litres and 315,193kg CO<sub>2</sub>e/year.

### KEY PROJECT: SUSTAINABLE CORPORATE TRANSPORT MANAGEMENT – ACTIONS OUTLINED IN CORPORATE ENERGY PLAN

In 2017 the City engaged consultants to prepare a Corporate Energy Plan (see Zero Carbon Energy for more details). The Plan included a specific management action around Sustainable Corporate Transport, the objective of which was to encourage the City to move to low emissions fleet vehicles and encourage alternative transport options. Key recommendations outlined in the management action include:

- Set targets for fleet emissions intensity. Recommended target is the Climate Change Authority 2025 Target of 105gCO<sub>2</sub>e/km for the City's light vehicle fleet.
- Create a regular reporting schedule so that progress towards the target can be tracked. Progress could be tracked in annual energy reports with a short section on fleet fuel and emissions.
- Incentivise alternative transport options ie. Through recommendations on the

Department of Transport's 'Your Move' program.

- Enable electric vehicles through charging points and car park design
- Identify vehicle types that are suitable to be procured as electric vehicles over the coming years. Passenger vehicles are likely to be the earliest opportunity. Note that the City already owns two hybrid vehicles.
- Identify opportunities to reduce vehicle size
- Enable route efficiency
- Consider bio-fuels, particularly bio-diesel for heavier vehicles
- Identify opportunities to incentivise lower emission choices through the novated lease / salary sacrifice system.

Council adopted the Corporate Energy Plan in September 2017 as a document to guide further action to achieve the City's 2025 renewable energy target.

#### ADDITIONAL PROJECTS AND ACTIONS

ACTION	DESCRIPTION
<b>Fremantle Car Share Network Report</b>	<p>The City engaged Phillip Boyle &amp; Associates to prepare an options analysis paper on what a Fremantle car share network might look like. A car share program will enable Fremantle residents and businesses to have access to a car without having to commit to the purchase of one, slowing the growth of private vehicle ownership and reducing the need for households to own multiple vehicles.</p> <p>Car sharing will lead to more efficient use of street parking by allowing a large number of people to use a single vehicle. This in turn will reduce congestion and greenhouse gas emissions in line with our One Planet targets. Car sharing will also support economic growth by reducing business capital and operational expenditure on fleet vehicles for public and private organisations including the City. Car sharing can also improve social equity as people can have access to a vehicle without the need to own one.</p>
<b>'Your Move' program</b>	<p>The Department of Transport's 'Your Move' program supports switching more trips from the car to active modes (walking, cycling, public transport). This includes support for workplaces wanting to encourage active travel by their staff. The City has registered for Your Move through the website <a href="http://www.yourmove.org.au">www.yourmove.org.au</a>, enabling access to handy tools, information and support to get us moving.</p>
<b>Support for Kapuddle</b>	<p>Kapuddle is an app that connects people with similar commuting schedules to share all or part of the journey and trip cost. The City will be promoting Kapuddle to its staff.</p>

Key projects for 2018 include:

- Staff 'travel to work' survey
- Works on the Local Bicycle Plan to include missing link improvements for longer routes and connectivity near intersections.
- GPS on rubbish trucks and sweepers to improve route efficiency
- Expression of Interest to seek car share organisations interested in entering the market in Fremantle.
- Encourage behaviour change internally and possible trial of the FreeWheeler app
- Update and review of the Local Bicycle Plan

# TRAVEL AND TRANSPORT - COMMUNITY

*Encouraging low carbon modes of transport to reduce emissions, and reducing the need to travel*

Baseline data was taken from the 2011 census for the City of Fremantle. Data from the most recent census held on 9 August 2016 (see [www.censusdata.abs.gov.au](http://www.censusdata.abs.gov.au)) has been included below for the 2016/17 financial year. Note that travel to work data is only applicable to those that were employed at the time of the census, therefore it does not include unemployed people.

The City of Fremantle in conjunction with TransPerth, provides a free Central Area Transport (CAT) bus service throughout Fremantle. Two routes (red and blue) are available and the buses run every 10-15 minutes every day. The service is free and is heavily subsidised by the City of Fremantle (roughly \$700,000 per year). There has been a drop in passenger numbers from 2015 to 2017, which is attributed to lower passenger numbers on the blue CAT bus route, however 2015 was considered to be a particularly busy year.

CITY OF FREMANTLE TARGET	
<i>The City of Fremantle will encourage and enable the community to reduce emissions from transport by at least 30% by 2020 in line with the sustainable carbon footprint target.</i>	
INDICATORS	
2011 Australian Census Data CAT Bus Patronage (total numbers for the red and blue CAT bus route)	
BASELINE DATA	2020 GOAL
2011 Australia Census Data: Travel to work <ul style="list-style-type: none"> <li>53.7% of people went via car, as a driver</li> <li>3.9% went via car, as a passenger</li> <li>12.6% took public transport (train 4.1%, bus 3.6%)</li> <li>5.8% walked</li> <li>5% worked from home</li> </ul> CAT Bus Patronage (total for red and blue route) 2015: 1,013,440 passengers	<ul style="list-style-type: none"> <li>38% of people drive</li> <li>44% of people use sustainable transport</li> </ul>
2016 DATA	2017 DATA
2016 Australia Census Data: Travel to work <ul style="list-style-type: none"> <li>56.5% of people went via car, as a driver</li> <li>5.7% went via car, as a passenger</li> <li>12.6% took public transport (train 4.1%; bus 3.5%)</li> <li>4.5% walked</li> <li>5.8% worked at home</li> </ul> CAT Bus Patronage 2016: 904,239 passengers	CAT Bus Patronage 2017: 892,514



#### KEY PROJECT: LOW SPEED / SHARED AREAS CAMPAIGN TRIAL

As part of creating a friendlier, safer urban environment in the Fremantle City Centre by encouraging slower traffic speeds and sharing of space in congested areas, the City is trialling the use of alternative 'fun' transport symbols in key areas of conflict between road or path users. The idea of these symbols is to: slow traffic and encourage sharing of space in key areas of conflict, congestion, or high activity; highlight and encourage other users of the road, principle shared path or shared street; add colour and fun to transport infrastructure.

To trial this concept, five clusters of coloured symbols have been installed (a car, a bicycle and a heart) on Marine Terrace to slow traffic and encourage sharing of the road with cyclists. This section of Marine Terrace is a key link for motorists, cyclists and pedestrians moving between the city centre, Esplanade Park, the Fremantle Youth Plaza, Fishing Boat Harbour and Bathers Beach. The symbols will add further to traffic calming speed platforms already installed, by highlighting cyclist's use of this roadway and the transition between the city centre and the Esplanade Park and Fremantle Youth Plaza by using colours in the roadway. The trial will be monitored and reactions tested before installation in other areas.



Figure 5 Coloured symbols installed on Marine Terrace.

#### ADDITIONAL PROJECTS AND ACTIONS

ACTION	DESCRIPTION
TravelSmart Events	The City runs an annual suite of TravelSmart events, which includes Bike Week, Ride to Work Breakfast and Walk Over October. This year, the annual Ride to Work Day breakfast held in October attracted approximately 150 participants, compared to roughly 100 in 2016.
FreeWheeling	The City encourages residents and visitors to cycle around the City by

ADDITIONAL PROJECTS AND ACTIONS	
<b>Fremantle</b>	offering free bicycles for hire. In 2017, the bicycles were hired 263 times (note that the hire service was disrupted with the move, however customers were referred to other free bike initiatives such as Little Creatures).
<b>The Annual Bicycle Network Commuter and Recreational Rider Survey</b>	Results from 2016 have been included here as they were unavailable for the 2016 Annual Report. The Annual Bicycle Network Commuter and Recreational Rider Survey conducted in 2016 indicated that 1548 trips were recorded on Super Tuesday, a 35% increase from the year previous, whilst 6513 trips were recorded on Super Sunday, an 18% increase from the year previous.
<b>South West Group light rail project</b>	The City is a member of the South West Group, which is looking at potential alignments and funding mechanisms for light rail in the region. Murdoch to Fremantle has been identified as the best prospect along with Rockingham and Cockburn Coast to Fremantle.
<b>Heavy Rail Advocacy</b>	The State Government has committed to METRONET as a core election plank; this shows a southern passenger rail link from South Lake to Fremantle, which the City is advocating for.

Key project for 2018:

- Support for Electric Vehicle chargers in City-owned car park. Two EV bays planned for in the new carpark at Stan Reilly.

## MATERIALS AND PRODUCTS - CORPORATE

*Using materials from sustainable sources and promoting products which help people reduce consumption.*

The City's original corporate target was "The City of Fremantle will have a robust policy and process in place for assessing suppliers against local, ethical, social, economic and environmental criteria by end 2016". In 2016, our internal processes for sustainable procurement were reviewed and a procedure was developed for Environmental, Social, Sustainable and Climate Change Adaptation Procurement. In addition, documents were prepared that outline sustainability considerations for services in parks & gardens, security services, office-based services, electronic equipment, construction, cleaning and electrical, plant and equipment services. All tenders above \$150,000 are now assessed on minimum 10% sustainability criteria, and the sustainability considerations for each tender differ depending on the service provided. In 2016/17, tenders above \$150,000 accounted for 34% of the City's total expenditure. Fremantle's current sustainability requirement is exceptional, as at the time of writing no other Local Government Purchasing Policy in WA has a mandated weighting for sustainability.

As our original target has been achieved, our target has been updated to reflect the new council priority of preparing a Sustainable Events Policy.

### CITY OF FREMANTLE TARGET

*The City of Fremantle will implement its sustainable procurement procedure for assessing suppliers against local, ethical, social, economic and environmental criteria and develop a sustainable events policy to minimise the impact of events.*

### INDICATOR

Increased uptake of sustainable materials for City purchasing  
Disposable coffee cups purchased by staff per day  
Amount of paper purchased for printing per year

### BASELINE DATA

A sustainable procurement procedure was implemented in 2016, so that all tenders over \$150,000 are assessed on sustainability criteria. Our procurement team review the tenders to ensure that this occurs. The proportion of tenders that contained sustainability criteria prior to this is unknown.

### 2017 DATA

All tenders over \$150,000 include a minimum 10% sustainability component.  
Disposable coffee cup use in main administration building halved from 86 cups per day to 43 cups per day, based on roughly 190 people in the office.  
Amount of A4 paper purchased (FYE 2017): 2765 reams (500 sheets per ream)  
Amount of A3 paper purchased (FYE 2017): 110 reams (500 sheets per ream)

### KEY PROJECT: SUSTAINABLE EVENTS GUIDELINES AND CHECKLIST REVIEW

The Sustainable Events Guideline and Checklist was developed in early 2016 in response to calls from council and community to ensure that events within the City of Fremantle's boundaries are run as sustainably as possible. This includes events organised by the City, and those run by external organisers on City land. Issues raised were largely centred on the effective management of waste and recycling, predominantly for plastic and balloon waste and particularly for events staged in beachfront areas.

A review of the Sustainable Events Checklist and Guideline was carried out following the completion of a full year trial. The review included consultation with the Event Management team, feedback on the Guidelines from Bioregional and survey responses from external event organisers.

Internal feedback from City of Fremantle event organisers suggested that when running events, the City follows the sustainability principles in the Guideline where possible. Particular actions that the City carries out include:

- Provision of recycling bins in the office and at internal events
- Minimisation of single use plastics ie. Use of paper cups and plates
- No balloons or polystyrene at events
- Use of local suppliers
- Majority on-line marketing
- Provision of additional free public transport for major events
- Availability of free water (not bottled) during major events (ie. One Day and Anzac Day)

Feedback from external event organisers suggested that awareness of the Guideline and Checklist was low, however those that were aware of the documents found them useful, with one event organiser sending them to 50+ organisers involved in their event.

A key council resolution coming out of the review was the preparation of a Sustainable Events Policy. Our Materials and Products corporate target has been updated to reflect this priority.

#### ADDITIONAL PROJECTS AND ACTIONS

ACTION	DESCRIPTION
<b>Transition to a paper free workplace.</b>	In late 2017, all staff were provided with a portable computer device, enabling more flexibility in the workplace and assisting employees with reducing their paper consumption. Further efforts to reduce office paper included a series of afternoon 'tidy up' sessions, including Planet Ark's 'Friday File Fling', where officers scanned, saved and then recycled all their paper documents. The City acknowledges that it may not be feasible to be entirely paper free, but we aim to halve our paper use by 2020, from FYE 2017 levels.
<b>Coffee Cup Campaign</b>	In efforts to encourage staff to reduce their consumption of single use items, a coffee cup campaign was rolled out over several months. All staff received a reusable City of Fremantle glass keep cup and a staff competition was run where users could win a \$50 voucher to their favourite local Fremantle café for consistently using their keep cup. Posters were distributed around the office and internal messages were posted updating staff on our progress and reminding them of the campaign. An under desk bin audit was carried out, with the results indicating that six weeks into the campaign, disposable coffee cup use halved from 86 to 43 cups per day.
<b>Purchased tyres are sourced from an accredited supplier under the Green Tyre Project, set up by Tyre Stewardship Australia (TSA)</b>	Fifty-six million tyres per year are disposed of. Until recently, these tyres were stockpiled, buried or sent overseas. The Green Tyre Project ensures that used tyres are recycled into items such as new playgrounds, roads and playing fields. Fremantle only purchases from a TSA accredited tyre supplier, ensuring that all of our used tyres are responsibly disposed.



## ADDITIONAL PROJECTS AND ACTIONS

### Participation in the Western Australia Local Government Association (WALGA) reference group

Fremantle were active participants in a selected reference group that prepared WALGA's Guide to Sustainable Procurement. The guide contains five key sections:

- Defining sustainability and sustainable procurement
- Applying a sustainable procurement framework
- Sustainability and value for money
- WALGA preferred supplier sustainability rating system, and
- Other resources.

The sustainability rating system provides an assessment of four sub-criteria as part of an overall Corporate Responsibility Score:

- Environmental Management
- Community Participation and Benefits
- Ethical Leadership and Supply Chain Practices
- Workforce Practices.

The Guide was launched in October 2017.



Figure 6: Posters used in the City of Fremantle Coffee Cup Campaign

Key projects for 2018 include:

- Officers to work on combining the Access and Inclusion checklist with the Sustainability checklist to produce one simple, easy to use and understand checklist.
- A Sustainable Events Policy to be prepared and presented to council.

- An information session to be held on running events in the City. This will include, amongst other factors, an overview of sustainability considerations.
- Continue coffee cup campaign and aim to reduce use further.
- Investigate possibility of applying 10% sustainability criteria to quotes above \$20,000.
- Distribution of coffee cup posters to Responsible Cafes

## MATERIALS AND PRODUCTS - COMMUNITY

*Using materials from sustainable sources and promoting products which help people reduce consumption.*

### CITY OF FREMANTLE TARGET

*The City of Fremantle will encourage and enable the community to achieve high levels of sustainable material use through a range of activities including the opening of a community reuse store at the Fremantle Recycling Centre. The City will continue to review and update development policy to show alignment with best practice building standards.*

### INDICATORS AND BASELINE DATA (2016 & 2017)

Community indicators and baseline data have been sourced from a number of initiatives reflecting community attitudes towards using products that help to reduce consumption.

The Boomerang Bags community group makes reusable shopping bags out of recycled materials and provides them free of charge at shopping centres (see below for more detail). In 2017, 1166 bags were made.

Responsible Cafes provides customers with a discount for bringing their own reusable cup. In 2015 there were ten Responsible Cafes in Fremantle, which has increased to 43 Responsible Cafes in 2017.

### KEY PROJECT: SUPPORT FOR BOOMERANG BAGS

Boomerang Bags is a grassroots, community driven movement tackling plastic pollution at its source. Volunteers from all over Australia get together to make shopping bags made out of recycled materials (old unused material, bed sheets, curtains etc). The bags are called 'boomerang' as the idea is to use them when you forget your own re-useable bags, and return them to the shopping centre the next time you visit. The Fremantle community started up their own Boomerang Bags group in June 2017. The City is supporting the group by holding sewing sessions at the Meeting Place and One Stop Shop, assisting with advertising and providing recycled material, cotton, pins, scissors and fabric paint. In 2017, after six months of volunteer time, a total of 1166 bags were made. A 'Boomerang Bag' bin was launched at Woolworths in South Fremantle, and is now located at Romano's in Beaconsfield. The bags create a platform to up-cycle materials and work towards shifting society's throw away mentality to a more sustainable revolution of reuse.



Figure 7: Boomerang Bag bin at Woolworths

#### ADDITIONAL PROJECTS AND ACTIONS

ACTION	DESCRIPTION
<b>Responsible Cafes</b>	Responsible Cafes is an Australia-wide initiative where cafes provide a discount to customers that BYO coffee cup. Responsible Cafes was first launched in the City of Fremantle in 2015, with ten cafes signing up. In 2017, City officers engaged cafes and encouraged them to commit to the program. An additional 33 cafes signed up, resulting in a total of 43 Responsible Cafes in Fremantle. To find your closest Responsible Café, check out the map at <a href="http://www.responsiblecafes.org">www.responsiblecafes.org</a>

Key projects for 2018 include:

- Track community sustainable product use through the One Million Woman app, due to be launched in March 2018.
- Continue support for Boomerang Bags
- Establishment of a reuse shop at the Fremantle Recycling Centre.



# LOCAL AND SUSTAINABLE FOOD - CORPORATE

*Choosing low impact, local, seasonal and organic diets and reducing food waste*

## CITY OF FREMANTLE TARGET

*The City of Fremantle will ensure that 50% of food by value purchased by the council is compliant with the One Planet Strategy, Procurement Policy and Fair Trade City status by 2015 and 100% by 2020 and will support community actions to increase local and sustainable food purchase and achieve better nutrition.*

## INDICATOR

Proportion of catering sourced from local businesses.

Continue to monitor food purchasing annually.

Number of healthy food messages internally and externally to the community

## BASELINE DATA

Baseline not required as local and sustainable food purchasing is built in to Fair Trade program and our sustainable procurement procedure.

## 2017 DATA

Fremantle continues to be a recognised Fair Trade City and only fair trade tea and coffee is supplied to staff. Catering for internal events continues to be sourced from local companies.

100% of catering is sourced from local Fremantle companies, and a vegetarian option is always provided. Organic food is requested for all Councillor meals, and is provided where possible (estimated to be 60% of the time).

## KEY PROJECT: HEALTHY FOOD WORKSHOP

The City co-hosted a healthy food workshop and case study tour of Hilton Harvest, a local community garden. The workshop was run by the Heart Foundation and introduced the 'Healthy Food' component of their Healthy Active By Design Tool. Guest speakers included Dr Nick Rose, Executive Director of Sustain: The Australian Food Network, and Adjunct Professor Trevor Shilton, Director of Cardiovascular Health from the National Heart Foundation. The workshop was attended by Strategic Planners, Engagement Officers and Sustainability Officers from the City of Fremantle, and interested community members.

The objective of the Healthy Food tool is to design neighbourhoods that encourage healthy food choices through planning and design of food retail facilities and community amenities, and promote availability and accessibility to healthy food, resulting in healthier communities.

The tool is designed to highlight research-based considerations and opportunities for the delivery of Healthy Built Food Environments. It can be used when:

- Formulating policy relating to healthy built food environments
- Designing new or adapting existing neighbourhoods or places
- Promoting community awareness as to the benefits of healthy built food environments
- Considering governance arrangements for public spaces used for healthy built food environment outcomes.



**Figure 8: Key messages from the Healthy Food Workshop (photo credit: Heart Foundation)**



**Figure 9: Attendees and vegetable plots at the Hilton Harvest Community Garden**

## LOCAL AND SUSTAINABLE FOOD - COMMUNITY

*Choosing low impact, local, seasonal and organic diets and reducing food waste*

### CITY OF FREMANTLE TARGET

*The City of Fremantle will support community actions to increase local and sustainable food purchase and production, community and edible verge gardening and healthy food choices by providing access to a variety of community gardens, local food markets and local producers - and by promoting and supporting these initiatives.*

### INDICATOR

Number of households within walkable catchment of a community garden

Number of community actions supported to increase local and sustainable food purchases

### BASELINE DATA (2017)

2017: Three community gardens (FERN, Hilton Harvest and WGV) with 3561 households within a 400m walkable catchment area to these spaces.

Lifecykel Mushrooms is a sustainable business that started in Fremantle with financial assistance from the City of Fremantle. Lifecykel collects coffee grounds from local cafes and uses them to grow mushrooms. In 2017, they provided around 70kgs of mushrooms to local restaurants.

Five cooking events (including classes, courses, demonstrations and talks) were held at the Meeting Place, including Little Gourmet (for kids) and Mentally Healthy Diet: Eating for a Healthy Mind.

### KEY PROJECT: SUPPORT FOR COMMUNITY GARDENS

The Hilton Harvest Community Garden has been operating since 2009 and since then has evolved into a thriving community garden with regular events including Buds 'n' Bloom, Chook Club and Gardening with Amy or Nate, and Work for the Dole day. Since 2009, the Hilton Harvest Community Garden has received over \$25,000 in community grants and in kind support from the City of Fremantle.

The Fremantle Environment Resource Network Inc (FERN) is a community hub and garden dedicated to sustainable living. It is a place for growing and sharing healthy food, sustainable events and workshops, getting your hands dirty in the garden, creating happiness and celebrating community. Their biggest event is a weekly donation based community vegan dinner, available for anyone to join.



**Figure 10: Mayor Brad Pettitt and local ward Councillors Sam Wainwright and Hannah Fitzhardinge at the Hilton Community Garden**

#### ADDITIONAL PROJECTS AND ACTIONS

ACTION	DESCRIPTION
<b>Verge Garden Policy</b>	The City actively encourages residents to develop and maintain verge gardens to contribute to the visual appeal and function of the streetscape. The Verge Garden Policy adopted by Council in September 2017 outlines how residents can landscape their verge, and includes installation of vegetable planters and approved fruit and nut trees.

Key projects for 2018 include:

- Support for community gardens
- Implementation of the verge garden policy and verge garden preparation assistance scheme which will provide residents with verge preparation, mulch provision and plants.

## SUSTAINABLE WATER - CORPORATE

### *Using water efficiently, protecting local water resources and reducing flooding and drought*

The City's Water Conservation Strategy outlined measures for water conservation and efficiency and was implemented from 2013 to 2017. A review of the Water Conservation Strategy is currently underway. In 2017, the City became a recognised Waterwise Council (see Key Project box). As part of this accreditation, the City was required to prepare a Waterwise Council Action Plan that details our key actions for the future. To ensure consistency of data between reports, water use provided below is based on financial year data provided in our Waterwise Council Action Plan and supplied by the Water Corporation.

The results indicate that groundwater used has decreased from baseline levels. Recent works have included installation of flow meters on all bores and an audit on every irrigation system within the City. The audit has identified areas where water was being poorly used and indicated the where water savings could occur.

The increase in corporate scheme (potable) water use may be attributed to an increase in public open space and park areas, such as Cantonment Hill, which is a newly established park and landscaped area that is run off scheme water. There was an increase in water use at the Parry St Fremantle Park sports ground by 1202 kL (from 8583kL in 2015/16 to 9785 kL in 2016/17) and at the Town Hall and Administration Centre by 271 kL (from 8387kL in 2015/16 to 8658 kL in 2016/17). The main Administration Centre is being demolished in 2018 for a new building that will include improved water conservation and efficiency features.

#### CITY OF FREMANTLE TARGET

*The City of Fremantle will measure its annual water use and set targets for absolute reduction in line with best practice benchmarks or at least 50% against 2010 baseline year levels by 2020.*

#### INDICATOR

Scheme water kilolitres used per year.  
Groundwater kilolitres consumed per year.

#### BASLINE DATA (2010)

Scheme: 122,578kL  
Groundwater: 708,500kL

#### 2020 GOAL

Scheme: 61,289kL  
Groundwater: 637,538kL

#### 2015/16 DATA

Scheme: 120,004kL  
Groundwater: 683,025kL

#### 2016/17 DATA

Scheme: 128,470kL  
Groundwater: 664,946kL

#### KEY PROJECT: WATERWISE COUNCIL STATUS

In April 2017, the City of Fremantle achieved Waterwise Council Status. The Waterwise Council Program is a partnership between Water Corporation and the Department of Water and Environmental Regulation. The Program supports and encourages councils in their continuous improvement across the water cycle and adoption of water sensitive principles.

Benefits of the Waterwise Council Program include access to council and community water use data, free educational resources for the community, free online water efficiency training courses, access to funding and incentives, and opportunities to showcase sustainable water management initiatives.



To become a Waterwise Council, the City signed a Memorandum of Understanding outlining the City's commitment to the Waterwise program. Our Council water consumption was reviewed to identify the top water using buildings and grounds owned by the council, and a Waterwise Council Action Plan was prepared that outlined our council and community water efficiency goals and targets. Actions set out in the plan to maintain corporate water efficiency focused on the areas of facilities, education, monitoring, irrigation practices and landscape design. Progress towards our goals will be reported on annually to maintain our Waterwise Council Status.

At the time of writing, 25% of councils in Western Australia had achieved Waterwise Council Status (34 councils out of 138 in WA).



**Figure 11: City of Fremantle officially receiving their Waterwise Council Status**

ADDITIONAL PROJECTS AND ACTIONS	
ACTION	DESCRIPTION
<b>Water conservation measures</b>	<p>Water conservation measures included:</p> <ul style="list-style-type: none"> <li>• Irrigation audit and replacement of identified sites.</li> <li>• Installation of magnetic flow meters on bores which will be linked to and monitored via irrigation control systems.</li> <li>• Upgrades to the bore at Esplanade Park</li> <li>• Irrigation at Cantonment Hill</li> </ul>
<b>Irrigation system improvements</b>	<p>Ongoing program of replacing existing irrigation controllers with cloud based control systems. These controllers support remote notifications and function of the irrigation systems, providing increased water efficiencies.</p> <p>Other improvements included modifications of in-ground irrigation network to focus irrigation on priority areas and installation of soil moisture sensors in turf areas.</p>
<b>Water efficient maintenance practices</b>	<p>Water efficient maintenance practices included:</p> <ul style="list-style-type: none"> <li>• Turf renovation program consisting of scarifying, coring and deep slicing.</li> <li>• Applications of wetting agent.</li> <li>• Constant monitoring and adjustment to turf mowing height.</li> <li>• Soil profile amendments and deep penetrating irrigation cycles to entice deeper turf root development.</li> </ul>

Key projects for 2018 include:

- Review of the Water Conservation Strategy
- Preparation of an internal operations document for water management
- Maintenance of Waterwise status for Council and for the Leisure Centre

# SUSTAINABLE WATER - COMMUNITY

## *Using water efficiently, protecting local water resources and reducing flooding and drought*

Similar to our corporate information, our community water use provided below is based on financial year data provided in our Waterwise Council Action Plan and supplied by the Water Corporation. Our Waterwise Council Action Plan details key actions for the future in relation to our community targets. Data to date shows that our target of a 10% per capita reduction in water use from 2010 levels has been achieved ahead of schedule. Since 2010, water levels have dropped by 23.5%, from 423L per person per day to 323 L per person per day. Our community water data includes water use from both residential and industry (ie. Hospitality/construction) uses, so actual water use per capita is likely to be slightly lower. Residential water use accounts for roughly 75% of total usage.

### CITY OF FREMANTLE TARGET

*The City of Fremantle will encourage and enable the community to achieve a 10% per capita reduction in potable water use by 2020 from a 2010 baseline level.*

### INDICATORS

Scheme water kilolitres used per year  
Scheme water kilolitres used per capita per year

### BASELINE DATA (2010)

### 2020 GOAL

4,100,000 kL	138.6kL per person per year
154kL per person per year	381 L per person per day
423 L per person per day	
Population 26,582 <sup>7</sup>	

### 2015/16 DATA

### 2016/17 DATA

3,899,885 kL	3,718,948 kL
127.5kL per person per year	117.8 kL per person per year
349 L per person per day	323 kL per person per day
Population 30,572	Population 31,568

### KEY PROJECT: SUPPORT FOR WHITE GUM VALLEY SUMP TRANSFORMATION

As part of the redevelopment of the former Kim Beazley school site, the developer LandCorp approached the City with the idea to convert the sump into attractive open space – integrated into the surrounding open space and landscaping. The drainage sump was a traditional steep sided sump, surrounded by an unattractive high chain link fence.

A design workshop was held with between the developers, City officers and the community around what they would like in the landscaping and open space adjoining the. The conversion of the sump came up numerous times in the workshop and general discussion – asking for ways it could be turned into something the community could use and integrated into the other open space.

The City entered into an agreement with the developer (LandCorp) to share the cost of design and construction to convert the drainage sump into an attractive, useable space for the community.

<sup>7</sup>[http://www.censusdata.abs.gov.au/census\\_services/getproduct/census/2011/quickstat/LGA53430?opendocument&navpos=220](http://www.censusdata.abs.gov.au/census_services/getproduct/census/2011/quickstat/LGA53430?opendocument&navpos=220)

Design input was also provided from City officers. Construction of the sump finished in early 2017. The original steep sides have been graded out and storage cells are buried to store and disperse stormwater back to the groundwater table. The sump has been filled in to create a shallow basin, which has been planted with native species and landscaped with rocks and logs and includes a path with interpretive art and landscaping.



Figure 12: Sump transformation at White Gum Valley

ADDITIONAL PROJECTS AND ACTIONS	
ACTION	DESCRIPTION
<b>Verge Garden Policy</b>	The Policy encourages the development of verge gardens to contribute to visually appealing streets and provide a range of environmental benefits including improved water efficiency. The Policy was adopted by Council in September 2017.
<b>Community Bore at WGV</b>	A community bore was installed at White Gum Valley with support from the council, allowing residents to access groundwater rather than scheme water.
<b>Waterwise Irrigation Workshop</b>	A free workshop was held for residents so that they could learn about Waterwise garden watering. The workshop included demonstrations on how to set common irrigation controllers.

Key projects for 2018 include:

- Verge Gardens: Implementation of the verge garden preparation assistance scheme which will provide residents with verge preparation, mulch provision and plants.
- Review of the Water Conservation Strategy



# LAND AND NATURE - CORPORATE

## *Protecting and restoring land for the benefit of people and wildlife*

The City's actions under our Land and Nature target are heavily directed by our [Greening Fremantle: Strategy 2020](#) (previously the *Green Plan 2020*) and our newly published [Urban Forest Plan](#). These documents can be found on the City's website. Baseline data was sourced from aerial mapping that was undertaken for the City's Greening Fremantle: Strategy 2020 and the Urban Forest Plan. Due to financial constraints, it is not possible to carry out aerial mapping on an annual basis, therefore similar statistics are not available for 2017. Aerial mapping will be carried out again in 2020.

### CITY OF FREMANTLE TARGET

*The City of Fremantle will contribute to increasing levels of biodiversity and space for wildlife through measures carried out on local government owned properties or through time or financial support to an appropriate conservation groups or community initiatives.*

### INDICATORS\*

Increase in tree canopy cover.

Maintain and increase public open space to ensure at least the minimum of 3.6 hectares of public open space per 1000 residents is provided<sup>8</sup>.

Every worker and resident is within a 400m walkable distance from functional open space.

Maintain and increase where possible, support for planting/biodiversity programs.

### BASELINE DATA (2015/16)

13% Canopy Coverage

23% Green Area

13,629 Trees

Public Open Space provision = 3.5 Ha per 1000 residents

Walkable catchment gaps exist in Hilton, O'Connor, White Gum Valley, Beaconsfield and North Fremantle.

### 2017 DATA

Walkable catchment gaps in White Gum Valley, Beaconsfield and North Fremantle

In 2017, the City planted approximately 500 trees in streets and reserves and 1000 trees in natural areas. There was also a great increase in community coastal planting through the Perth NRM Coastcare program. A total of 10 community and school planting events were held across Leighton Beach, South Beach, Port Beach and Bathers Beach. 188 volunteers took part and planted over 3000 native plants.

\* The City and the community are intrinsically linked with land use and wildlife, as they both manage land and wildlife doesn't differentiate between public and private land. Therefore, our indicators and baseline data are the same for our Corporate and Community targets.

<sup>8</sup>The State Planning Policy standard is 3.36 hectares of public open space per 1000 residents

### KEY PROJECT: URBAN FOREST PLAN

The *Urban Forest Plan* is a detailed plan building on baseline data from the 2001 Green Plan review, and was adopted by Council in July 2017. It includes analysis of thermal mapping, biophysical features, population / demographics, street tree health / location and tree canopy. Based on these factors, it provides a staged tree-planting plan for the city over ten years. The plan also provides cost estimates, preferred tree species ('the right tree for the right space') and communication tools to help educate and promote tree management and planting on public and private land.

The *Urban Forest Plan* identifies current City policies that encourage the retention of mature trees on private land, with a number of these identified for review. The priority areas and green links for management and new tree planting are identified using expanded data including thermal mapping ('hot spots') topography, soil type, service location, population and demographics. This data defines the city into four areas that share similar biophysical, topographical and development features. Based on the data, the first stage priority areas are the suburbs of Samson and O'Connor.

One important recommendation in the *Plan* is to undertake a city tree survey to understand the type, health, location and maintenance required to ensure a healthy and sustainable urban forest. A survey of street trees in the city centre was completed in the 2016 / 2017 financial year.

Implementation of the *Plan* is staged over time, with cost estimates for on-going budgets and operational and project coordination (e.g. operational annual street tree planting and project road, park and streetscape upgrades) provided. The City is already working with partners such as Coastcare and Perth NRM for natural area planting projects and has completed engagement with the community and 'friends of' groups to improve how the City and community partners work together.

### ADDITIONAL PROJECTS AND ACTIONS

ACTION	DESCRIPTION
<b>Finalisation of the Port, Leighton and Mosman Park Beaches Coastal Hazard Risk Management &amp; Adaptation Plan (CHRMAP)</b>	The Our Coastal Future Port Leighton and Mosman Beaches Coastal Adaptation Plan has a 100 year planning horizon with planning intervals at 2030, 2070 and 2110. It identifies risks to coastal assets and values from the coastal processes of sea level rise, coastal erosion and accretion, and inundation. The risks are analysed to identify trigger points for decision-making and planning to implement appropriate adaptation options within recommended timeframes. The report has been adopted by Council and recommendations are to be progressed in the short term to address areas identified as being at extreme risk, these are dependent on attracting State government grant funding and cooperation by identified stakeholder organisations.

## ADDITIONAL PROJECTS AND ACTIONS

### Update and renaming of the *Green Plan 2020* to the *Greening Fremantle: Strategy 2020*.



The *Green Plan 2020* was renamed the [Greening Fremantle: Strategy 2020](#) to reflect the strategic intent of the document and better align it to other strategies. The new name recognises our partnership with Vision 2020 for the provision of quality open spaces. The document was also updated to include:

- Clarification of the canopy cover target (also updated in this document).
- Updates to projects and programs that have progressed or been completed since December 2015
- Updates to maps and graphics to match the Urban Forest Plan
- Green Link Function Map and Matrix (Appendix 1) added to clarify the main functions of the green links (pedestrian, biodiversity, linking green spaces etc).

### Street and Reserve Tree Policy

The Policy outlines how the City plants, maintains and protects trees throughout the City. It will help protect the investment made in the City's trees through the implementation of the Urban Forest Plan. The Policy was adopted by Council in September 2018.

### Low toxicity pesticide and herbicide use

The City uses an integrated weed and pest management program which aims to reduce the use of chemicals. This includes steam weeding, mechanical weed control and low toxicity chemicals combined with traditional treatments where appropriate. The steam weeding program was expanded for 2018 to include playgrounds and increase the number of yearly treatments in the suburban areas.

Key projects for 2018 include:

- White Gum Valley Pocket Park
- Application for City of Fremantle to become a Biophilic City
- Future development of redevelopment areas in North Fremantle and Beaconsfield will deliver new open space as part of the planning and subdivision process.
- Report regarding glyphosate use by Council, including advice or strategy on how to reduce use.
- Implementation of the Urban Forest Plan

## LAND AND NATURE - COMMUNITY

### *Protecting and restoring land for the benefit of people and wildlife*

Updates to the *Greening Fremantle: Strategy 2020* included an update to the canopy cover target to better reflect the intent to work towards 20% coverage by 2020. The old wording suggested that we would achieve 20% canopy coverage by 2020, however given the time it take for canopy to grow, this was not feasible. The target below has been updated to reflect the revised name and updated target in the *Greening Fremantle: Strategy 2020*.

#### CITY OF FREMANTLE TARGET

*The City of Fremantle will contribute to increasing levels of biodiversity and space for wildlife through their own strategies, guidelines and practices. The City of Fremantle will progressively increase tree planting across the city to achieve a minimum 20% canopy coverage. The City will deliver the outcomes of the Greening Strategy 2020, and develop an Urban Forest Plan by late 2017.*

#### INDICATORS, BASELINE DATA AND 2017 DATA \*

Refer to Land and Nature – Corporate

\* The City and the community are intrinsically linked with land use and wildlife, as they both manage land and wildlife doesn't differentiate between public and private land. Therefore, our indicators and baseline data are the same for our Corporate and Community targets.



Figure 13: Opening of Tuckfield Oval Parkland at Cantonment Hill

#### KEY PROJECT: CANTONMENT HILL – OPENING OF TUCKFIELD OVAL PARKLAND

Cantonment Hill is a historic site rich in Whadjuk Noongar and European history and includes important remnant bushland and the historic Signal Station and Naval Store buildings. As part of a wider master plan developed for Cantonment Hill, Stage 1 works completed in 2017 included landscaping and development of a destination play space and park land.

The parkland was designed following extensive consultation with Department of Aboriginal Affairs, Whadjuk traditional owners and local community groups and was supported through a \$2.2m grant from Lotterywest. Works included the creation of traditional and nature based play elements, BBQ's and seating, as well as upgrades to parking, pathways, lighting and signage, creating another high amenity community open space within the City of Fremantle. The new play area and landscaping overlooks the Swan River and complements the historic, cultural and natural elements of the land.

#### ADDITIONAL PROJECTS AND ACTIONS

ACTION	DESCRIPTION
<b>Formalise Friends Group Model</b>	The City undertook a community survey to gauge the level of community support for Friends of Groups in 2017. The survey provided useful information in how the community want to engage in natural areas and time they are willing to commit. The Policy and Procedure are expected to be finalised in 2018. The City continues to support friends of and other community groups by offering technical support, and providing staff and materials for community planting days in natural areas.
<b>O'Connor Pocket Park</b>	A pocket park with seating has been created in the industrial area of O'Connor, for local workers to enjoy. The development of these spaces will increase the amount of functional open space for the community and address the walkable catchment gaps in these areas
<b>Hilton Pocket Park</b>	Through community engagement with Hilton residents, including children, the City co-designed a pocket park. The park is located on a closed road reserve that was previously unused, and was completed at a community planting day in December 2017. Residents hosted a launch party in January 2018.

Key projects for 2018 include:

- White Gum Valley Pocket Park
- Funding for Coastcare Facilitator (Perth Region NRM)
- Funding for South West Group NRM facilitator
- Participation in cross-regional funded programs through South West Group NRM, including Reducing Fox Predation of Native Fauna by Better Targeting Trapping, Regional Scale Cat Owner Education, Conservation Volunteers Australia projects and volunteer skill development.
- Support for Friends Groups, community planting days, Perth NRM Coastal Facilitator including the Perth NRM Coastcare schools adopt a plot program, accessing Conservation Volunteers Australia programs.

# CULTURE AND COMMUNITY - CORPORATE

*Nurturing local identity and heritage, empowering communities and promoting a culture of sustainability*

## CITY OF FREMANTLE TARGET

*The City of Fremantle will promote an understanding of the One Planet Council program with its staff and commit to supporting community projects and targets based on increasing the number of community and / or sustainability projects and / or the level of support (financial or staff time) by 2020.*

## INDICATOR

High level of commitment to supporting arts, culture and festivals, sustainability practice and lifelong learning opportunities across a range of community facilities.

## BASELINE DATA (2017)

A calendar of activities including ongoing classes and programs or one off events and workshops are run through the Lifelong Learning program. A selection of activities held in 2017 include:

- Street x Street: Turning Neighbourhoods into Communities (10 attendees)
- The Garden Party Collective (15 attendees)
- White Gum Valley: High Density Living and Sustainability (10 attendees)
- Sustainable Walk (10 attendees)
- Small and Diverse House Bike Tour (20 attendees)
- Different ways of Living Tiny: Exploring Small & Diverse Houses in Fremantle (75 attendees)
- Playgroup time for Grandparents (average of 12 attendees per week)
- South Fremantle Playgroup (average of 12 attendees per week)

## KEY PROJECT: SUSTAINABILITY WALKABOUT

The City of Fremantle created a Sustainability Walkabout for children and/or adults. Families, schools and community members can walk together and learn about Fremantle's history, culture, ecology and sustainability. The walk starts at Esplanade Park and takes you through the harbour to Bathers Beach, the Round House and the South Mole. Information is provided on Fremantle's colonization, Noongar culture, local biodiversity and the City's One Planet Sustainability Strategy. Children's games are played to help explain climate change, natural resources and ecological footprints in easy to understand terms. The Sustainability Walkabout can be adapted to suit the target audience (adults and/or children). The walk will be run by volunteers or is available for download for self-guidance.

## ADDITIONAL PROJECTS AND ACTIONS

ACTION	DESCRIPTION
<b>Community Facilities Plan: Future Direction 2036</b>	The Community Facilities Plan: Future Direction 2036 was adopted by Council in October 2017. The purpose of the Plan is to ensure that facilities across the City of Fremantle meet community needs, today and in the future. The plan is founded on the recognition that community facilities can have a strong impact on residents' quality of life, and contribute to the quality of visitors' experience. Community facilities can facilitate and promote the adoption of



## ADDITIONAL PROJECTS AND ACTIONS

	sport and recreational activities, as well as consolidate social inclusion. They are pivotal in community wellbeing.
<b>Town Hall Conservation Works</b>	The Fremantle Town Hall was constructed in 1887. Conservation works carried out over the last two years have brought the exterior of the Town Hall back to its original splendour of a high-quality, finely-detailed stone building with a unique stucco finish – much as it looked 130 years ago when it was first unveiled. The \$3.1m works has included major structural repairs, removing of external paint, a new slate roof with improved drainage and the refurbishment of the clock, which was taken apart to be cleaned and serviced. The works have prevented further deterioration of the building, conserved the facades and tower and made them more structurally sound. The Town Hall was unveiled in May 2017, and the occasion marked with ringing of the bells, turning on the clock and a community event and talk regarding the conservation works.
<b>One Planet staff tree planting day</b>	A One Planet staff tree planting day was held in July. The day was opened by the Mayor and roughly 200 coastal dune species were planted on Bathers Beach by 20 staff volunteers.
<b>WA Sustainable Development Goals Network</b>	The City is an active member of the WA Sustainable Development Goals (SDG) Network. The Network aims to lead action on the United Nations SDGs in WA. The City is supporting the groups ARC Linkage Proposal: Integrating people and planet across scales for sustainable development. This research project will investigate the dynamics and processes of working together with universities, business, society and volunteer organisations to meet the 17 SDGs, and will include the case study of integrating One Planet Living with the SDGs.



**Figure 14 Unveiling of the Town Hall**

Key actions for 2018 include:

- Community talk planned for May 2018 to update residents on the City's progress with our One Planet Strategy.

## CULTURE AND COMMUNITY - COMMUNITY

*Nurturing local identity and heritage, empowering communities and promoting a culture of sustainability*

### CITY OF FREMANTLE TARGET

*The City of Fremantle will promote an understanding of the One Planet Council program with the community and commit to enabling at least 3000 people per year to engage in one planet related activities (10% of population) - including community and cultural events.*

### INDICATOR

High level of commitment to supporting arts, culture and festivals, sustainability practice and lifelong learning opportunities across a range of community facilities.

### BASELINE DATA (2017)

Fremantle International Street Arts Festival: 150,000 people  
 Fremantle Festival (including High Tide): 35,000 people  
 One Day in Fremantle: 15,000 people attended  
 Heritage Festival: 3000 people  
 Hidden Treasures: 4500 people  
 Living Smart Workshops: Two workshops held with a total of 55 people attending  
 One Stop Shop (November snapshot): Average of 38 people per day.

### KEY PROJECT: ONE DAY IN FREMANTLE FESTIVAL

On the 28th January 2017, the City hosted its first 'One Day in Fremantle' event. The inclusive family friendly event presented an opportunity for all Australians to come together and celebrate the multicultural diversity of our country.

The free event kicked off with a Welcome to Country, and included performances by world-class artists (John Butler, Dan Sultan and Mama Kin), a citizenship ceremony, an Aboriginal smoking ceremony, local food vans and a range of other fun arts and cultural activities. The event was considered successful, with 15 000 people attending.

Fremantle mayor Brad Pettitt said the family-friendly event was a great celebration of modern Australia. "The first One Day in Fremantle was without doubt the best event I have ever been involved in," Mayor Pettitt said. "The feeling in the crowd was just amazing, with people of all ages and backgrounds coming together to celebrate everything that is great about being Australian."

### ADDITIONAL PROJECTS AND ACTIONS

ACTION	DESCRIPTION
<b>LivingSmart workshops</b>	The City sponsors Living Smart to run sustainability workshops at discounted prices for residents. The workshops run for one night over seven consecutive weeks, and cover topics such as energy efficiency, carbon emissions, water sustainability, household products, growing vegetables, making compost and living simply. The workshops enable participants to meet other like-minded community members and discover practical ways to live a healthier lifestyle

ADDITIONAL PROJECTS AND ACTIONS	
	and live more gently on the planet. Across the two courses, 55 people attended, with 81% of participants indicating that they had made changes in the areas of water, energy and waste efficiency.
<b>Positive Ageing Program</b>	The program is designed to promote health and well-being within the over 55's community. The Positive Ageing officer works with local facilitators, community organisations and sports clubs. The program offers free short 'taster' workshops, activities and presentations. The objective is to allow older people to connect with their peers and to lower risk of social isolation. Five programs and 62 activities were run in 2017, including 27 wellbeing activities, 15 recreational, five cultural, five craft and five technology related activities. 630 people participated in the programs alone.
<b>Sustainable Housing for Artists and Creatives (SHAC)</b>	SHAC is a sustainable housing cooperative that was created as part of White Gum Valley housing development, of which the City of Fremantle was a project partner. The intention of SHAC is to establish secure and affordable housing based on sustainable and creative environmental design for artists and creatives living in the Fremantle area. SHAC officially opened in mid-2017.
<b>High Tide Festival</b>	High Tide was the first incarnation of the Fremantle biennale, a unique event, hosting the best in site-responsive art. Situated in new and found sites around the West End of Fremantle, High Tide presented local and international artists who responded to and worked with the rich landscape that is the tapestry of Fremantle. Thirty site-specific art works and performances were presented at landmark buildings and locations across the City, with the event (run in conjunction with the Fremantle Festival) attracting over 35,000 people.
<b>Workshops at the Walyalup Aboriginal Cultural Centre</b>	<p>The Walyalup Aboriginal Cultural Centre runs a program of engaging crafts, arts and language workshops to learn about culture by Nyoongar people. Throughout the year, workshops are run in conjunction with the traditional six Nyoongar seasons. Key workshops run in 2017 included:</p> <ul style="list-style-type: none"> <li>• Nyoongar art workshops with art on canvass and basket weaving.</li> <li>• Host visit by American Indian, Mary Sunbeam of the Appalachian Nation Cherokee tribe.</li> <li>• Workshops run by Ngalla Maya, a not for profit Aboriginal Organisation assisting ex offender or long term unemployed into training and employment programs eg) Construction Training Program for employment in the Construction Industry.</li> </ul>

Key projects for 2018 include:

- Update to Positive Ageing Plan
- Development of a Reconciliation Action Plan
- Feasibility study into an Aboriginal Cultural Centre



**Figure 15: Swiss street artist Felice Varini's installation Arc d'Ellipses, that stretched 800 metres down High St.**



**Figure 16 American Indian, Mary Sunbeam of the Appalachian Nation Cherokee tribe**

## EQUITY AND LOCAL ECONOMY - CORPORATE

*Creating safe, equitable places to live and work which support local prosperity and international fair trade*

### CITY OF FREMANTLE TARGET

*The City of Fremantle will provide a full package of support, training and engagement mechanisms to foster staff development by 2020 and to support equality in the workplace.*

### INDICATOR

Number of people nominated and awarded as part of the Reward and Recognition Program

### BASELINE DATA (2017)

Fremantle continues to be a recognised Fair Trade City

In 2017, 87 people were nominated and 57 people won an award as part for Reward and Recognition Program.

### KEY PROJECT: READY SET MOVE

In 2017, staff at the City of Fremantle Civic Administration Centre relocated to offices at Fremantle Oval, in preparation for the new Kings Square Development. As part of the move, People and Culture launched the Ready, Set, Move program. The program included a number of workshops such as Ready Set Move: Me, and Ready Set Move: My Team; toolkits for employees and leaders, checklists for moving, regular Tidy Friday sessions and tips on how to manage the new workspace. In preparation for moving to an activity based and paper free workplace at Kings Square, all staff were issued with new laptops or surface pros (all with touchscreens), a second screen and headsets for telephone calls. All staff were provided with training on using their new devices. The portable devices enable a more flexible workplace environment and allow staff to be more familiar with updated computer technology.

### ADDITIONAL PROJECTS AND ACTIONS

ACTION	DESCRIPTION
<b>Reward and Recognition Program</b>	The Reward and Recognition Program celebrated its first year of implementation. The Program was implemented to support and recognise the achievements of employees. Employees are nominated by other employees once every two months, and the winners are selected by a selection panel. Winners receive a \$100 voucher and are recognised via an announcement on the intranet and at the end of year function.
<b>Frontline Management Program</b>	Roll out of certified course with a focus on change leadership and supporting supervisors, team leaders and coordinators with managing change. In 2017, 22 people completed the program.
<b>Report Writing for Local Governments training</b>	The report writing course was run for all staff who prepare council reports. The course aimed to provide staff with a refresher on the correct grammar for City of Fremantle reports, and to ensure consistency between reports.
<b>Disability Awareness Training</b>	In line with the City's Access and Inclusion Strategy and as part of Disability Awareness week, disability training was offered to all staff. The training included an online component, face to face training, practical awareness training for deafness and vision impairment, mental health awareness

#### ADDITIONAL PROJECTS AND ACTIONS

	training and recruiter training for interviewing people with a disability.
--	--

Key project for 2018:

- Training, development and employment in accordance with diversity and inclusion principles at the City of Fremantle Recycling Centre.



## EQUITY AND LOCAL ECONOMY - COMMUNITY

*Creating safe, equitable places to live and work which support local prosperity and international fair trade*

### CITY OF FREMANTLE TARGET

*The City of Fremantle will continue to provide a broad range of support and incentive mechanisms to foster new and existing local business. It will support the community in its drive towards economic, environmental and social sustainability. It will provide a full package of support, training and engagement mechanisms in accordance with its Economic Development Strategy by 2020.*

### INDICATORS

Population data (Census data)

Businesses opening vs businesses closing

Vacancy rates (City of Fremantle vacancy report)

Office and retail investment (City of Fremantle development pipeline report)

### BASELINE DATA (2016)

### 2017 DATA

30,572 people living in the City

31,568 people living in the City

32,600 people working in the City

31,015 people working in the City

38,234sqm nett lettable office area

39,621 sqm nett lettable office area\*

16,568 sqm nett lettable retail area

21,191 sqm nett lettable retail area\*

9.2% retail vacancy rate

11.0% retail vacancy rate\*

### ADDITIONAL 2017 DATA

In November 2017, a walking visual audit of independent retailers was carried out on High Street and Market Street. Each shop front was counted as either 'Independent, Non-Independent or Vacant' and the below values then derived from these statistics.

High St (High St mall to Henry St)

Market St (train station to Bannister St)

Independent: 70%

Independent: 69%

Non-Independent: 17%

Non-Independent: 22%

Vacant: 13%

Vacant: 9%

\* figures at December 2017

### KEY PROJECT: FUNDING THE FREMANTLE BUSINESS IMPROVEMENT DISTRICT

The Fremantle BID was established by the City of Fremantle as an independent, not-for-profit company to work with businesses and property owners in the Fremantle CBD. The Fremantle BID is funded by the City. In 2017 Fremantle BID provided a variety of support services to its members. Some of the BID's 2017 activities are outlined below:

- Sponsored and jointly promoted Winter World 2017 on the Esplanade Reserve, bringing over 50,000 visitors into Fremantle during the slow winter months.
- Partnered with the National Hotel and St Patrick's Community Centre to conduct the second Long Table Dinner on High St, showcasing Fremantle's newly heritage listed West End. 800 people attended, while at least another 1000 visited the street to see the event and over \$85,000 was raised for St Patrick's Community Support Centre.
- Partnered with Fishing Boat Harbour Traders to host the Fremantle Fiesta, four days of fun in Fremantle around the Australia Day and One Day events, bringing 28,000 to Fremantle

(not including figures from the One Day event).

- Implemented seasonal campaigns that included school holiday “Treasure Hunt Maps”, the Spin and Win retail competitions, shop window competitions and maps which are designed to encourage people to move around the city, visit businesses and discover or rediscover Fremantle. It is estimated these activities have been enjoyed by at least 4,000 people.
- Supported members to get more involved in existing events and festivals e.g. coordinated the West End Weekender on High St as part of the Fremantle International Street Arts Festival and facilitated member involvement in The Falls Festival.
- Hosted the Anne Frank Travelling Exhibition in the Woolstores shopping centre with support. The exhibition was staffed by volunteers and built many community connections. Over 6,000 people visited the exhibition.
- Provided a range of Christmas activities to encourage a festive, retail environment. Activities included Santa in the High St Mall and a gift-wrapping service in partnership with the Fremantle Oxfam Shop (which raised \$850 for Oxfam). Also installed Christmas decorations on High St Mall and Adelaide St.
- Provided referrals to members on a range of business matters, facilitated contact with City of Fremantle officers and other stakeholders to members for specific issues including the upcoming Kings Square redevelopment.
- Liaised with the Water Corporation, ATCO Gas and the City of Fremantle to achieve better signage and access outcomes for members during pipe works which closed off numerous streets.
- Provided information on the adopted Plastic Bag Ban in member newsletters. Support of the ban by provision of purchasable Calico Bags in small numbers for members who run independent small businesses.

#### ADDITIONAL PROJECTS AND ACTIONS

ACTION	DESCRIPTION
<b>Freo Alternative</b>	<p>Fremantle’s inner city provides a diversity of housing options, however, there are fewer small housing options in Fremantle’s suburban areas. This means less choice for those households that don’t need or want large homes or would prefer to downsize and continue to live in the communities they love.</p> <p>In 2016 the first stage of the Freo Alternative therefore was about thinking big about small housing in suburban areas and generating a shared community vision on the future of housing in Fremantle. Community members established eight themes to carry forward when thinking about smaller housing.</p> <p>In 2017 stage two of Freo Alternative explored how the eight themes established in the first stage of the project can be realised through planning policy. The City is currently engaging the community on the second stage of the project to understand how our planning rules could be changed to allow for more small housing options in Fremantle’s suburban areas without compromising the things we love about our established neighbourhoods.</p> <p>The outcomes of the Freo Alternative will promote economic, environmental and social sustainability by providing an alternative small housing option in Fremantle’s suburban areas, allowing the young and old to live in the places they love. Environmental sustainability is further promoted through the proposed planning rules that prescribe a larger open space area and a deep planting zone to retain mature trees and areas for vegetation.</p> <p>In November 2017 the City won the Minister’s Award for the community engagement undertaken for the first stage of the Freo Alternative project.</p>

ADDITIONAL PROJECTS AND ACTIONS	
<b>Business development incentives</b>	This program provides support for businesses through provision of business incubation space, business development, support and mentoring services. In 2017, \$45,000 was provided to MANY v2 and fSpace
<b>Fremantle Chamber of Commerce Business Awards</b>	<p>The City sponsored the Corporate Social Responsibility and Sustainability Awards, both of which recognise the contribution local businesses make to the wider community.</p> <p>The Corporate Social Responsibility Award recognises organisations implementing policies and projects that positively impact the community and generate long-term benefits.</p> <p>The Sustainability Initiative Award recognises companies and individuals in Fremantle who have become local leaders in sustainable practises.</p>
<b>King's Square public realm upgrade</b>	Upgrading the public realm of Kings Square to recapture its importance as the central public space of a revitalise city centre is an essential component of the Kings Square Redevelopment Project. In 2017, a draft concept design was prepared for upgrading the square's public realm. The upgraded public realm will prioritise pedestrians with high quality landscaping and public amenity that will be a focus for civic and community activity. It will become the setting for the new civic, library and administration building, and the new and existing commercial buildings around the square.
<b>Wayfinding Project</b>	The City embarked on new way finding system and stage 2 of the project was completed in early 2017. The improved way finding system aimed to improve the urban realm, creating a more attractive environment for visitors, residents and workers. A key outcome of the project was to disperse visitors to emerging destinations and retail locations, offering a more diverse range of experiences, particularly in lesser known and outlying areas.
<b>Lifelong Learning Program</b>	<p>A number of programs and workshops run through the City's Lifelong Learning Program provide our community members with ongoing learning and training opportunities. A selection of workshops run in 2017 are outlined below.</p> <ul style="list-style-type: none"> <li>• The Energy Revolution (30 attendees)</li> <li>• The Buzz about Social Enterprises (10 attendees)</li> <li>• Financial Support workshops: Owning or Owing it? The ins and outs of Home Loans, All about Financial Planners, An Introduction to Share Markets (15 attendees)</li> <li>• Renter's Rights - What you need to know about being a tenant (5 attendees)</li> <li>• Jobseeker support workshops: Finding your way back into work, Kick-ass Resume Writing, Ace that Interview (10 attendees)</li> <li>• The Small Business Launch Pad (15 attendees)</li> </ul>

Key projects for 2018 include:

- Stage 2 of the Baugruppen Housing Model: development of a Baugruppen Housing Model policy.
- Review of destination marketing strategy and use of the city centre differential rate money.

## HEALTH AND HAPPINESS - CORPORATE

*Encouraging active, sociable, meaningful lives to promote good health and well being*

### CITY OF FREMANTLE TARGET

*The City of Fremantle will promote and support health and wellbeing in the workplace by providing increased access to opportunities for staff to participate in programs relevant to their needs and will monitor the success of these programs through annual productivity / days lost to sickness / wellness and wellbeing statistics. The City will undertake a survey of health and well-being needs within the organisation complete by 2016 and develop a full program of health and well-being activities and events by 2020*

### INDICATOR

Maintain or increase training opportunities  
Maintain or increase wellness opportunities

### BASELINE DATA (2015/2016)

An employee engagement survey was carried out in 2015 by Aon Hewitt. Employee engagement at the time was 57%, which is the Australia and New Zealand norm for Local Councils. Advocacy was noted as reasonably strong and there was a reasonable commitment to stay in the long term. Three employee wellness programs were run in 2016 with a total of 92 staff attending.

### 2017 DATA

Participation in fitness programs: Three programs run over 10 weeks each, including boot camp, stretch and flex and walking groups. A total of 95 people participated.  
Leisure Centre: As of December 2017, there were 32 staff using the off-peak (free) membership, and 12 staff using the half price membership. The membership offer is available to all permanent staff (roughly 300 people).  
Cancer skin care checks: 121 people participated.  
19 day work month option (see additional projects for description): 91 employees participate.  
Social club members: 50 (data from the month of December 2017)

### KEY PROJECT: HEALTH AND WELLBEING PROGRAM

The City of Fremantle recognises that the health and wellbeing of our employees is important and is committed to providing a safe, healthy and supportive environment in which to work. Each year the City offers employees the opportunity to participate in the health and wellbeing program. In 2017, staff members were offered free flu shots, cancer skin checks and the opportunity to participate in fitness classes and walking groups. Staff can access the Fremantle Leisure Centre for free during off-peak periods, or are able to purchase a membership at half price during peak period. The wellbeing program also includes the Employee Assistance Program, which gives staff members access to free and confidential counselling services.





**Figure 17: Reward and recognition winners at the staff Christmas party**

ADDITIONAL PROJECTS AND ACTIONS	
ACTION	DESCRIPTION
<b>19 Day Work Month Option</b>	Eligible full time employees have the option to work an additional 30 minutes per day, and be eligible for one day off in every four weeks, in addition to the three days off between Christmas and New Year. In 2017, 91 employees took up this option.
<b>Social Club</b>	The City has a social club for staff members. For just \$3 a fortnight, the social club subsidises offers and event for staff members and their partners. Events in 2017 included a sundowner, Halloween event, regular lunches and a Christmas celebration. In December 2017, there were 50 members of the social club.

Key projects for 2018 include:

- Continuation of Health and Wellbeing Program, Reward and Recognition, Social Club and 19 Day Work Month Option
- Corporate participation in the Virgin Pulse Global Challenge
- Investigate potential FreeWheeler trial with staff

## HEALTH AND HAPPINESS - COMMUNITY

*Encouraging active, sociable, meaningful lives to promote good health and well being*

### CITY OF FREMANTLE TARGET

*The City of Fremantle will promote and support health and wellbeing in the community by providing increased access to opportunities for community members to participate in programs relevant to their needs. The City will monitor increase in uptake of relevant health and wellbeing programs on offer through the various City and community organisations offering opportunities.*

### INDICATOR

Number of people accessing City events, facilities and programs  
WA Police crime statistics<sup>9</sup>

### BASELINE DATA (2015)

Leisure Centre – 460,000 visits  
Library – 200,000 visits and borrowings  
One Stop Shop – 40 active participants per day  
Fremantle offences FYE 2015 - 3278

### 2016 DATA

Leisure Centre – 456,000 visits  
Library – 210,000 visits and borrowings  
One Stop Shop – 40 active participants per day  
Fremantle offences FYE 2016 - 3810

### 2017 DATA

Leisure Centre – 488,660 visits; with an average of 970 members/month.  
Visitor Centre numbers Jan – September 2017: 59,496 (door count no longer available with relocation).  
Library numbers – 174,608 visitors and 146,827 borrowings (note that counting methodology has changed from previous year)  
One stop shop – 38 active participants per day (based on November average)  
Fremantle offenses FYE 2017 - 3494

### KEY PROJECT: SWITCH IT UP

In collaboration with the Fremantle Youth Advisory Council (aka the SWITCH), the City of Fremantle hosted the closing event for National Youth Week 2017 on Sunday 9 April 2017. The event was called Switch It Up and used the popular Esplanade Youth Plaza in Fremantle as a venue. This helped to optimise the exposure of the community to youth culture, as well as facilitate the engagement of young people to participate in such event. Central to the program was an integrated skateboarding competition, performances by young local musicians and circus performers, a silent disco designed and run by high school students and a youth agency, healthy food vendors, the opportunity to discuss youth issues in the Ferris Forum and engage with local youth agencies and organisations. Total participation in the event was roughly 1000 people.

<sup>9</sup> <https://www.police.wa.gov.au/Crime/CrimeStatistics#/start>. Data includes offences (including assault, burglary, graffiti, motor vehicle theft etc) from the suburb of Fremantle only.



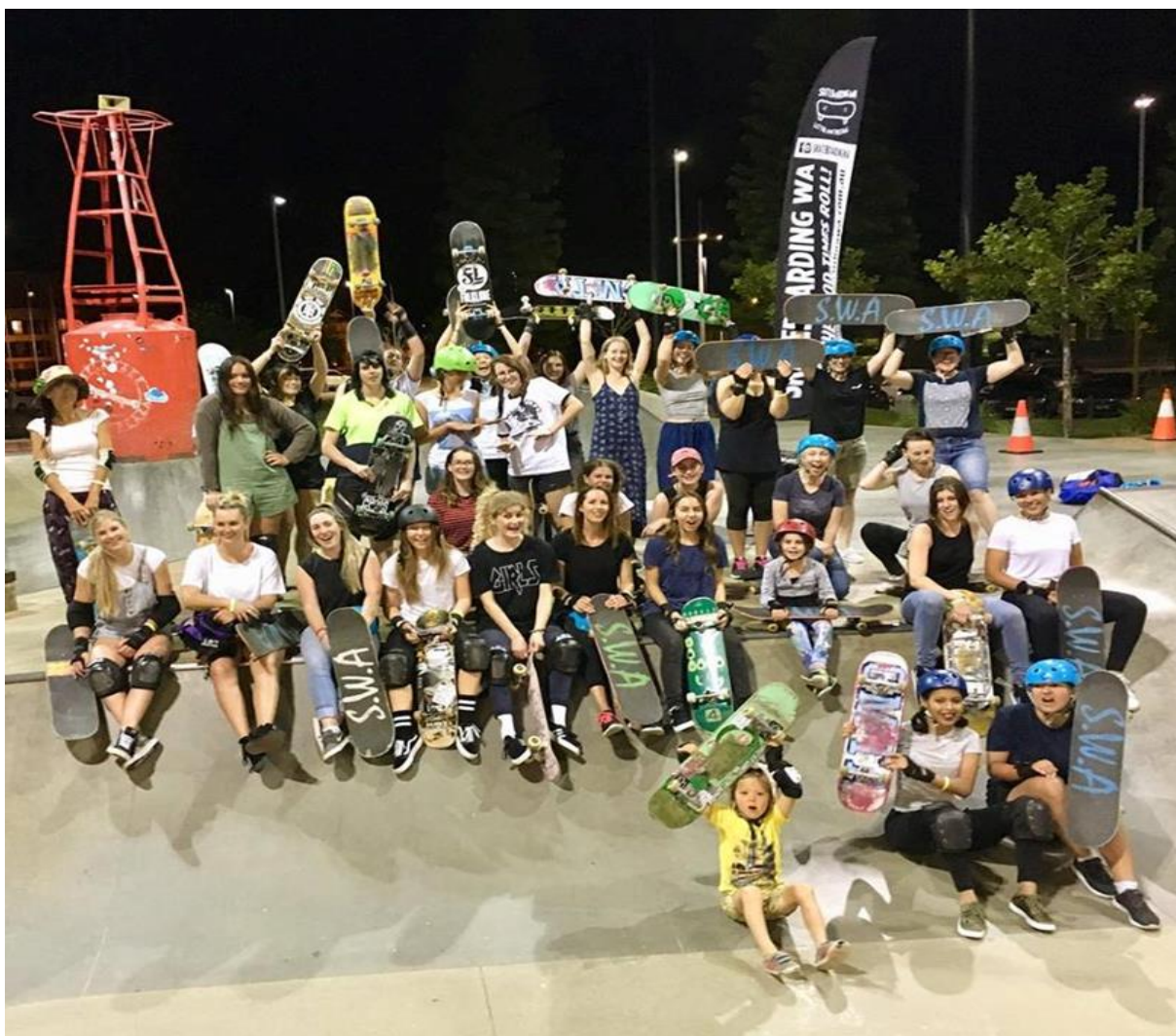


Figure 18: Girls skate clinics were a huge success!

ADDITIONAL PROJECTS AND ACTIONS	
ACTION	DESCRIPTION
<b>Support for St Patrick's Community Support Centre.</b>	Donation boxes were installed throughout the City in 2017, and the City matched any donations received. St Pat's works to help those who are homeless in Fremantle and surrounds, by providing services such as emergency relief, housing, meals, welfare, education, recreation and health. The amount raised and donated as of 23 November 2017 was \$13,861.70.
<b>Skate night sessions</b>	Working with Skateboarding WA the City introduced Skate Night Sessions at the Esplanade Youth Plaza. These nights were designed to focus on young people who utilise the park regularly to learn off other users and create a social environment. Incorporated into the sessions are coaches who help participants with certain tricks and skills and also some informal competition. The nights have been well received and extremely positive.
<b>Girls Skate Clinics</b>	Girls only skate clinics were offered every quarter in 2017, and were designed to build the skills and confidence of girls and women learning to skate. The sessions have grown in success, with over 270 people participating across the

## ADDITIONAL PROJECTS AND ACTIONS

	season.
<b>Lifelong Learning</b>	A variety of ongoing programs and classes that promote Health and Happiness are run through the Lifelong Learning Program on a weekly basis. The majority of classes are attended by 12 people on average per week. Programs include fitness classes such as pilates, dancing devas, stretch and balance, seniors badminton and ladies netball, relaxation classes such as mindfulness meditation and yoga and relaxation; or support groups including Grow Mental Health Support Group, Hearing Voices Fremantle, Speakeasy, Caring for Someone with Dementia and the Compassionate Friends of Western Australia.

Key projects for 2018 include:

- Support for the Happiness Project, run through Edith Cowan University and carried out in the City of Fremantle.
- Support for the WA Skateboarding State Championship to take place in April
- Workshops and events as part of WA Youth Week
- 25 Under 25
- Investigate using MATES in Construction for the King's Square development.

## TOP PRIORITIES FOR 2018

The One Planet Strategy includes a range of major and minor projects designed to meet our 2020 targets. The list below provides a snapshot of our priority programs and projects for 2018 for both corporate and community.

One Planet Principle	Corporate and community projects for 2018
<b>Zero Carbon Energy</b>	<ul style="list-style-type: none"> <li>Review of electricity and gas monitoring methodology and building nomenclature in Tech1 and GreensenseVIEW</li> <li>Audit of the Leisure Centre cogeneration system</li> <li>Stan Reilly car park to be lit using solar powered LEDs</li> <li>Track collective community carbon emission savings through the One Million Woman app</li> <li>Assessment of mechanisms to facilitate the installation of PV on community buildings</li> </ul>
<b>Zero Waste</b>	<ul style="list-style-type: none"> <li>Waste management review</li> <li>Guidelines and requirements for waste management in new developments</li> <li>Encourage and monitor reduction in office paper use.</li> <li>Encouraging recycling at events</li> <li>Continuation of FOGO trial</li> <li>Recycling Roadshow throughout Fremantle, including events</li> </ul>
<b>Travel and Transport</b>	<ul style="list-style-type: none"> <li>Staff 'travel to work' survey</li> <li>Update and review of the Local Bicycle Plan</li> <li>GPS on rubbish trucks and sweepers to improve route efficiency</li> <li>Expression of Interest to seek car share organisations interested in entering the market in Fremantle.</li> <li>Encourage behaviour change internally and possible trial of the FreeWheeler app</li> <li>Support for Electric Vehicle chargers in City-owned car parks. Two EV bays planned for in the new carpark at Stan Reilly.</li> </ul>
<b>Materials and Products</b>	<ul style="list-style-type: none"> <li>A Sustainable Events Policy to be prepared and presented to council.</li> <li>Combination of the Access and Inclusion checklist with the Sustainability checklist to produce one simple, easy to use and understand checklist.</li> <li>Information session on running events in the City. To include, amongst other factors, an overview of sustainability considerations.</li> <li>Continue coffee cup campaign and aim to reduce use further. Distribute coffee cup posters to Responsible Cafes</li> <li>Look at applying 10% sustainability criteria to quotes above \$20,000.</li> <li>Track community sustainable product use through the One Million Woman app</li> <li>Continue support for Boomerang Bags</li> <li>Establishment of a reuse shop at the Fremantle Recycling Centre</li> </ul>
<b>Local and Sustainable Food</b>	<ul style="list-style-type: none"> <li>Support for community gardens</li> <li>Implementation of the verge garden policy and verge garden preparation assistance scheme which will provide residents with verge preparation, mulch provision and plants.</li> </ul>

One Planet Principle	Corporate and community projects for 2018
<b>Sustainable Water</b>	<ul style="list-style-type: none"> <li>• Review of the Water Conservation Strategy</li> <li>• Preparation of an internal operations document for water management</li> <li>• Maintenance of Waterwise status for Council and for the Leisure Centre</li> </ul>
<b>Land and Nature</b>	<ul style="list-style-type: none"> <li>• White Gum Valley Pocket Park</li> <li>• Application for City of Fremantle to become a Biophilic City</li> <li>• Report regarding glyphosate use by Council, including advice or strategy to minimise use</li> <li>• Funding for Coastcare Facilitator (Perth Region NRM) and Perth NRM Coastcare schools adopt a plot program</li> <li>• Funding for South West Group NRM facilitator</li> <li>• Participation in cross-regional funded programs through South West Group NRM, including Reducing Fox Predation of Native Fauna by Better Targeting Trapping, Regional Scale Cat Owner Education, Conservation Volunteers Australia projects and volunteer skill development</li> <li>• Support for Friends Groups and community planting days</li> </ul>
<b>Culture and Community</b>	<ul style="list-style-type: none"> <li>• Community talk planned for May 2018 to update residents on the City's progress with our One Planet Strategy</li> <li>• Update to Positive Ageing Plan</li> <li>• Development of a Reconciliation Action Plan</li> <li>• Feasibility study into an Aboriginal Cultural Centre</li> </ul>
<b>Equity and Local Economy</b>	<ul style="list-style-type: none"> <li>• Training, development and employment in accordance with diversity and inclusion principles at the Recycling Centre</li> <li>• Stage 2 of the Baugruppen Housing Model: development of a Baugruppen Housing Model policy</li> <li>• Review of destination marketing strategy and use of the city centre differential rate money</li> </ul>
<b>Health and Happiness</b>	<ul style="list-style-type: none"> <li>• Continuation of Health and Wellbeing Program, Reward and Recognition, Social Club and 19 Day Work Month Option</li> <li>• Corporate participation in the Virgin Pulse Global Challenge</li> <li>• Investigate potential FreeWheeler trial with staff</li> <li>• Support for the Happiness Project, run through Edith Cowan University and carried out in the City of Fremantle.</li> <li>• Support for the WA Skateboarding State Championship</li> <li>• Workshops and events as part of WA Youth Week</li> <li>• 25 Under 25</li> <li>• Use of 'MATES in Construction' for the King's Square development</li> <li>• Continuation of the Lifelong Learning and Curious program</li> </ul>