

revealing

THE CITY OF FREMANTLE ART COLLECTION





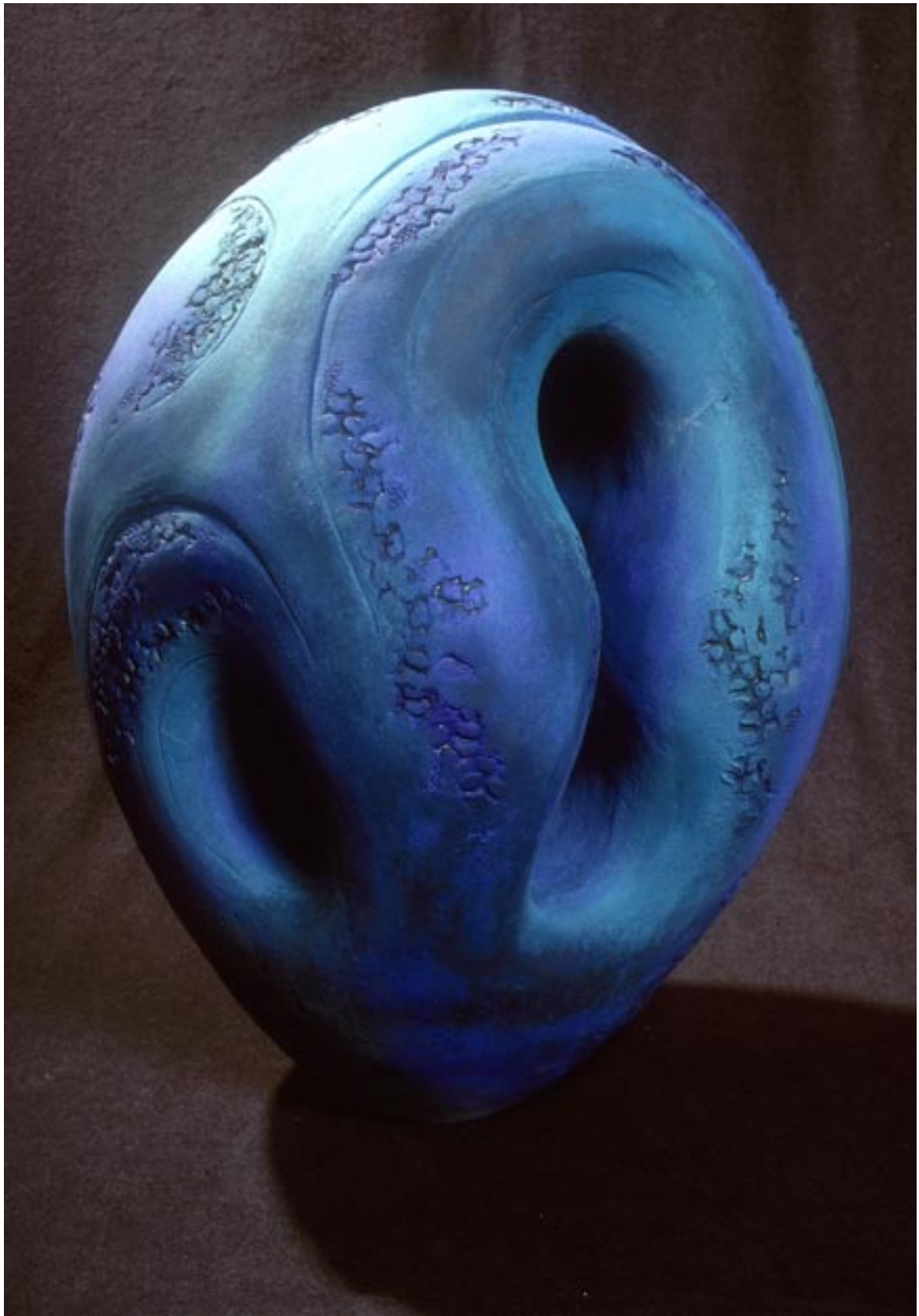
Kathleen O'Connor

(Self portrait II with hat) c1925
Oil on card on masonite
60 x 49.5cms No. 147



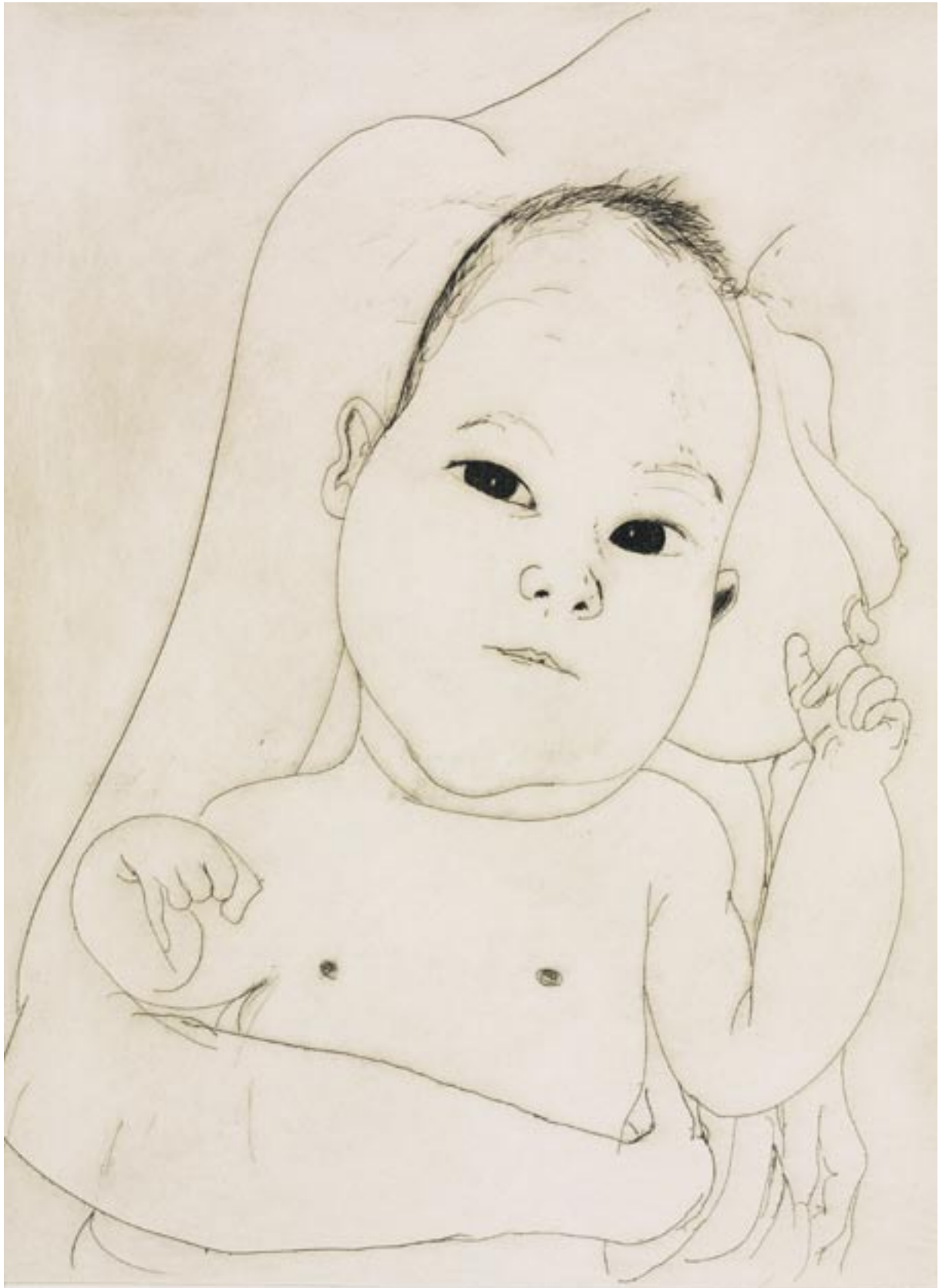
Pat Brassington

Akimbo 1997
Inkjet print
183 x 127cms No. 923



Joan Campbell

Ovoid II 1996-7
Earthenware with glazes and stains
73 x 57cms No. 967



Brett Whiteley

Mother and Child (1977)
Etching edition 57/60
60.7 x 45.2 cms No.349

revealing

HISTORY

The City of Fremantle Art Collection has developed over three decades to be one of the largest Municipal Art Collections in Australia.

Established in 1958, the collection has acquired the majority of holdings since 1973, which strongly mirror the program of the Fremantle Arts Centre. It collectively says something about Fremantle and includes paintings, prints, ceramics and photographs by Western Australian and Australian artists.

The inspiration of the City of Fremantle Art Collection is framed by many important historical donations. These include the Claude Hotchin bequest of 41 paintings in 1958, O'Connor family gift of 43 works by Kathleen O'Connor in 1978 and donation of 8 early works by the artist Akio Makigawa in 1981. A priority continues to be the acquisition of contemporary artworks which reflect place, community and the artists who live in Fremantle.

As a result, the holdings are intriguingly diverse, defined by an aim to build a unique local collection, which does not duplicate the holdings of other organisations or corporate collections and compliments the City's artworks in public places. It is not surprising that the collection contains numerous works which are about those things which attract people to the City and make Fremantle different to other urban centres in Western Australia.

Despite a number of dramatic relocations over the years, the bulk of the collection continues to be exhibited at various public sites in Fremantle and loaned to local and interstate galleries.

This brochure supports the development of new exhibition sites in the City by ensuring the availability of information to the public about the scale and quality of its holdings. The City of Fremantle Art Collection can be seen at the Fremantle Arts Centre, Fremantle Justice Building, Town Hall and City Library.



Albert Namatjira *Ghost gums in the MacDonnells, NT* undated
Watercolour 26 x 30.3cms No. 216



Gloria Bliss *Confrontation of the Waterways* 2004
Collage and acrylic paint on canvas 61 x 92cms No. 1069



Jane Martin *The Monument* 1994
Oil on board 50.5 x 60.9cms No. 905

The story goes that when Sir Claude Hotchin took it upon himself to inspire local government to value art, he drove around the state with his trailer full of exquisite paintings, distributing them to various authorities with the aim of initiating municipal art collections. Even if this is a somewhat fictitious account of the generous patron's method, the fact remains that Fremantle owes him considerable thanks because, in this community, he found fertile soil.

For many artists, inclusion in the City of Fremantle Collection was a foundation stone of outstanding careers.

Since the 1990's discerning Curators have continued growing the collection and, despite the lack of a suitable permanent gallery, found ways to bring the works to public attention. Individually, these works offer viewers an opportunity to reflect on the ideas, emotions and skill of the artists. As a whole, the Collection tells the story of its time and, in many cases, its time in Fremantle – the issues of the day, the images of the place, the style of the moment, the development of the artists. The Collection is a treasure trove of insight to the experience of living in Fremantle or Australia from the time of the Collection's inception to the present day.

The same foresight that saved the Asylum from demolition and created a groundbreaking arts centre in Fremantle, allowed the City of Fremantle Art Collection to flourish. For many years the founding Director of the Fremantle Arts Centre, Ian Templeman, nurtured the Collection. His astute purchases from the Arts Centre's exhibitions provide an excellent chronicle of 1970's and 80's Western Australian arts practice and were arguably a critical factor in establishing Fremantle as a haven for artists at that time. Having work purchased by a public collection can be a turning point in an artist's development, providing both financial gain and, more importantly, recognition of their talent.



Mary Moore *Me with my mind's eye* 1980
Charcoal, Ink, pencil 76 x 56.5 No. 100



Simona Piscioneri *From there to here* 1996
Artists book 24.5 x 28.7cms No. 949



Marcus Beilby *Portrait of the artist as a young man* 1978
Acrylic paint on canvas 51.5 x 71.5cms No. 7

revealing

HOLDINGS

Works on paper including Prints, Drawings, Watercolours and Photographs represent over 65% of the City's collection and is testimony to the strength of paper based arts practice in its own right. The key holding of prints contains over 450 works, the majority of which have been acquired since 1976 following the establishment of the Shell Fremantle Print Award and the impact in Australia of international developments in printmaking since the late 1960's. Many senior national artists are represented with suites or included in portfolio editions. Historical and traditional print holdings contrast with recent acquisitions, adding to the volume of contemporary Indigenous work, large-scale and multiple sheet installations, digital prints and artist books.



Colin Lanceley *Liebestod*
(The Miraculous Mandarin Suite) 1966
Screenprint Edition 23/70 77.7 x 56.5 No. 529
© Colin Lanceley Licensed by VISCOPY, 2005



Sandra Black *Pierced porcelain bowl* 1995
Porcelain 11.5 x 12cms No. 947
© Sandra Black Licensed by VISCOPY, 2005



Guy Grey-Smith *South of Roebourne* 1961
Oil on masonite 101.5 x 75.5 No. 51



The City of Fremantle acknowledges the assistance of Lotterywest in the production of this publication, through its Cultural Heritage – Interpretation Grants.

Revealing – The City of Fremantle Art Collection is published by City of Fremantle 2005. Contributions by Andre Lipscombe and June Moorhouse. Enquires to the Curator, City of Fremantle Art Collection, PO Box 891, Fremantle, WA, 6959. Tel 08 9432 9828 or andrel@fremantle.wa.gov.au www.freofocus.com.au - follow links to Arts and Culture.

© Copyright: Courtesy the artists, copyright holders and City of Fremantle. Every attempt has been made to gain permission to reproduce the works in this publication from the copyright owners.

The City's ceramic collection is defined by production ware and outstanding exhibition pieces, principally drawn from Fremantle Arts Centre exhibitions, studio and Artist in Residence programs. Ceramics were strongly identifiable with Fremantle in the decade 1975 -1985 with many artists living, working and exhibiting in the city. Currently there are 140 works representing Fremantle artists like Sandra Black, Joan Campbell, Bela Kotai and Jo Reid which compliment excellent examples of work by other significant Australian practitioners like Jeff Mincham, Milton Moon and Gwyn Hanssen-Pigott.

Balanced against the wealth of contemporary works on paper is Fremantle's Collection of paintings. A body of some 250 works which provides an insight into painting practice of the 1980's to present in Perth and Fremantle is underpinned by substantial historical donations of realist painting, including works by important Western Australian practitioners Kathleen O'Connor and Guy Grey-Smith. Recent acquisitions continue to recognise traditional realist genres, in particular Fremantle subjects and build upon holdings of contemporary practice with acquisitions by artists including Gloria Bliss, Shane Pickett, Trevor Richards and Jurek Wybraniec.