



# Verge Garden Guidelines

*Design revised June 2026*

*Content last revised October 2024*

[fremantle.wa.gov.au](http://fremantle.wa.gov.au)



The City of Fremantle acknowledges the Whadjuk people as the Traditional Owners of the greater Walyalup/ Fremantle area and we recognise that their cultural and heritage beliefs are still important today.

## Contents

<b>The importance of verges.....</b>	<b>5</b>
What is a verge?	5
Who is responsible for the verge?	5
Why do verge gardens matter?	6
<b>Designing your verge garden.....</b>	<b>9</b>
Utility services	9
Street trees	9
Verge gardens scheme	10
Orientation and solar aspect	10
Setbacks and sightlines	10
Accessibility	13
Waste collection	13
Be waterwise	13
Creating habitat	13
Choosing the right plants	14
Materials	20
Rules recap	22
Verge design examples	24
<b>Verge installation .....</b>	<b>27</b>
‘Step by step’	27
<b>Sketch your verge ideas!.....</b>	<b>32</b>
<b>Further information .....</b>	<b>33</b>
<b>Policy &amp; Contact.....</b>	<b>34</b>

Rev	Date	Issued for	Author	Checked
A	22.11.23	COUNCIL APPROVAL	EP + SM	RA
B	26.04.24	WEB/LAUNCH	EP + SM	RA



**Vergé gardens provide inviting spaces to sit, rest, and enjoy nature!**

## 01. The importance of verges

Welcome to the City of Fremantle Vergé Guidelines.

Transforming your vergé creates social, environmental, and economic benefits for our community. This guide is your map, offering actionable steps to create your vergé in alignment with the following City strategies:

- Greening Fremantle: Strategy 2020
- Urban Forest Plan
- Water Conservation and Efficiency Plan 2020-2025

Creating thriving verges is dependent on good design, preparation, installation and maintenance, which is why the City has created these Guidelines for residents. Together, let's create a thriving and sustainable urban environment.

### What is a vergé?

A vergé is the section of the street reserve between the property boundary and the street kerb line. While vergé's primary function is to serve as a safe corridor for the street reserve flanks, and above and below ground service utilities such as street lighting, power, water, sewerage, gas, telephone and fibre optic cables, verges can do so much more! Creating and planting well designed native, waterwise plants in Fremantle verges can bring social, environmental, and economic benefits for the community.

### Who is responsible for the vergé?

Remember to get permission from the property owner before enhancing the vergé if you're not the owner. Please note residents must reinstate vergé gardens after utility or authorised maintenance work, i.e. service upgrades.

The City is responsible for installing, maintaining, and removing street trees as required.

## Why do verge gardens matter?

The City encourages residents to be actively involved in the greening and care of their verges using waterwise, native plants to enhance liveability and amenities for the community.

Well-designed and maintained verge gardens provide many social, environmental and economic benefits for residents, neighbours, and the community. We encourage you to team up with your neighbours to increase your streets biodiversity potential and greater positive impact on the community. As verges enhance our daily lives and foster the health and wellbeing of both people and wildlife.

### Benefits include:



#### Social

- Verges contribute to creating beautiful streets
- Native plants enhance the sense of place and showcase the unique flora of your area
- Verges with places to rest, play or meet neighbours provides for social connection, contributing to health and wellbeing



#### Environmental

- Urban food production
- A place for biodiversity and native wildlife
- Landscape can clean and cool the air
- Pedestrian comfort will encourage active transport
- Storage for bins and verge waste collections
- Storage for water runoff and recharge, as well as carbon



#### Economic

- Improve property values
- Reduced energy bills through cooling the climate



**Verge gardens enhance the beauty of our neighbourhoods.**



**Verge gardens make walking more pleasant for everyone, contributing to Fremantle's sustainability efforts.**

## 02. Designing your verge garden

Designing your verge garden is an exciting venture that involves various considerations to ensure harmonious and sustainable outcomes. Here are key aspects to keep in mind.

### Utility services

Before starting any verge design or excavation, be aware of underground utility services like sewer, water, gas, communications and power lines. Ensure that your features don't obstruct access, as utility providers have rights to service, upgrade, repair etc. Contact 'Before you Dig Australia' by dialling **1100** or visit [byda.com.au](http://byda.com.au) for more details.

Also, don't forget to look up – as there may be power lines, lights, signs etc in your verge. These must be regarded in any verge landscaping. It's wise to mark them on a site plan prior to getting creative.

### Street trees

The City offers a free street tree program for residents. The City handles tree selection, installation, and maintenance, ensuring compliance with regulations and avoiding damage to underground services. Residents can request a tree through the [online form](#), for more information and advice, contact the Parks and Landscape Team at 1300 MYFREQ (1300 693 736) or email [info@fremantle.wa.gov.au](mailto:info@fremantle.wa.gov.au).

Residents are not permitted to remove, prune or plant trees, as the City undertakes maintenance via arboriculture and horticulture staff and contractors as per industry standards.

## Verge gardens scheme

Explore the City's [Verge Gardens Scheme](#) website for ongoing support and perks for your verge garden. Find practical assistance through workshops, subsidised plants, free mulch and compost info. Visit the page regularly for updates to meet the evolving needs of our community.

## Orientation and solar aspect

Consider these climatic conditions when designing your verge garden layout.

- North or west-facing verge gardens flourish with sun-loving, low-water-use natives.
- South or east-facing verge gardens will be more shaded and may require shade-tolerant species.
- Consider the wind direction, especially the afternoon Freo Doctor in our port city. Tailor your plant choices based on how your garden interacts with sea breezes.
- If you're near the coast before the first limestone ridge, ensure your verge garden includes wind and salt-tolerant species. Inland areas, which are less wind-exposed, are characterised by larger species like Tuarts and Banksias.

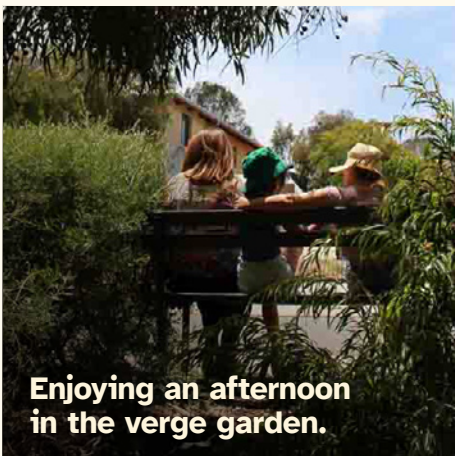
## Setbacks and sightlines

Let's make sure the verge is safe for everyone – cars, bikes, and pedestrians. Here's what to remember:

- Keep all plants and structures under 0.75m tall for clear visibility.
- Position features like raised beds 2m away from the street and 1m from the footpath for clear sightlines.
- Your plants must be planted 1m from paths and streets and don't forget to consider the mature plant size.
- If there's a street tree, maintain a 2m distance between any hard surfaces and its trunk. Be aware that important tree roots exist in the surface spaces that require sensible approach to safe guard.



**The verges gardens creates a bee highway!**



Enjoying an afternoon in the verge garden.



## Accessibility

If your street does not have a footpath on either side, ensure pedestrians have a 1m wide clear access strip along the verge adjacent to the street kerb. Use materials like mulch or acceptable hardstands. Again, keep planting holes over 1m from the street, and maintain plants to prevent encroachment. Features should be easily removable for utility access. For a larger verge, consider creating accessible maintenance paths with a trafficable surface like mulch or stepping stones for your garden.

## Waste collection

You need a spot on your verge for regular rubbish bin collection.

Place your bin 0.5m back from the street kerb ensuring the lid opens to the street. The bin area should be away from street trees to prevent tree damage. Refer to our [Waste and Recycling](#) website for additional details.

## Be waterwise

On average almost half of our household water is used on our gardens!

Before any design, think about how you plan to water the plants. If the answer is hardly ever, then choose local WA native plants that are waterwise and well suited to Fremantle's environment.

## Creating habitat

Did you know we live amidst a biodiversity hotspot?

That's why it is essential to transform your verge into a thriving sanctuary for wildlife! Introduce native plantings, mulch, habitat logs, boulders and insect hotels to nurture a robust ecosystem. Consider collaborating with neighbours to establish wildlife corridors, fostering a sense of community and enhancing environmental wellbeing.

## Choosing the right plants

### Soils

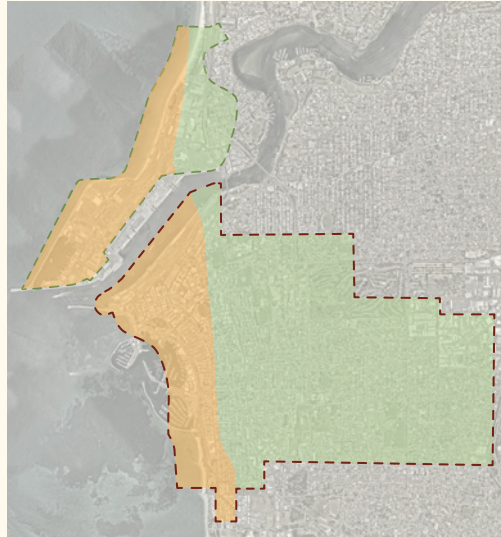
The City lies within various soil associations and vegetation complexes. It is important to choose plants which will survive and thrive in the local conditions including soil, plant zones, and exposure to sun and wind.

#### Coastal zone

Exposed to wind and salt on or before the limestone ridges/outcrops. Soils are typically sandy, rocky and alkaline. Plants must be very hardy in these conditions, and are often lower.

#### Inland zone

Less exposed to wind, behind the ridges, characterised by trees e.g. Tuarts and Banksias.



### Other factors to consider in plant selection

- Select native, waterwise and drought-tolerant options like acacias, banksias, grevilleas, and melaleucas that do well in Fremantle.
- Ensure your choices contribute to wildlife habitat, providing shelter and food sources.
- Opt for plants with varying flowering times.
- Create a diverse mix of groundcovers, strappy leaf plants, and shrubs, considering their sizes, shapes, colours, and textures.
- Factor in scents to add sensory appeal.
- Consider maintenance requirements.
- Avoid plants exceeding 0.75m in height and those with prickly, spiky, poisonous, or allergenic traits.
- Explore waterwise plant options for your area by visiting [Water Corporation](#).



Let's showcase our native plants in verge gardens, adding a sense of local identity.

## Recommended plant species

The City is encouraging the use of species well suited to its environment, promoting biodiversity, ecosystem services, and resilience to climate change. This approach reduces maintenance and enhances aesthetics. The City has compiled a list of recommended species. See our website for a full list.

### Legend

<b>WA</b> Western Australian Native	★ Star performer	● Will grow in Inland zone
<b>EA</b> Eastern Australian Native	🦋 Butterfly attracting	● Will grow in Coastal zone
<b>S</b> Salt tolerant	🐦 Bird Attracting	● Wetland plants for frog bogs
<b>L</b> Limestone tolerant		* Prostrate
		# Endemic "Cottesloe" Association

### Groundcovers

SCIENTIFIC NAME	COMMON NAME	SIZE	DESIGN NOTES
<i>Acacia lasioscarpa</i> #	Glow Wattle	0.5 x 1	WA, S, L 🦋 ● ●
<i>Adenanthos cuneatus</i>	Jugflower	0.25 x 2	WA, L ★ ● ●
<i>Banksia blechnifolia</i>	Groundcover Banksia	0.5 x 3	WA, S, L ★ 🦋 🐦 ● ●
<i>Banksia spinulosa</i>	Birthday Candles	0.5 x 1	EA, S, L 🦋 🐦 ●
<i>Billardiera fusiformis</i> #	Australian Bluebell	0.3 x 1	WA, S, L 🦋 🐦 ● ●
<i>Carpobrotus virescens</i> *#	Coastal Pigface	0.2 x 1.5	WA, S, L ★ ● ●
<i>Darwinia citriodora</i>	Lemon Scented Myrtle	0.7 x 1	WA, S, L 🦋 🐦 ● ●
<i>Enchylaena tomentosa</i>	Ruby Saltbush	0.7 x 1	WA, S, L ★ 🐦 ● ●
<i>Eremophila glabra</i> #	Kalbarri Carpet	0.2 x 2	WA, S, L ★ ● ●
<i>Grevillea crithmifolia</i> *#	Prostrate Grevillea	0.5 x 3	WA, S, L ★ 🐦 ● ●
<i>Grevillea obtusifolia</i>	Gin Gin Gem	0.5 x 3	WA, S, L ★ 🐦 ● ●
<i>Hardenbergia comptoniana</i> #	Native Wisteria	0.3 x 2	WA, S, L ★ 🦋 ● ●
<i>Hemiandra pungens</i> *#	Snakebush	0.2 x 0.7	WA, S, L 🦋 ●
<i>Hibbertia scandens</i>	Snake Vine	0.8 x 4	EA, S, L ★ 🦋 ● ●
<i>Kennedia prostrata</i> *#	Running Postman	0.5 x 3	WA 🦋 🐦 ●
<i>Melaleuca huegelii</i> *	Rambler	0.8 x 2	WA, S, L ★ 🦋 🐦 ● ●
<i>Myoporum parvifolium</i> *	Creeping Boobiala	0.3 x 2	WA, S, L ★ ● ●

## Groundcovers (flowering information)



**Acacia lasioscarpa**  
Glow Wattle  
June to November



**Adenanthos cuneatus**  
Jugflower  
All Year



**Banksia blechnifolia**  
Groundcover Banksia  
September to November



**Banksia spinulosa**  
Birthday Candles  
March to November



**Billardiera fusiformis**  
Australian Bluebell  
November to February



**Carpobrotus virescens**\*  
Coastal Pigface  
June to January



**Darwinia citriodora**  
Lemon Scented Myrtle  
June to November



**Enchylaena tomentosa**  
Ruby Saltbush  
November to March



**Eremophila glabra**  
Kalbarri Carpet  
All Year



**Grevillea crithmifolia**\*  
Prostrate Grevillea  
June to November



**Grevillea obtusifolia**  
Gin Gin Gem  
March to November



**Hardenbergia comptoniana**  
Native Wisteria  
September to November



**Hemiandra pungens**\*  
Snakebush  
December to February



**Hibbertia scandens**  
Snake Vine  
September to February



**Kennedia prostrata**\*  
Running Postman  
June to February



**Melaleuca huegelii**\*  
Rambler  
September to February



**Myoporum parvifolium**\*  
Creeping Boobiala  
September to February

## Legend

**WA** Western Australian Native ★ Star performer  
**EA** Eastern Australian Native 🦋 Butterfly attracting  
**S** Salt tolerant 🐦 Bird Attracting  
**L** Limestone tolerant

Size – Height x Width in metres

● Will grow in Inland zone  
 ● Will grow in Coastal zone  
 ● Wetland plants for frog bogs  
 \* Prostrate  
 # Endemic “Cottesloe” Association

## Strappy plants

SCIENTIFIC NAME	COMMON NAME	SIZE	DESIGN NOTES
<i>Anigozanthos viridis</i>	Green Kangaroo Paw	0.5 x 0.5	WA, S, L ●●
<i>Conostylis aculeata</i> #	Cottonhead	0.5 x 0.5	WA, S, L ★ 🐦 ●●
<i>Conostylis candicans</i> #	Grey Cottonheads	0.3 x 0.8	WA, S, L ★ 🦋 ●●
<i>Dianella 'Little Rev'</i>	Little Rev	0.4 x 0.4	WA, S, L ★ ●●
<i>Dianella revoluta</i> #	Flax Lily	0.8 x 0.4	WA, S, L ★ ●●
<i>Isolepis cernua</i>	Nodding Club Rush	0.3 x 0.3	WA, S ★ ●●●
<i>Orthrosanthus laxus</i> #	Morning Iris	0.5 x 0.5	WA, S, L ★ 🦋 ●●
<i>Patersonia occidentalis</i> #	Native Iris	0.6 x 0.3	WA, S, L ★ 🦋 ●●

## Strappy plants (flowering information)



**Anigozanthos humilis**  
Cat's Paw  
March to November



**Conostylis aculeata**  
Cottonhead  
September to October



**Conostylis candicans**  
Grey Cottonheads  
June to February



**Dianella revoluta**  
Little Rev  
September to November



**Dianella revoluta**  
Flax Lily  
September to February



**Isolepis cernua**  
Nodding Club Rush  
June to November



**Orthrosanthus laxus**  
Morning Iris  
August to November



**Patersonia occidentalis**  
Native Iris  
September to February

## Shrubs

SCIENTIFIC NAME	COMMON NAME	SIZE	DESIGN NOTES
<i>Banksia nivea</i>	Couch Honeypot	1 x 1	WA, S, L 🦋 🐦 ●●
<i>Bossiaea eriocarpa</i> #	Common Brown Pea	0.7 x 0.5	WA, S, L 🦋 🐦 ●●
<i>Calothamnus hirsutus</i>	Hairy Claw Flower	1 x 1.5	WA, S, L 🦋 🐦 ●●
<i>Eremophila nivea</i>	Silky Eremophila	1.5 x 0.5	WA, S, L ★ ●●
<i>Grevillea thelemanniana</i>	Spider Net Grevillea	1 x 3	WA 🐦 ●●
<i>Leucophyta brownii dwarf</i> #	Silver Nugget	1 x 1	WA, S, L ★ 🦋 ●●
<i>Melaleuca systena prostrate</i>	Coastal Honeymyrtle	0.5 x 1.5	WA, S, L ★ 🐦 ●●
<i>Pimelia ferruginea</i> #	Pink Rice Flower	1 x 1	WA, S, L ★ 🦋 ●●
<i>Scaevola aemula</i>	Fan Flower	0.5 x 0.8	WA, S, L ★ 🦋 🐦 ●●
<i>Scaevola crassifolia</i> #	Thick Leaf Fan Flower	1.5 x 2	WA, S, L ★

## Shrubs (flowering information)



**Banksia nivea**  
Couch Honeypot  
March to December



**Bossiaea eriocarpa**  
Common Brown Pea  
September to August



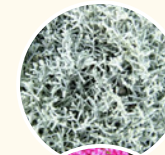
**Calothamnus hirsutus**  
Hairy Claw Flower  
October to February



**Eremophila nivea**  
Silky Eremophila  
June to February



**Grevillea thelemanniana**  
Spider Net Grevillea  
June to November



**Leucophyta brownii (dwarf)**  
Silver Nugget  
September to February



**Pimelea ferruginea**  
Pink Rice Flower  
September to November



**Melaleuca systena prostrate**  
Coastal Honeymyrtle  
September to November



**Scaevola aemula**  
Fan Flower  
All Year



**Scaevola crassifolia**  
Thick Leaved Fan Flower  
June to November

## Materials

The City encourages the use of soft landscaping on verges to improve infiltration of rain water, reduce the urban heat island effect, lower maintenance and improve streetscape aesthetics. Preferred materials include native plants, organic mulch, vegetables and herbs, planters (removable and setback). All total heights to be maximum 0.75m (see section overleaf).

### Acceptable materials

The following materials are pre-approved for installation as long as the rules (see section overleaf) are followed:

- Maintained turf.
- Garden of low plants like shrubs, groundcovers, vegetables and herbs.
- Organic mulch  
*(Best to choose a waterwise chunky one.)*
- Irrigation at ground level such as drip or spray.
- Planters and raised beds like timber vegetable planters as long as they are removable and under the height limit including their plants.
- Edging to gardens, turf and inorganic mulch.
- Social infrastructure features such as seats, benches, community libraries and toy libraries as long as they are removable.
- Fauna friendly features such as insect hotels, loose boulders, and logs that are shelter and food sources, but they must be removable.
- Play equipment features such as nature play and swings.
- Hardstands of an “acceptable material” such as trafficable paving including permeable paving, concrete, timber inlays, and/or consolidated inorganic mulch, or non-loose gravel.  
*Must be less than 1/3 of the verge area excluding the crossover with the balance being the preferred soft landscaping materials.*

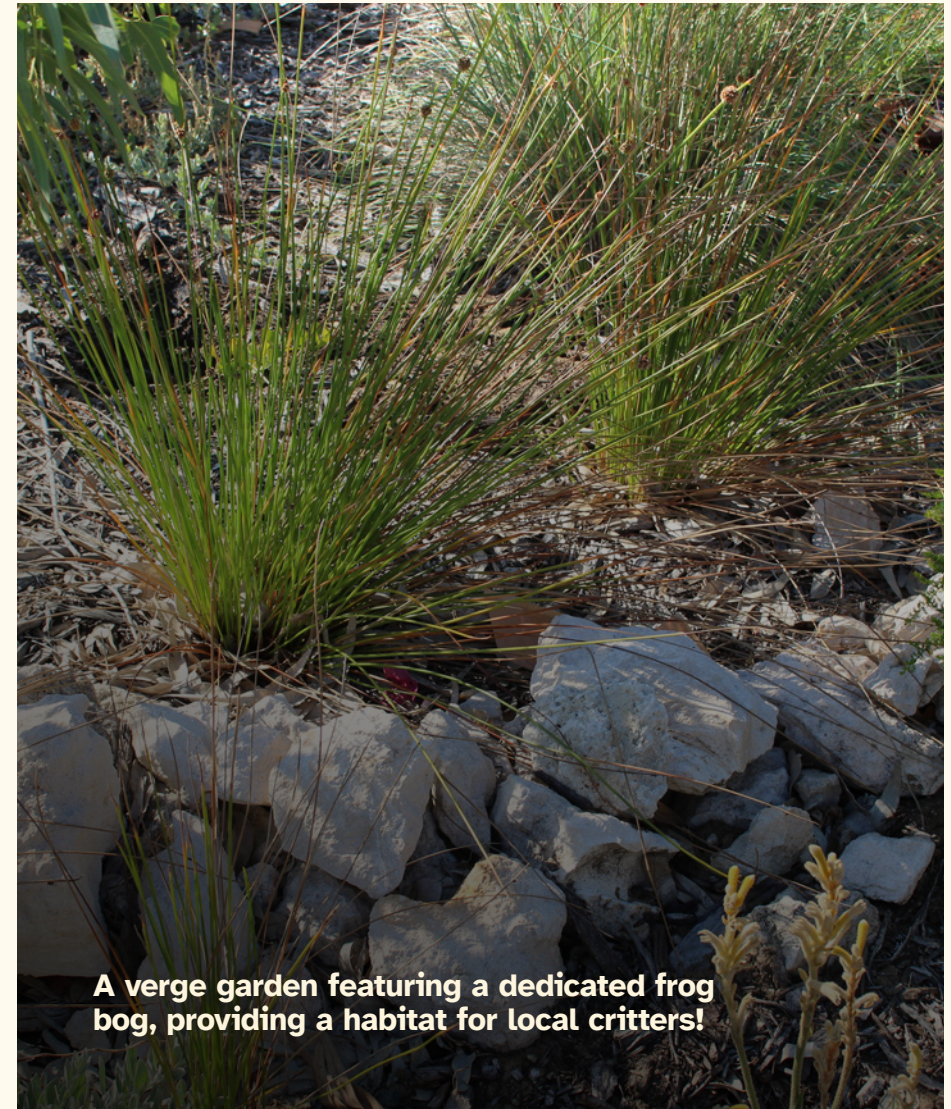
### Verge garden features

We allow the use of features, such as benches, loose boulders and logs as acceptable materials to promote the health and happiness of people and fauna in the streetscape. Common sense should guide decisions, considering factors such as usage, verge size, access, safety, sightlines, urban heat island effect, ecological and community amenity.

## Unacceptable materials

If the City deems any material or structure unsafe for the public, it will be considered an unacceptable material, and necessary actions will be taken. Unacceptable materials include those that are hazardous, block sightlines, are loose or slippery, pose a threat, are weeds, or have sharp or prickly features.

Examples of unacceptable materials are artificial turf, loose gravel, walls, rock pitching, fences, bollards, sharp items, and standing water.



**A verge garden featuring a dedicated frog bog, providing a habitat for local critters!**

## Rules recap

Approval is **NOT** required prior to any installation if the following conditions and parameters are observed:

### Heights

- Maximum height does not exceed 0.75m for any landscape feature, including plants or raised beds.
- Handstands and edging are to be flush with the ground to avoid trip hazards.
- To ensure play safety, limit the height of logs, boulders, and playground equipment to under 0.6m.

### Setbacks and sightlines

- A pedestrian refuge strip of at least 1m width along the street kerb must remain clear for foot traffic, especially if there are no footpaths on either side of the street.
- Leave a space for your bins along the kerb.
- Hard items like boulders, logs, play items and raised planters are to be located in a safe area 2m from the kerb and/or crossover, 1m from the footpath, and clear of pedestrian and vehicle sightlines.
- Planting holes are to be 1m back from verge hard edges.
- Hardstand of an “acceptable material” is to be 2m away from the trunk of a street tree to allow it to thrive.

### Ratios

No more than 1/3 of the verge excluding the crossover can be ‘acceptable material’ hardstand.

### Removable features

Features like planters, seats, boulders or logs must be removable, not permanent fixtures into the ground.

## Tree attachments on street trees

Feel free to set up a swing, be sure it won't harm our tree or cause problems for passers by. Keep an eye on it as the tree grows, use rubber tube to protect branches and ensure materials do not injure or constrict as they do expand in size. If issues pop up, make sure to fix them. You might have to take down the swing if there are still concerns.

### Design tips

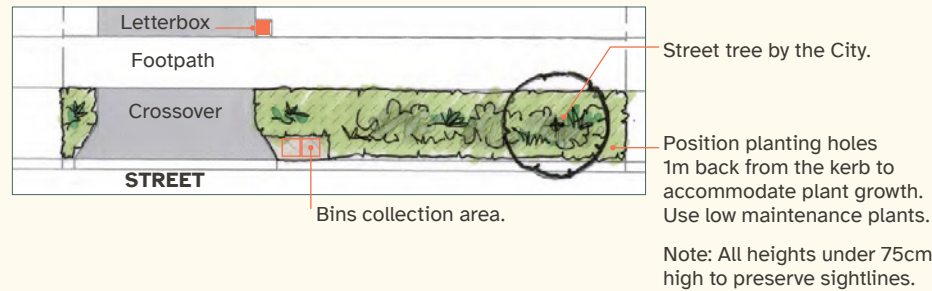
Here are some design tips for creating attractive and practical verge gardens:

- Read the Rules Recap adjacent.
- Measure your verge garden and draw up a plan.
- Calculate the area and how many materials you need.
- Consider your choice of materials e.g. native plants, organic mulch, planter boxes and vegetables.
- Offset plants from street trees (ensuring at mature growth their edge is 1m from trunks), kerbs, footpaths and driveways, allowing them room to grow and spread.
- Layered planting (groundcovers at the front with strappy plants and shrubs behind plus various colours) creates aesthetic variety and contrast.
- Flowering native plants look great and attract beneficial insects and birds.
- A mix of plant species on verges enhances biodiversity and aesthetic appeal.
- If you have a sloping verge, you may wish to use your planting and or hard features in the interior of the verge to take up some of the level change.
- Don't forget to make the most of what's available through the City's [Verge Gardens Scheme](#).

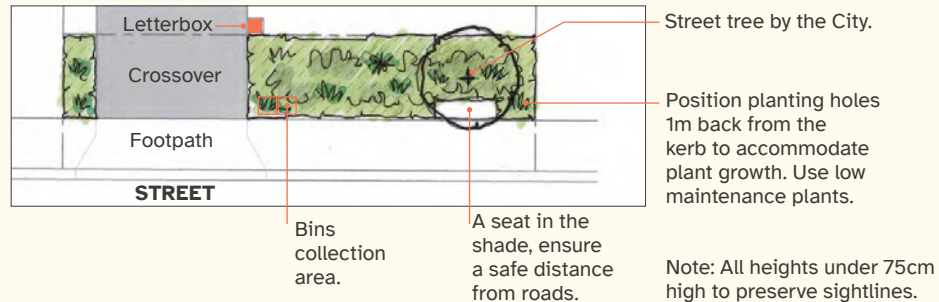
## Verge design examples

Below are examples of typical verges and how they might look when applying these guidelines. Our designs focus on layering shrubs, strappy leaves, groundcovers, boulders, and logs for visually engaging and habitat-rich places. Additionally, we integrate seating areas and vegetable planters to emphasise the importance of social connections.

### Narrow Verge



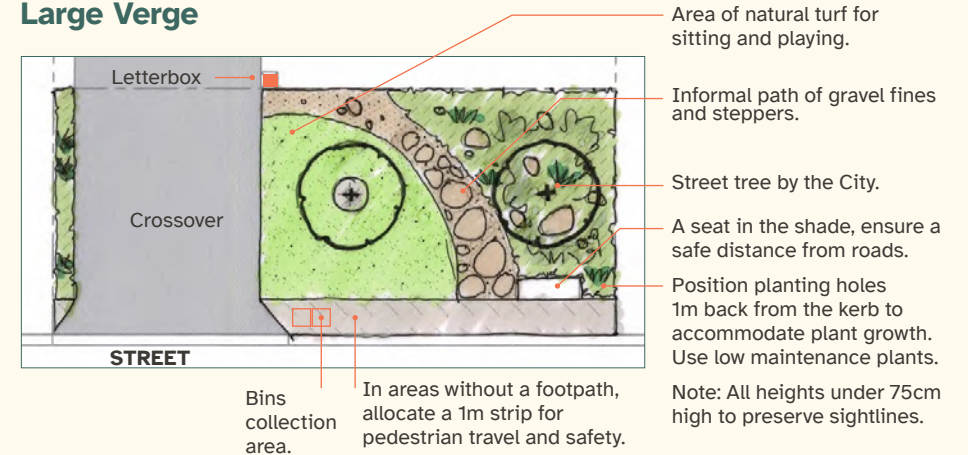
### Small Verge



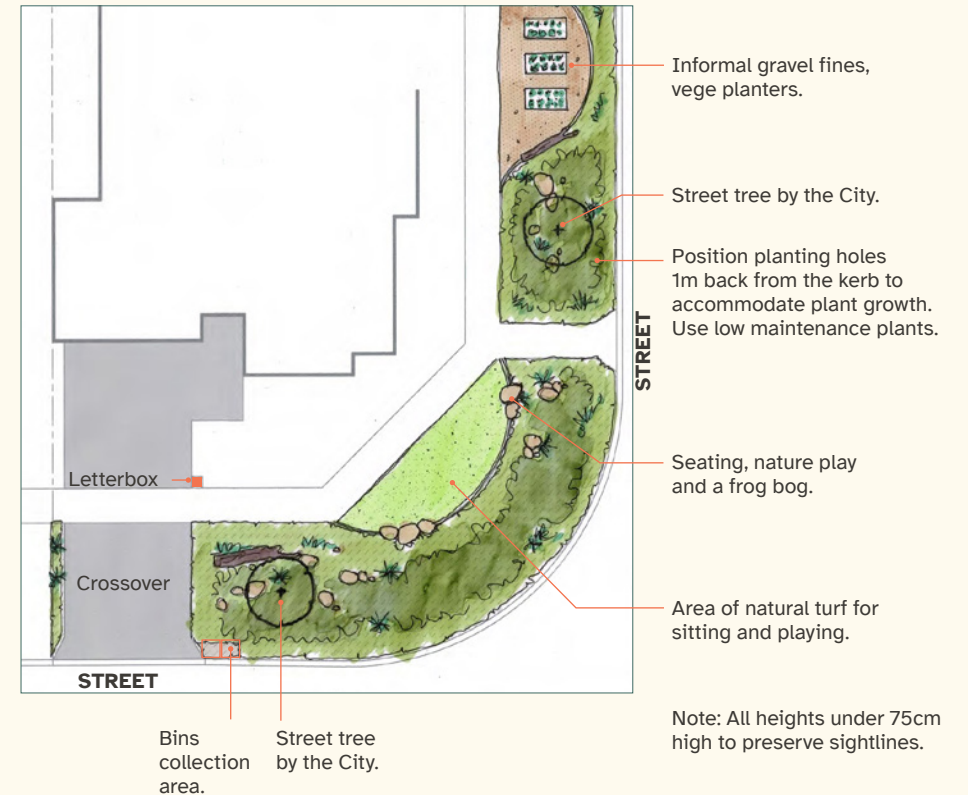
### Standard/Medium Verge



### Large Verge



### Corner Verge





## 03. Verge installation

### 'Step by step'

Follow our user-friendly guide for a seamless verge installation. Stay tuned to our website for upcoming verge workshops, and don't forget to engage with your neighbours throughout the process. Collaboration can lead to shared efforts and enhanced verges gardens.

#### Step 1: Lawn and weed removal

*Suggested time: September and October*

The City recommends removing as many weeds as possible by hand, remove existing grass with a shovel, turf cutter or steam. Some targeted herbicide applications may be required to remove difficult grasses such as couch, but generally we should all aim to minimise the use of chemicals in our approach.

Wait a few days for the grass to die, then dig it up and remove.

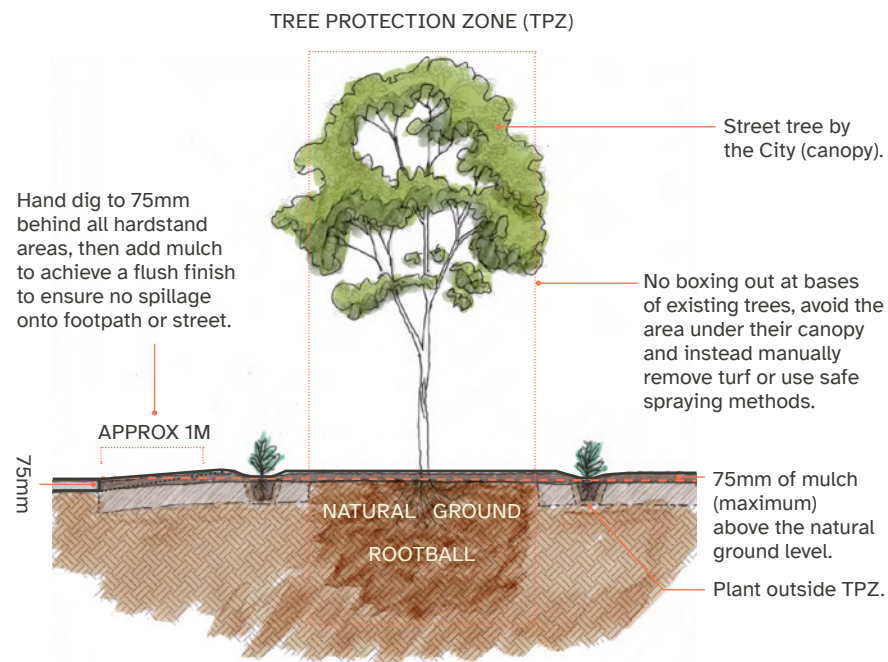


**Boxing out to the back of the kerb — refer to the detail overleaf.**

## Step 2: Boxing out and soil preparation

*Suggested time: November*

As you remove existing turf or weeds, consider lowering your topsoil level to about 75-100mm below the adjacent kerb and footpath. This ensures a flush finish with the kerb after mulching, preventing water and mulch from spilling onto the path or street and promoting better water retention within the verge.



**Boxing out to the back of kerb and tree protection detail**

If your soil appears poor, it likely is.

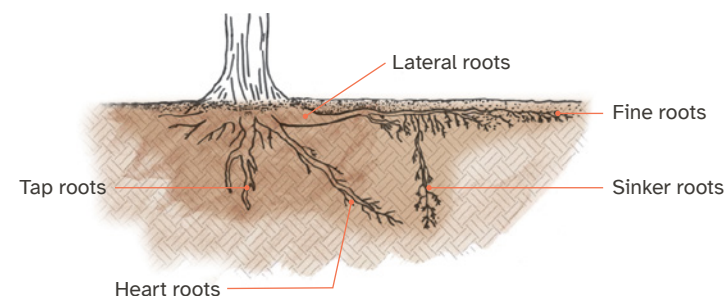
In Fremantle, many soils are sandy and hydrophobic, meaning they don't retain much moisture or nutrients. Consult your local garden center for site-specific advice. Consider enhancing your soil by manually mixing in organic compost, clay like bentonite, and soil wetting agents into the top 50mm of soil.

Choose products with [Waterwise](#) and Smart Approved WaterMark symbols, and follow the manufacturer's instructions for application rates.

## Root care for street trees

*A message from our Urban Forest Team*

To care for street trees properly, don't forget to preserve their roots, crucial for overall health. Fine roots, located mainly in the top 250-400mm of soil, absorb vital moisture, nutrients, and oxygen. They often spread beyond the canopy area.



**Tree root systems**

### Guidelines for working near trees:

- Minimise digging and soil compaction around trees and their canopy area to maintain root health.
- Use hand tools instead of machinery when working near trees and beneath their canopy to avoid damaging roots.
- Avoid harming roots, especially any larger than 40mm in diameter, as this can negatively impact the tree's overall health.

### Timing:

- Refrain from working near trees during summer, as cutting roots during this time can harm tree health.
- Provide additional water to trees during and after any root disturbance to assist in their recovery.

### Seek Assistance:

If you're uncertain about what to do regarding the trees and their roots, we're here to help. Please refer to the 'More Information' page at the back of the booklet for our contact details.

### Step 3: Irrigation

*Suggested time: December*

Ideally, your waterwise verge shouldn't need a permanent irrigation system. Once established, unirrigated dryland native plants can withstand hot, dry summers with minimal watering.

If irrigation is necessary, the Water Corporation recommends subsurface drip irrigation. For assistance, reach out to your local waterwise irrigator.

Visit Water Corporation's [website](#) for more handy tips, garden design ideas and videos on how to makeover your verge. Remember to check your designated watering days and apply for a watering exemption if your new verge garden requires extra watering.

### Step 4: Hardscapes

*Suggested time: December - February*

Now is the step to install hardscapes because your site is level, clean and prepared. This may be paving, concreting, stepping stones, edging and gravels etc. The ideal time to do any hardscaping is summer when the ground is dry and hassle-free from weeds.

### Step 5: Planting

*Suggested time: April - May*

Before digging any holes, set out your plants in their pots. Check the mature size (height and width) of your plants, allowing them room to grow to their full size without obstructing sightlines and access ways. All planting holes are to be set back 1m from streets and crossovers.

Once you dig your holes, a few granules of slow release fertiliser or concentrated improvers like clay for native plants can be added before dropping your plants in and backfilling the hole. Gently compact the soil around and then water in your new plants.

Late autumn is the best time to plant your verge as rainfall and cooler temperatures will help to establish your new garden without additional watering.

### Step 6: Mulching

*Suggested time: April - May*

Applying a waterwise mulch reduces plant stress, minimises evaporation loss, suppresses weeds, and enhances garden appearance. Place organic mulch 75mm deep (maximum), level with or below adjacent hard surfaces, 100mm from plant stems, and 0.5m from street tree trunks.

You can also lay mulch before planting to control weeds. Move the mulch away from the planting hole and dig as needed.

### Step 7: Maintenance

*Suggested Time: Ongoing*

Maintenance of verge gardens is to be undertaken by the resident.

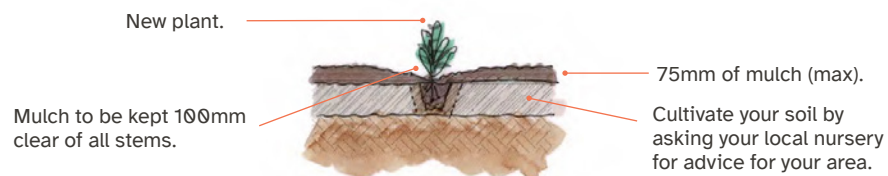
Native verge gardens should only require occasional weeding and pruning. Prune plants periodically to ensure good form, maintain sightlines and access.

Your garden may benefit from an application of slow release native plant fertiliser once a year. Mulch levels should be monitored and topped up as necessary. Supplementary weed management and supplementary planting may be required the following autumn.

Maintenance of all street trees is the responsibility of the City.

If you require assistance or have any questions, please refer to 'Further Information' at the back of the booklet for our contact details.

**Plant installation detail**



## Sketch your verge ideas!

Now you have read these guidelines use this space to sketch your verge plan.  
Suggestion: measure your verge first and use each square as 1m<sup>2</sup> when drawing.



## Further information

### Useful websites

The City encourages residents to explore our website.

[Verge Gardens Scheme](#)

[Waste and Recycling](#)

Also, explore additional resources for advice, plant species ideas, design examples, and products.

[Water Corporation Waterwise](#)

[Apac WA](#)



**Valley Verges creating community bonds through collaborative verge gardens.**

## Policy

The City has created these guidelines to bolster our *Verge Garden Policy*, intricately connected with *Greening Fremantle: Strategy 2020*, the *Urban Forest Plan*, and the *Water Conservation and Efficiency Plan 2020-2025*.

## Contact

If you're unsure about what to do, contact the City of Fremantle's **Parks and Landscape Team**.

**T** 1300 MYFREO (1300 693 736)

**E** [info@fremantle.wa.gov.au](mailto:info@fremantle.wa.gov.au)



**Let's cultivate a flourishing City of Fremantle, one verge garden at a time!**

The bees and the bobtails thank you for being a steward of our community's green legacy.



**Don't forget to make the most of what is available through the City.**



CITY OF  
**Fremantle**

**1300 MY FREO (1300 693 736)**  
**fremantle.wa.gov.au**