



City of Fremantle

City Streets Enhancement Strategy

June 2025

The City of Fremantle acknowledges the Whadjuk people as the Traditional Owners of the greater Walyalup/ Fremantle area and we recognise that their cultural and heritage beliefs are still important today.

Contents

Introduction

Organisation	5
--------------------	---

City Centre

Methodology	7
-------------------	---

Analysis

Existing Paving Inventory	8
---------------------------------	---

Multi-criteria Analysis	9
-------------------------------	---

Priority Streets

Priority Streets Overview	10
---------------------------------	----

Priority Streets Breakdown	11
----------------------------------	----

Materiality

City Centre Character Zones	12
-----------------------------------	----

Walyalup Koort	13
----------------------	----

Convict Quarter	14
-----------------------	----

City Centre General	15
---------------------------	----

Fremantle Waterfronts	16
-----------------------------	----

Renewal Standards

Paving Renewal Guide	17
----------------------------	----

Suburbs & Local Centres

Character Zones	19
-----------------------	----

Leighton Beach	20
----------------------	----

North Fremantle	21
-----------------------	----

Hilton	22
--------------	----

Wray Avenue	23
-------------------	----

South Fremantle	24
-----------------------	----

Introduction

The City Streets Enhancement Strategy addresses the need for a strategic approach to the City of Fremantle's streetscape renewal efforts.

Fremantle's city centre street network currently consists of an inconsistent patchwork of paving types and numerous footpaths that are underperforming due to structural issues such as footpath width and lack of canopy. This strategy provides a strategic framework for investment in streetscape renewal that establishes a cohesive and legible city-wide paving character and identifies opportunities to improve Fremantle's walkability through street reconfiguration.

The City Streets Enhancement Strategy acknowledges and builds upon the Paving Policy for Central Fremantle (adopted in 1999). Whilst the Paving Policy identified general paving types and construction details, it did not inform renewal programs or acknowledge places of special cultural importance that require nuanced paving treatments. This strategy provides strategic guidance on the specific streets towards which investment should be directed and provides material selections that are sensitive to context.

Although the focus of the City Streets Enhancement Strategy is on the centre centre, important local centers that require special consideration are identified throughout the greater LGA.

Key Objectives:

Standardise materials:

Identifies a limited, coordinated palette of paving materials that reinforce Fremantle's character and heritage and can be applied both through regular maintenance/replacement programs as well as special streetscape renewal projects.

Strategic prioritisation:

Provides a strategic approach to the prioritisation of paving renewal works that ensures funding is directed to projects that have the greatest positive impact for improving city character and accessibility.

Structurally problematic streets:

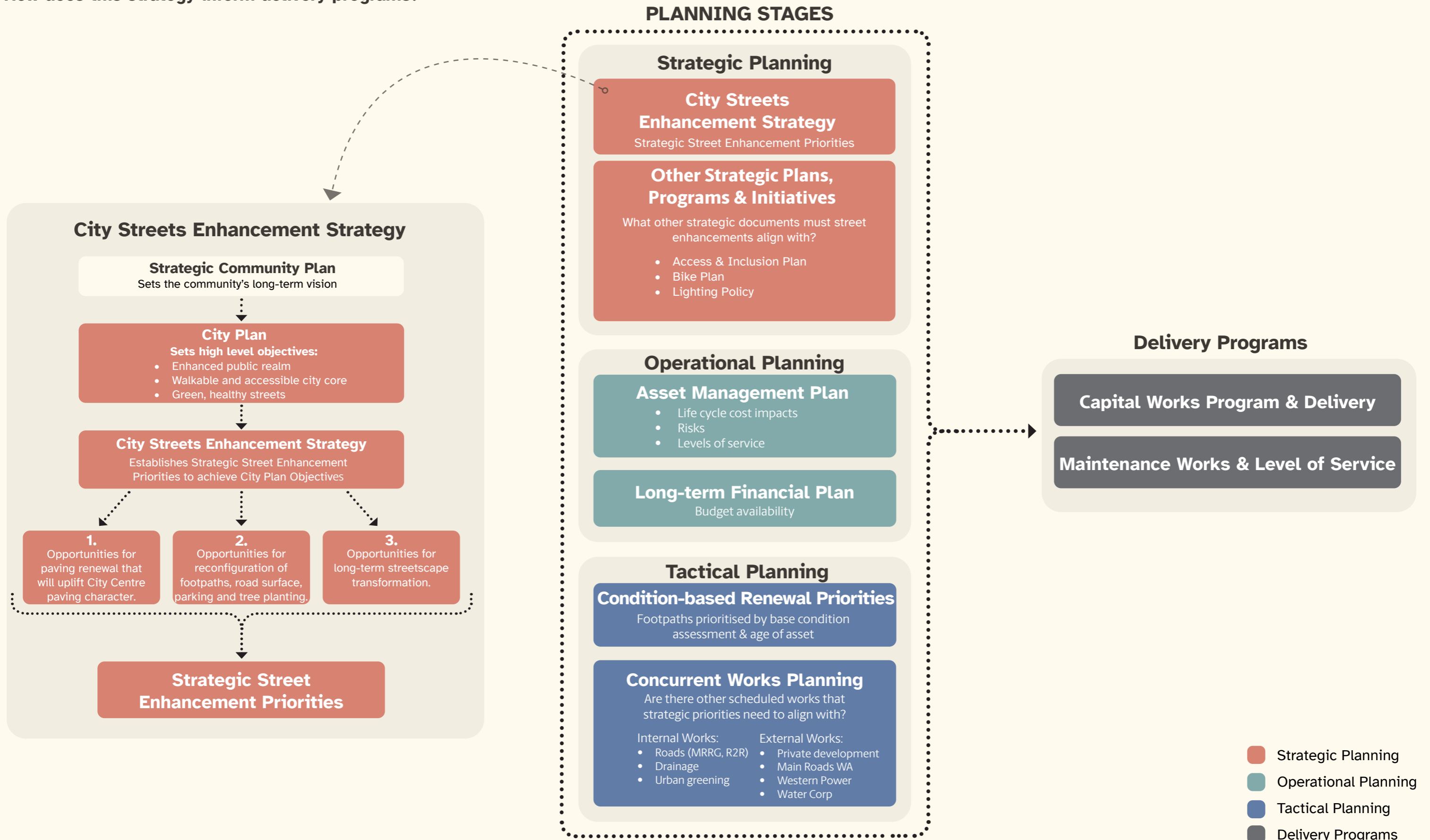
Identifies streets that are failing due to problems such as footpath width and lack of canopy that cannot be resolved through paving renewal alone, requiring more significant investment.

Responds to City Plan objectives:

Identifies long-term transformational opportunities that align with the objectives of the City Plan.

Organisation

How does this strategy inform delivery programs?



City Centre

Methodology

1. ANALYSIS

What is the condition of Fremantle's existing street network?

City Streets Mapping

- CRM, complaints, trips and falls (pure condition-based asset management)
- Multi-criteria analysis: All city centre streets are mapped against the following criteria:

Character: Is the paving type appropriate to the City Centre character?

Mobility: Is there a concentration of high-priority hazards?

Primary Walking Streets: Does the street experience a high level of foot traffic?

Development-Primed Areas: Is development planned in the immediate area that may necessitate street renewal?

Healthcare & Community: Does the street provide important connections to healthcare and community services?

Functional Failure: Is the street failing due to issues that cannot be addressed through footpath renewal alone? For example, narrow paths, pinch points, lack of canopy cover and inefficient parking arrangements necessitate additional works beyond paving uplift alone.

City Streets Network Analysis

Fremantle's City Centre street network was assessed against high level objectives outlined in the City Plan to identify transformational projects that achieve these objectives through significant changes to the City Centre street network.

2. STREET PRIORITIES

What are the strategic priorities for investment in street upgrades?

The multi-criteria analysis was used to create a long-list of street enhancement priorities, taking a balanced approach to their weighting. Typically, streets that meet at least 3 of the criteria are considered priorities. In special instances, factors such as accessibility and mobility are prioritised over other criteria.

Paving Uplift Priorities

Refers to the replacement of old pavers with paving that issuitable to the City Centre Character, as specified in 'Materiality'.

Priority streets for Paving Renewal & Uplift are identified as streets with paving types that meet 3 or more renewal criteria and do not require additional works beyond paving uplift.

Street Reconfiguration Priorities

Refers to streets that have functional failure requiring reconfiguration works including reconfiguration to footpaths, road surface, parking and tree planting.

Priority streets for Paving Renewal & Reconfiguration are identified as streets that meet 3 or more renewal criteria PLUS functional failure.

Transformational Opportunities

Refers to opportunities for transformational projects that achieve long-term City Plan objectives.

Priorities for Transformational Opportunities are identified as projects that are most impactful for achieving City Plan objectives and improving the City Centre streets network.

Paving Maintenance & Renewal

Refers to pure condition-based asset management: Pure condition-based asset management is addressed through regular asset renewal programs and is not included in this strategy.

3. MATERIALITY

What materials should be used during streetscape renewal works?



Street priorities are assigned materials for renewal based on character zones within the City Centre.

Fremantle's City Centre encompasses various cultural precincts with unique character and heritage . Whilst the City Streets Enhancement Strategy aims create a cohesive city paving character, it is important to recognise these distinct character zones and to propose materials reinforce them as unique areas within the City Centre context.

Materials for streetscape works are assigned depending on the character zone that a given street is located within. The City Centre character zones are:

- Walyalup Koort
- Convict Establishment
- City Centre General
- Fremantle Waterfronts

4. RENEWAL STANDARDS

What basic principles need to be met when carrying out streetscape renewal?

General principles are set out as guidelines for carrying out streetscape works to ensure compliance and consistency throughout the City Centre.

Guidelines for street renewal are outlined for the following;

- Minimum footpath widths
- Tree pits and spacing
- Street furniture installation
- Street light installation

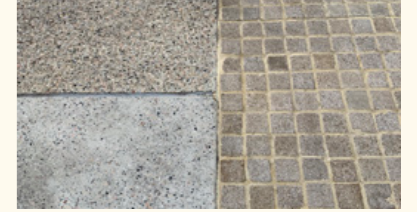
Existing Paving Inventory



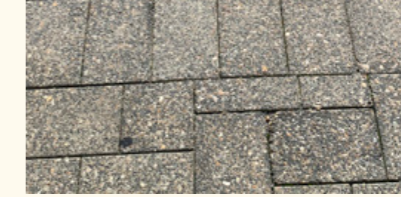
Gunmetal/Golden gunmetal (Urbanstone)



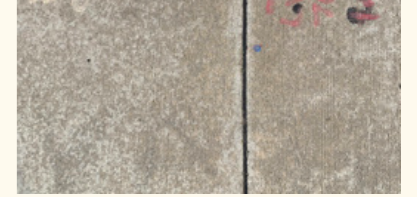
Walyalup Koort mix



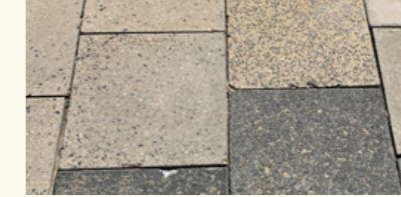
Albany beige



Poured, brushed



Concrete Pavers



Poured, coloured



Poured, exposed agg



Asphalt



Assorted brick



Red asphalt



Limestone pavers

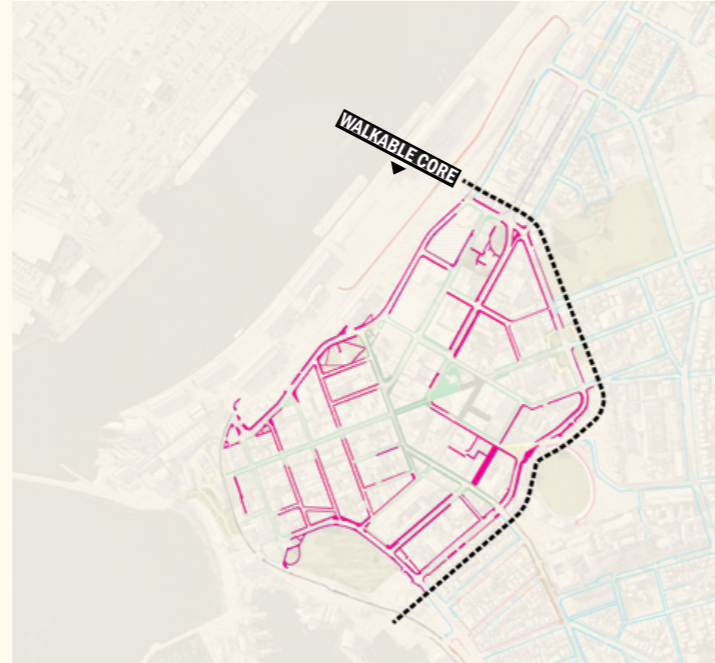


Poured limestone



Multi-criteria Analysis

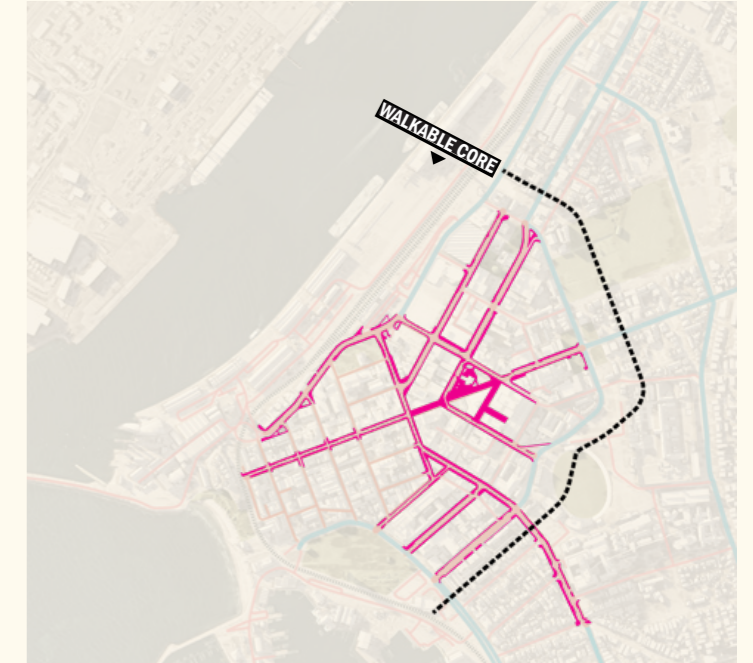
A multi-criteria analysis of city centre streets was undertaken to develop strategic renewal priorities. This analysis identified priorities based on character, mobility, foot traffic, development and access to health care and community services. Streets that met the most criteria are those that are ranked as the highest priorities for renewal.



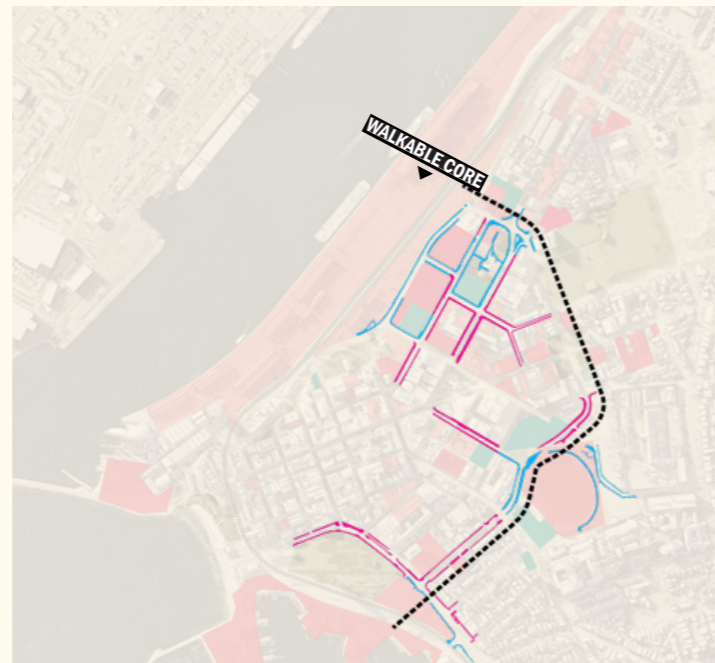
Character
Is the paving type appropriate to the city centre character?



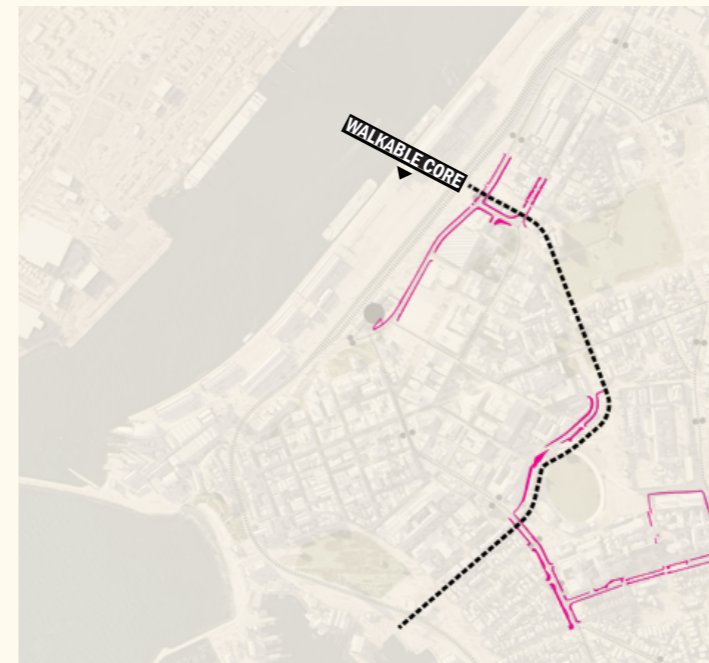
Mobility
Is there a concentration of high priority trip hazards?



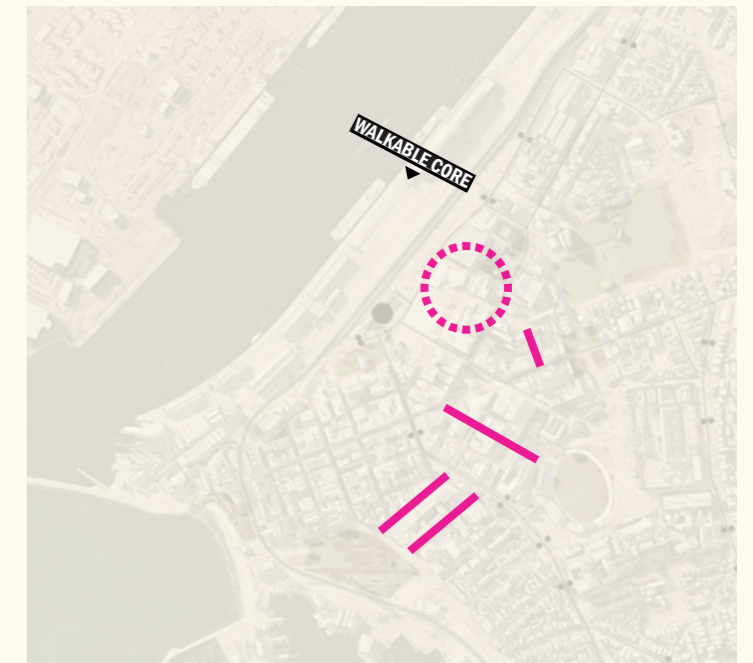
Primary Walking Streets
Does the street experience a high degree of foot traffic? (source: neighbourlytics, 2023)



Development-Primed Areas
Is development planned in the immediate area that may necessitate street renewal?



Healthcare & Community
Does the street provide important connections to healthcare and community services?



Functional Failure
Is the street failing due to issues that cannot be addressed through footpath renewal alone?

Priority Streets Overview*

PAVING UPLIFT

Degree of transformation



- a) Marine Terrace (Norfolk St - Cliff St)
- b) Adelaide Street (William St - Parry St)
- c) Phillimore Street (Market St - Cliff St)
- d) Parry Street (Holdsworth St - Fairbairn ramp)
- e) Leake Street
- f) Point Street (Ellen St - Adelaide St)
- g) Norfolk Street
- h) Elder Place (Market St - Parry St)

STREET RECONFIGURATION

Degree of transformation



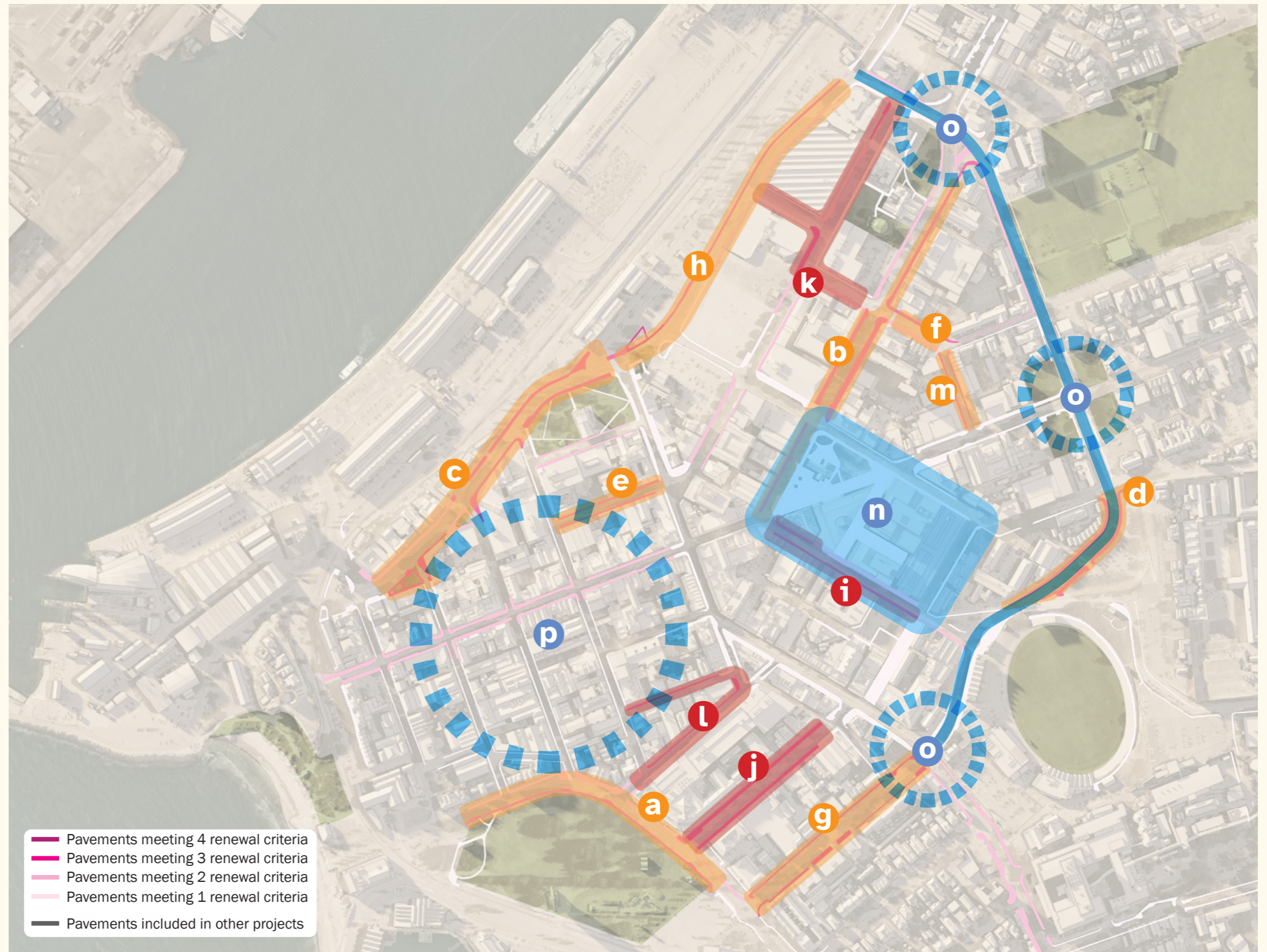
- i) William Street (Adelaide St - Henderson St)
- j) Essex Street
- k) Cantonment Street Precinct
- l) Collie Street, Nairn Street
- m) Josephson Street

TRANSFORMATIONAL OPPORTUNITIES

Degree of transformation:



- n) Walyalup Koort / FOMO City Block
- o) Parry Street Ring Road (Beach St to South Tce)
- p) West End renewal and greening



- Pavements meeting 4 renewal criteria
- Pavements meeting 3 renewal criteria
- Pavements meeting 2 renewal criteria
- Pavements meeting 1 renewal criteria
- Pavements included in other projects

*This list determines general strategic street enhancement priorities and is not ordered by level of priority.

Priority Streets Breakdown*

PAVING UPLIFT
Refers to the replacement of old pavers with paving material that is suitable to the City Centre character, as specified in 'Materiality'.

MARINE TERRACE Cliff St to Norfolk St
Criteria for Renewal:
 Numerous trip or drainage hazards/non compliant
 Poor visual character
 Primary walking street
 Within a development-primed area
 Connection to healthcare / community services
Opportunities in addition to paving renewal:

- Infill tree planting within kerb line (Northern side).
- Bike racks (Northern side).

Adjacent works to align to:

- MRRG Road Renewal from Norfolk St to Cliff St.

PHILLIMORE STREET Cliff St to Market St
Criteria for Renewal:
 Numerous trip or drainage hazards/non compliant
 Poor visual character
 Primary walking street
 Within a development-primed area
 Connection to healthcare / community services
Opportunities in addition to paving renewal:

- Infill tree planting between rearranged car bays.

Adjacent works to align to:

- MRRG Road Renewal from Norfolk St to Mouat St.

ADELAIDE STREET Queen St to Parry St
Criteria for Renewal:
 Numerous trip or drainage hazards/non compliant
 Poor visual character
 Primary walking street
 Within a development-primed area
 Connection to healthcare / community services
Opportunities in addition to paving renewal:

- Infill tree planting within kerb line.

Adjacent works to align to:

- Kaarl Boyak Naariny public artwork

NORFOLK STREET Cliff St to Market St
Criteria for Renewal:
 Numerous trip or drainage hazards/non compliant
 Poor visual character
 Primary walking street
 Within a development-primed area
 Connection to healthcare / community services
Opportunities in addition to paving renewal:

- Infill tree planting within kerb line.

Adjacent works to align to:

- Norfolk Street Extension

PARRY STREET Holdsworth St to Fairbarin Rp
Criteria for Renewal:
 Numerous trip or drainage hazards/non compliant
 Poor visual character
 Primary walking street
 Within a development-primed area
 Connection to healthcare / community services
Opportunities in addition to paving renewal:

- Infill tree planting within kerb line

Adjacent works to align to:

- Future separated, on-road bike lanes.
- Fremantle Oval Masterplan.

POINT STREET Adelaide St to Ellen St
Criteria for Renewal:
 Numerous trip or drainage hazards/non compliant
 Poor visual character
 Primary walking street
 Within a development-primed area
 Connection to healthcare / community services
Opportunities in addition to paving renewal:

- Pavers failing due to vehicle crossover. To be replaced with trafficable pavers.
- Infill tree planting within kerb line.

LEAKE STREET Pakenham St to Market St
Criteria for Renewal:
 Numerous trip or drainage hazards/non compliant
 Poor visual character
 Primary walking street
 Within a development-primed area
 Connection to healthcare / community services
Opportunities in addition to paving renewal:

- Pavers failing due to vehicle crossover. To be replaced with trafficable pavers.
- Infill tree planting within kerb line.
- 1-way street to provide significant greening.

ELDER PLACE Market St to Parry St
Criteria for Renewal:
 Numerous trip or drainage hazards/non compliant
 Poor visual character
 Primary walking street
 Within a development-primed area
 Connection to healthcare / community services
Opportunities in addition to paving renewal:

- Infill tree planting within kerb line.

Adjacent works to align to:

- Elders Woolstores Development
- PSP
- Bus interchange

STREET RECONFIGURATION
Refers to paving uplift PLUS street reconfiguration works, including reconfiguration of footpaths, road surface, parking and tree planting.

WILLIAM STREET Henderson St to Adelaide St
Criteria for Renewal:
 Numerous trip or drainage hazards/non compliant
 Poor visual character
 Primary walking street
 Within a development-primed area
 Connection to healthcare / community services
Opportunities for reconfiguration:

- Shared, pedestrian priority zone throughout
- Infill tree planting
- Bike racks
- Urban greening

Adjacent works to align to:

- Town Teams William Street Reimagined
- Walyalup Koort Masterplan
- Fremantle Oval Redevelopment

ESSEX STREET Essex Ln to Marine Tce
Criteria for Renewal:
 Numerous trip or drainage hazards/non compliant
 Poor visual character
 Primary walking street
 Within a development-primed area
 Connection to healthcare / community services
Opportunities for reconfiguration:
 Reconfiguration of 45° parking and possible modal filter creating significant opportunities for urban greening, naturalisation and water sensitive urban design in alignment with City Plan objectives.

CANTONMENT STREET Cantonment St, Point St, Goldsbrough St
Criteria for Renewal:
 Numerous trip or drainage hazards/non compliant
 Poor visual character
 Primary walking street
 Within a development-primed area
 Connection to healthcare / community services
Opportunities for reconfiguration:
 Multiple development sites within the Cantonment Street precinct necessitate street design to accommodate an influx of new residents and business. Concept design to be carried out through the Cantonment Street Precinct study. Renewal to be coordinated with new developments.

Adjacent works to align to:

- Elders Woolstore Redevelopment
- 8 Point Street development
- Parry St/Queen Victoria St intersection works
- Princess May Park masterplan

COLLIE STREET Nairn St to Marine Tce
Criteria for Renewal:
 Numerous trip or drainage hazards/non compliant
 Poor visual character
 Primary walking street
 Within a development-primed area
 Connection to healthcare / community services
Opportunities for reconfiguration:
 Possible implementation of a 1-way street, allowing widening of footpaths to alleviate non-compliant pinch-points and creating significant tree planting opportunities.

JOSEPHSON STREET Point St to High St
Criteria for Renewal:
 Numerous trip or drainage hazards/non compliant
 Poor visual character
 Primary walking street
 Within a development-primed area
 Connection to healthcare / community services
Opportunities for reconfiguration:
 Non-compliant due to footpath width and pinch points. Opportunities for reducing carriageway way with and widening footpath to be explored.

TRANSFORMATIONAL OPPORTUNITIES
Opportunities for transformational projects that achieve long-term City Plan objectives.

PARRY STREET RING ROAD
Parry Street is highly significant for City Centre transformation as the strategic ring road around the city core. Some opportunities considered for Parry Street include;

- Continuous dedicated cycle lanes on both sides of the street.
- Urban greening opportunities in strategic locations.
- Investigation for potential WSUD infrastructure to collect, clean and filter storm water.
- Reduce speed limits to 30km/h in line with expectations for entire city core area.
- Opportunities to restrict / filter out traffic through modal filters at key intersections between Parry and perpendicular streets entering the city core.
- Potential for 10+ years considerations for public transport networks, for example, a circular bus service around the city core.
- Focused investment into streetscapes in key city entry points at Queen Victoria St, High St and Marine Tce intersections

WALYALUP KOORT/FOMO CITY BLOCK
Traffic flow changes/one-way streets throughout the Walyalup Koort/FOMO city block bound by William St, Queen St, Adelaide St, Henderson St and Holdsworth St. Opportunities include;

- 30km/h speed limit and shared-zones throughout Walyalup Koort.
- Realignment /reduction of parking on Adelaide St.
- Possible one-way loop between William, Henderson, Queen and Adelaide St.
- Significant urban greening opportunities through reduced carriageways.
- Incorporation of the William Street Reimagined greening interventions

WEST END RENEWAL & GREENING
Canopy cover in the West End is very limited and paving condition/paving type varies significantly throughout. Opportunity to holistically assess the West End to;

- Establish a legible and cohesive precinct identity.
- Improve pedestrian experience and amenity.
- Explore opportunities for modal filters and micro parks.
- Reduce congestion through the incremental thinning out of parking.
- Placement of trees to maintain important views to the port.
- Identify tree species selection that compliments the areas heritage identity.

*This list determines general strategic street enhancement priorities and is not ordered by level of priority.

Character Zones

Fremantle's city centre encompasses various cultural precincts with unique character and heritage. Although the purpose of the City Streets Paving Enhancement Strategy is to create a cohesive city paving character, it is important to recognise these distinct character zones and to propose materials reinforce them as unique areas within the city centre context.

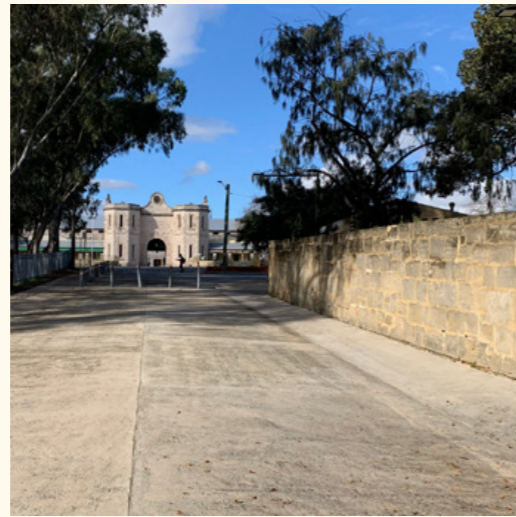
Care must be given within the city centre to ensure that paving with heritage value is retained and protected.

The city centre character zones are:

 **Walyalup Koort**




 **Convict Quarter**



 **City Centre General**



 **Fremantle Waterfronts**

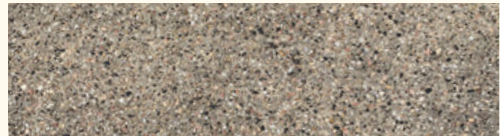


Walyalup Koort

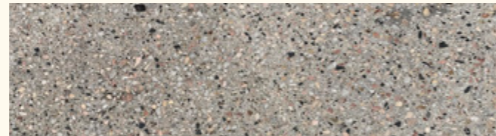


Walyalup Koort is the new cultural heart of Fremantle, paving here is particularly distinctive and renewal works are to use like-for-like materials. Replacement of older pavements are to tie into recent Walyalup Civic Centre works as closely as possible, subject to availability.

PAVING RENEWAL PALETTE



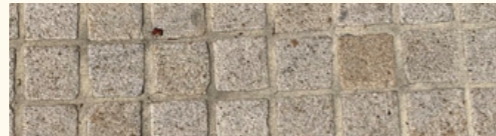
Type: Exposed aggregate concrete
Colour: Beige
Size: To engineers specification
Finish: 1-2mm or 3-5mm exposure



Type: Exposed aggregate concrete
Colour: Grey
Size: To engineers specification
Finish: 1-2mm or 3-5mm exposure



Type: Cobbles
Colour: Amber
Size: 90x90x90mm
Finish: Split



Type: Cobbles
Colour: Amber
Size: 90x90x90mm
Finish: Bush hammered



Type: Cobbles
Colour: Granite
Size: 90x90x90mm
Finish: Split

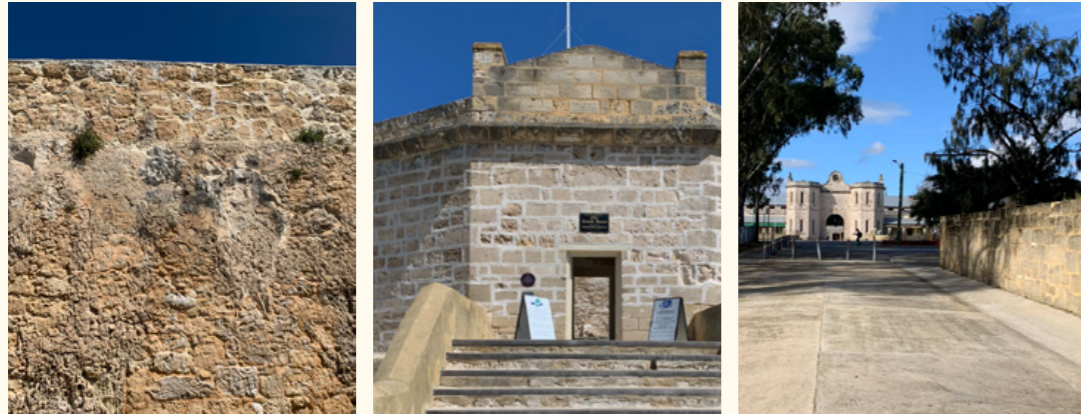


Type: Stone pavers
Colour: Limestone
Size: 400x400x60mm
Finish: Natural



- All necessary design approvals to be sought prior to commencement of works.
- Necessary deviations from the proposed palette to be assessed on a case-by-case basis.

Convict Quarter



Paving renewal in the Convict Establishment character zone is to reflect the prominent presence of limestone in convict-era built form and pre-colonial landforms. Key points of reference include Fremantle Prison, the Roundhouse, Manjaree limestone outcrops and Fairbairn ramp. Paving works at J-Shed and the Old Courthouse are examples of recent successful projects that contribute to the desired paving character of the precinct.

PAVING RENEWAL PALETTE

STANDARD PAVING



Type: Masterpave Granite paver
Colour: Arctic
Size: 200x200x60mm
Layout: Stretcher bond

HIGH QUALITY PAVING (key locations)



Type: Limecrete - 0% oxide
Size: 150mm (trafficable), 100mm (non-trafficable)
Colour: White cream grey
Finish: Coarse scraped finish with no picture framing



- All necessary design approvals to be sought prior to commencement of works.
- Necessary deviations from the proposed palette to be assessed on a case-by-case basis.

City Centre General

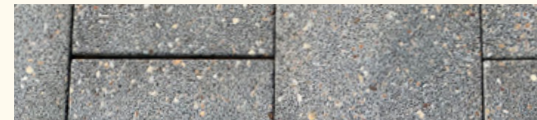


Paving renewal in the city centre is to build on the existing prominent paving types: two predominant Urbanstone pavers exist in the city centre, one of which is primarily isolated to the West End, while the other is found throughout the broader city centre. For this reason the West End has been isolated as a distinct sub-precinct within the broader city Centre Character zone that has a subtly distinct paving renewal palette. Pavers to be reused wherever possible.

PAVING RENEWAL PALETTE

City Centre General

Pedestrian-only



Type: Urbanstone pavers
Colour: Golden gunmetal
Size: 400x400x60mm
Finish: Shotblasted
Layout: Stretcher bond

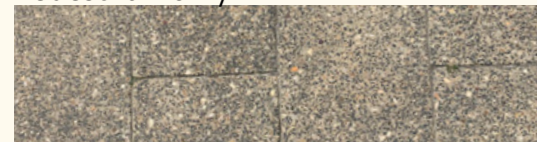
Trafficable



Type: Urbanstone pavers
Colour: Golden Gunmetal
Size: 300x200x60mm
Finish: Shotblasted
Layout: Herringbone

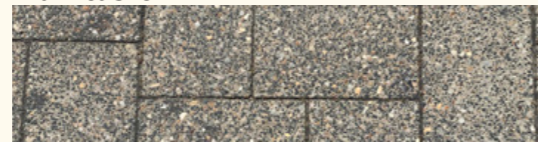
West End

Pedestrian-only



Type: Urbanstone pavers
Colour: Albany grey
Size: 300x600x60mm
Finish: Shotblasted
Layout: Stretcher bond

Trafficable



Type: Urbanstone pavers
Colour: Albany grey
Size: 300x200x60mm
Finish: Shotblasted
Layout: Herringbone



- All necessary design approvals to be sought prior to commencement of works.
- Necessary deviations from the proposed palette to be assessed on a case-by-case basis.

Fremantle Waterfronts



Collaborate with Fremantle Ports and Department of Planning to ensure new paving materials are sensitive to the waterfront context and industrial heritage.

EXISTING PAVING PALETTE



Asphalt



Painted graphics on asphalt



Poured concrete



Timber decking



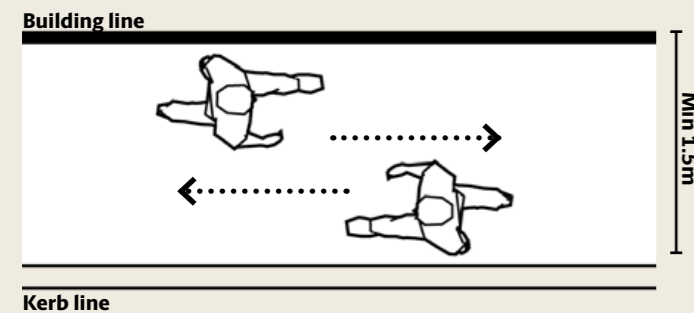
Paving Renewal Guide*

Footpath Width

In accordance with City of Fremantle Footpath Guidelines & Specifications.

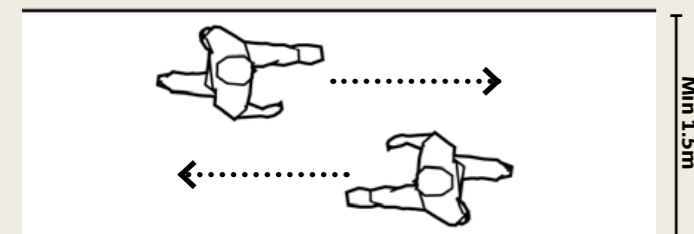
RESIDENTIAL AREAS:

1.5 meters to accommodate predominantly pedestrian traffic, allowing for comfortable passing of two people.



RESERVES AND FORESHORE AREAS:

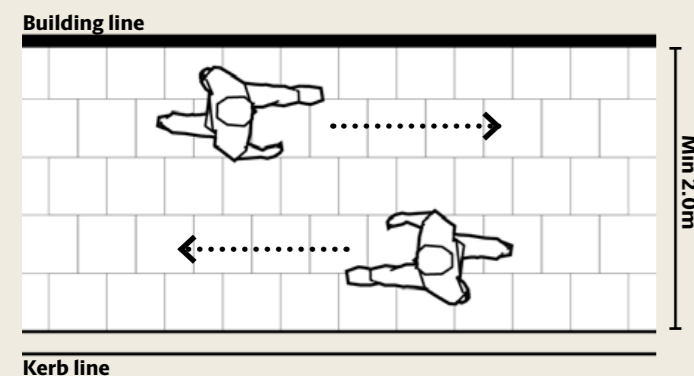
1.5 meters to accommodate predominantly pedestrian traffic, allowing for comfortable passing of two people.



COMMERCIAL AND HIGH-USE AREAS:

2.0 meters minimum to handle higher use areas and promote safety.

Applies to all streets within the City Centre.



Tree Pits and Spacing

GENERAL PRINCIPLES:

- Tree pits to be installed where possible within kerb line.
- Assess efficiency of parking bays: where possible rearrange bays to allow tree planting.
- Removal of car bays for tree planting to be assessed on a case-by-case basis.

Small Trees (3-5m mature diameter)

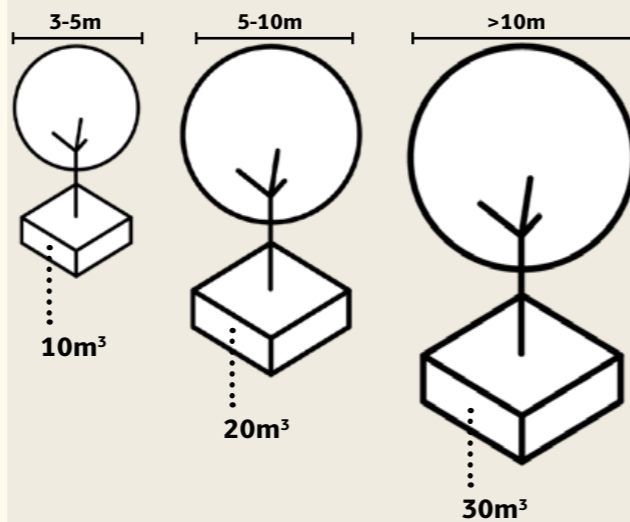
10m³ minimum rootable soil volume

Medium Trees (5-10m mature diameter)

20m³ minimum rootable soil volume

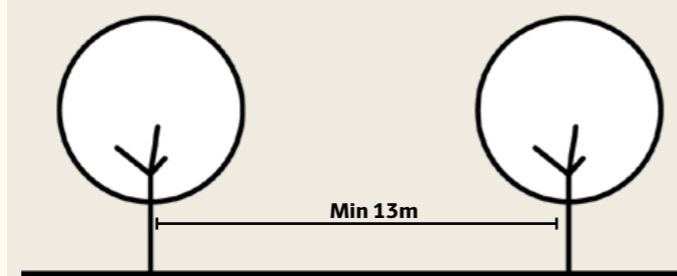
Large Trees (>10m mature diameter)

30m³ minimum rootable soil volume



TREE SPACING:

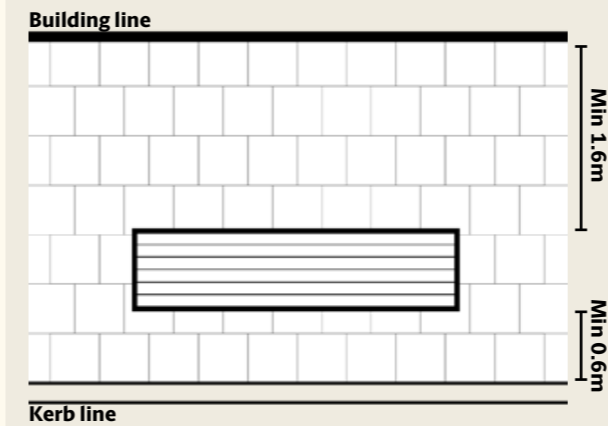
Minimum 13m centres



Street Furniture

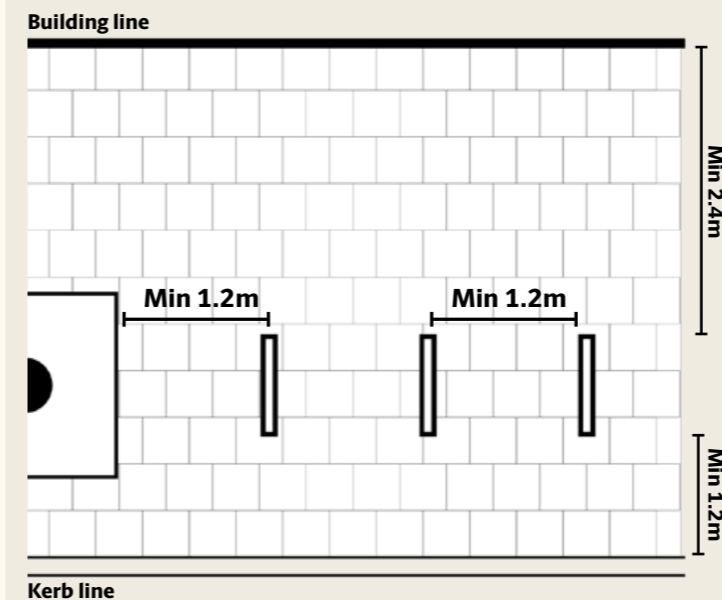
BENCHES & BINS:

- Minimum 1500mm from building line.
- Minimum 600mm from face of kerb.



BIKE RACKS:

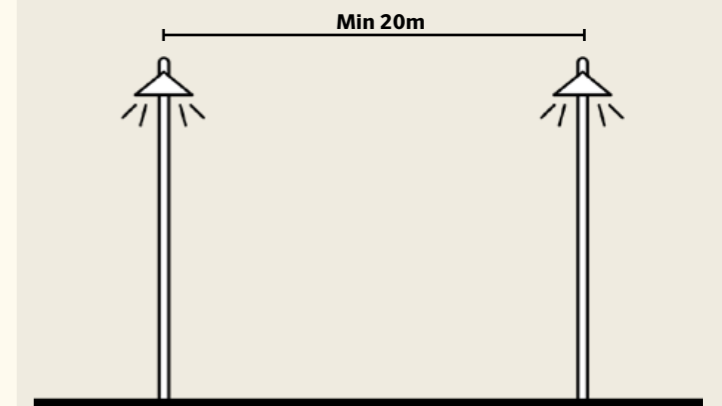
- Minimum 2400mm from building line
- Minimum 1000mm from face of kerb
- Minimum 1200mm from tree grate or other obstacles
- Minimum 1200mm spacing between racks



Lighting

GENERAL PRINCIPLES:

- Minimum 20 meter spacing of light poles.
- Case-by-case assessment of required lighting category to determine pole height.



*To be used as a guide only. Necessary deviations to be assessed on a case-by-case basis.

Suburbs & Local Centres

Character Zones

Paving areas beyond the city centre zone are characterised by either being suburban or within a local centre. Whilst suburban areas are to be renewed with standard poured concrete, local centres have scope for special treatments to achieve a paving character that differentiates them from the broader suburbs and reflects the character and heritage of the area.

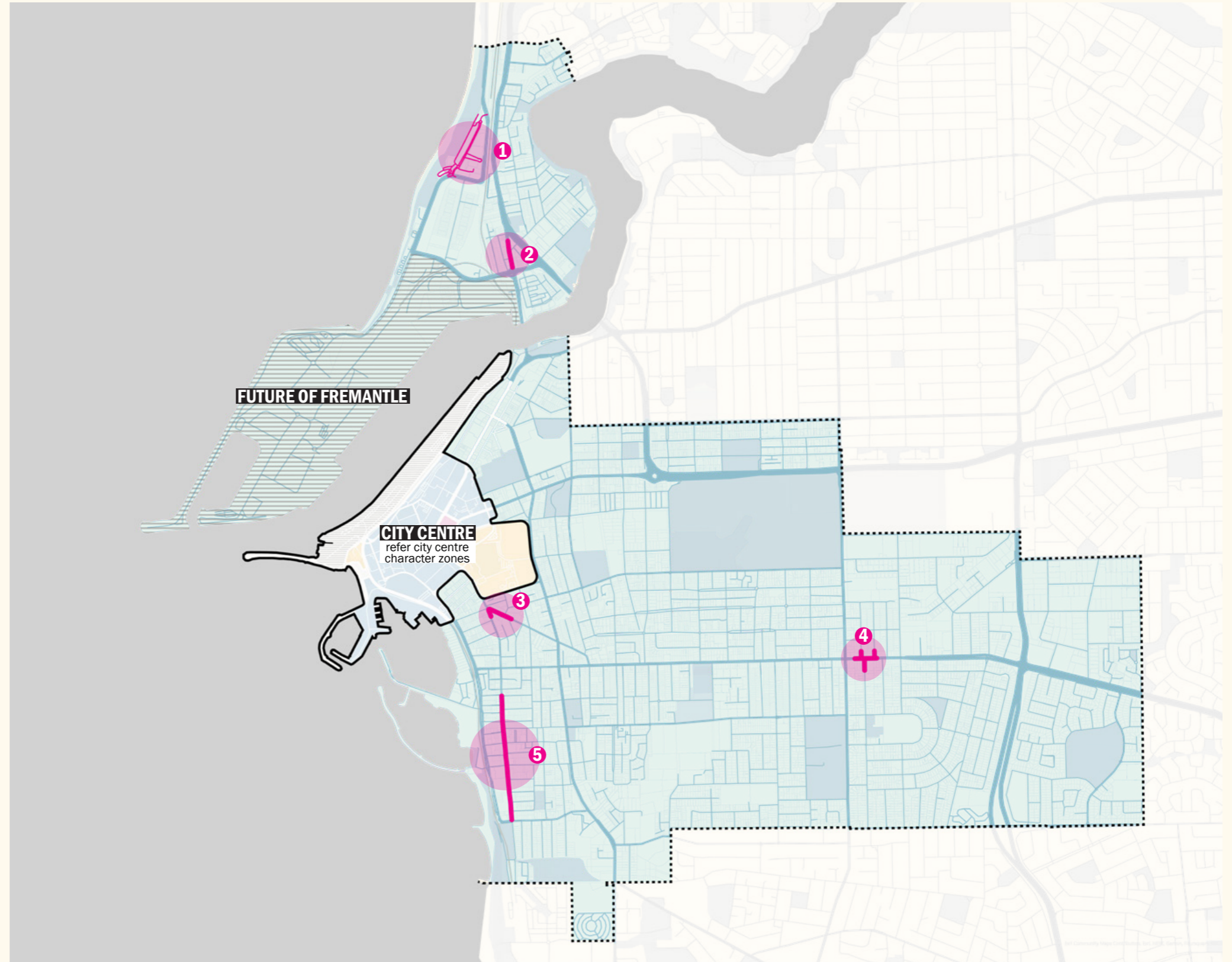
SUBURBS



Type: Poured concrete
Colour: Standard grey
Size: To engineers specifications
Finish: Broomed, no picture framing on joints

LOCAL CENTRES

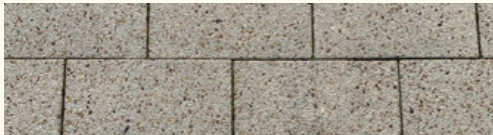
-  Leighton Beach
-  North Fremantle town centre
-  Wray Avenue
-  Hilton town centre
-  South Fremantle



Leighton Beach



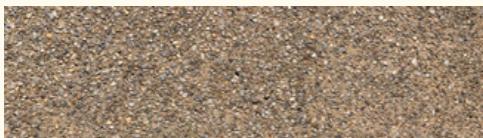
EXISTING PAVING PALETTE



Type: Urbanstone paver
Colour: Albany Beige
Size: 400x200x60mm
Layout: Stretcher bond



Type: Cobbles
Colour: Varies
Size: 90x90x90mm
Layout: Stretcher bond



Type: Exposed aggregate concrete
Colour: -
Size: To engineers specification
Finish: 1-2mm or 3-5mm exposure

PAVING RENEWAL*

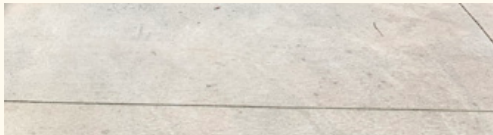
Leighton beach paving character is unique to the precinct. Paving renewal in this area is to match existing materials as closely as possible, subject to availability.



North Fremantle



EXISTING PAVING PALETTE



Type: Poured concrete
Colour: Grey
Size: -
Finish: Broomed

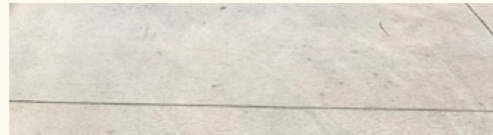


Type: Cobble banding
Colour: Grey
Size: -
Layout: Stack bond



Type: Asphalt
Colour: Red
Size: -
Finish: -

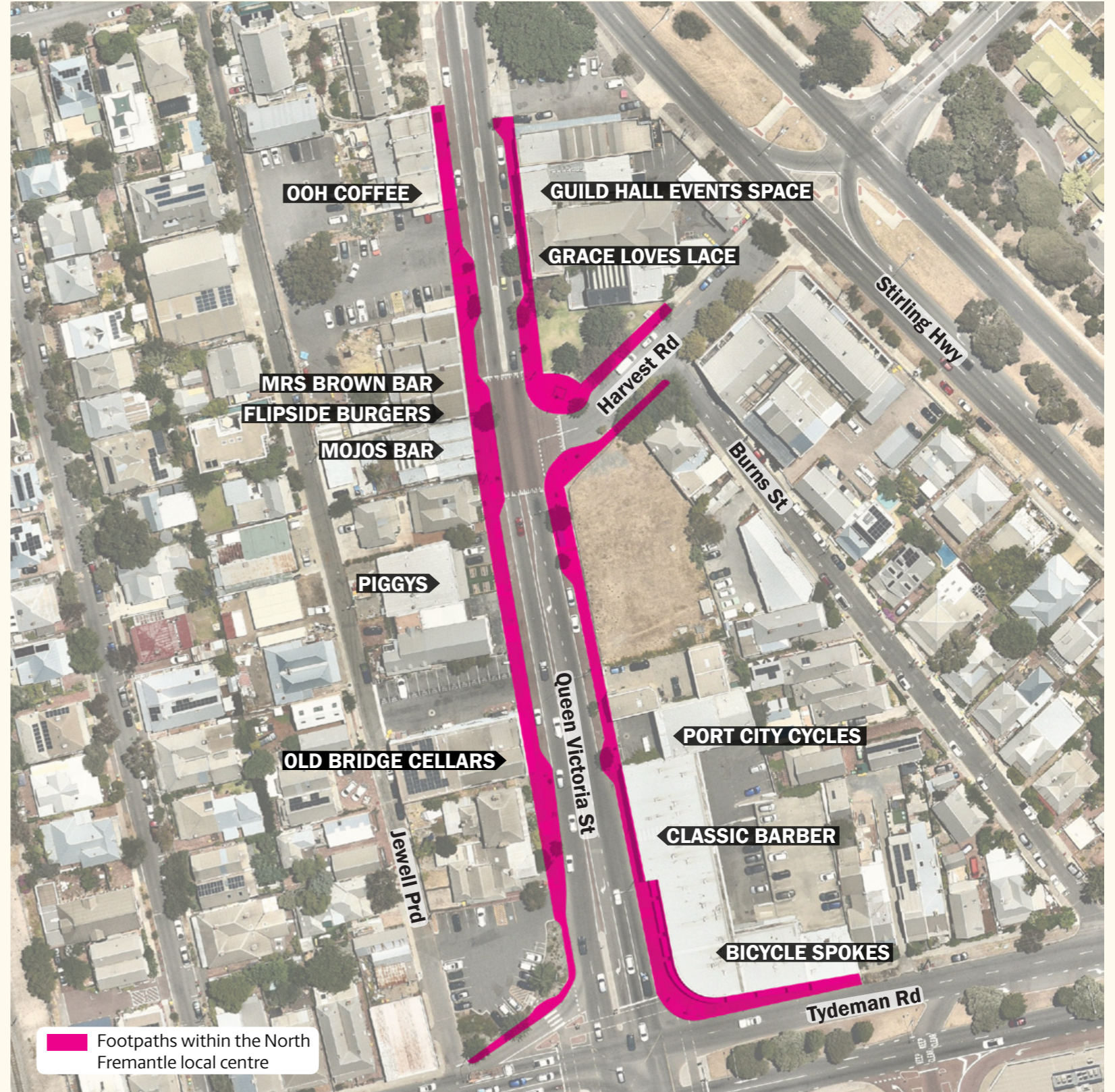
PAVING RENEWAL



Type: Poured concrete
Colour: Standard grey
Size: To engineers specifications
Finish: Broomed, no picture framing on joints

Recommendations*

Primary material to be poured concrete however opportunities for tree planting and use of high quality materials in select locations that reflect the heritage and character of the suburb are to be explored through paving renewal works. Existing interpretive cobble banding is dated and should be replaced during renewal works.



Hilton



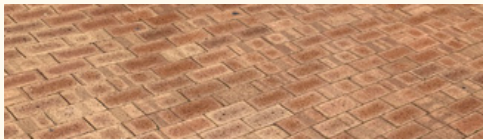
EXISTING PAVING PALETTE



Type: Poured concrete with graphics
Colour: Grey/orange
Size: -
Finish: Broomed



Type: Brick
Colour: Grey
Size: 200x100mm
Layout: Herringbone



Type: Brick
Colour: Red
Size: 200x100mm
Layout: Stackbond



Type: Concrete pavers
Colour: Grey
Size: 600x600mm
Layout: Stretcherbond

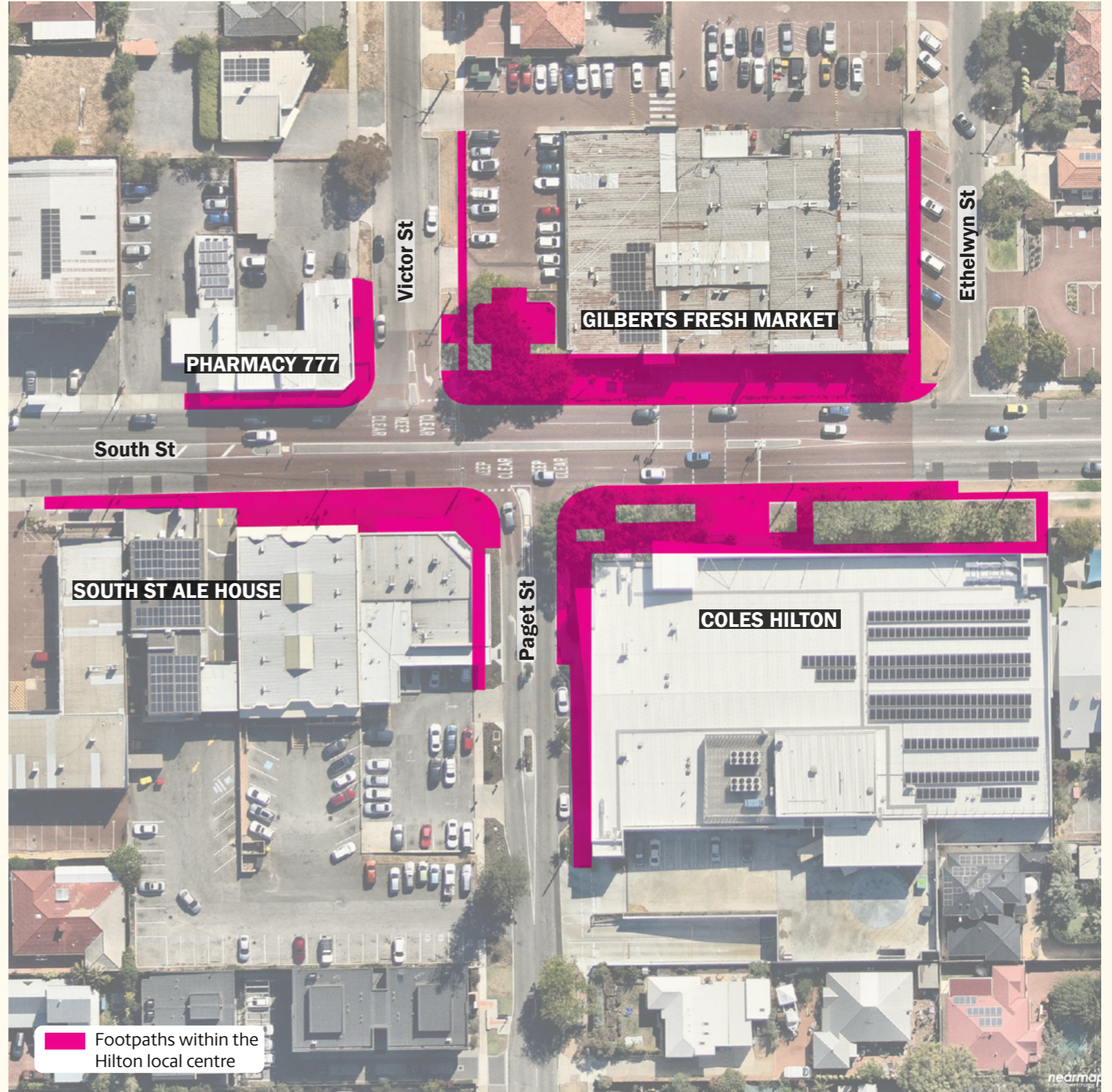
PAVING RENEWAL



Type: Poured concrete
Colour: Standard grey
Size: To engineers specifications
Finish: Broomed, no picture framing on joints

Recommendations*

Primary material to be poured concrete however opportunities for tree planting and use of high quality materials in select locations that reflect the heritage and character of the suburb are to be explored through paving renewal works. Existing interpretive banding is dated and should be replaced during renewal works. Grey bricks are to be confined to the Coles forecourt only.

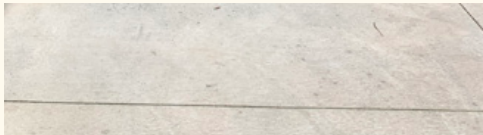


Footpaths within the Hilton local centre

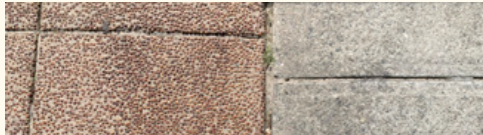
Wray Avenue



EXISTING PAVING PALETTE

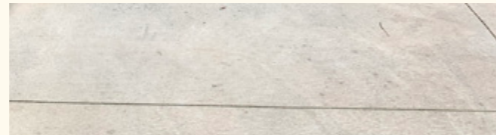


Type: Poured concrete
Colour: Grey
Size: -
Finish: Broomed



Type: Exposed aggregate pavers (banding)
Colour: Brown
Size: 600x600mm
Layout: Stackbond

PAVING RENEWAL



Type: Poured concrete
Colour: Standard grey
Size: To engineers specifications
Finish: Broomed, no picture framing on joints

Recommendations*

Primary material to be poured concrete however opportunities for tree planting and use of high quality materials in select locations that reflect the heritage and character of the suburb are to be explored through paving renewal works. Existing interpretive banding is dated and should be replaced during renewal works.



South Fremantle



EXISTING PAVING PALETTE



Type: Poured concrete with graphics
Colour: Grey
Size: -
Finish: Broomed



Type: Asphalt
Colour: Red
Size: -
Finish: -

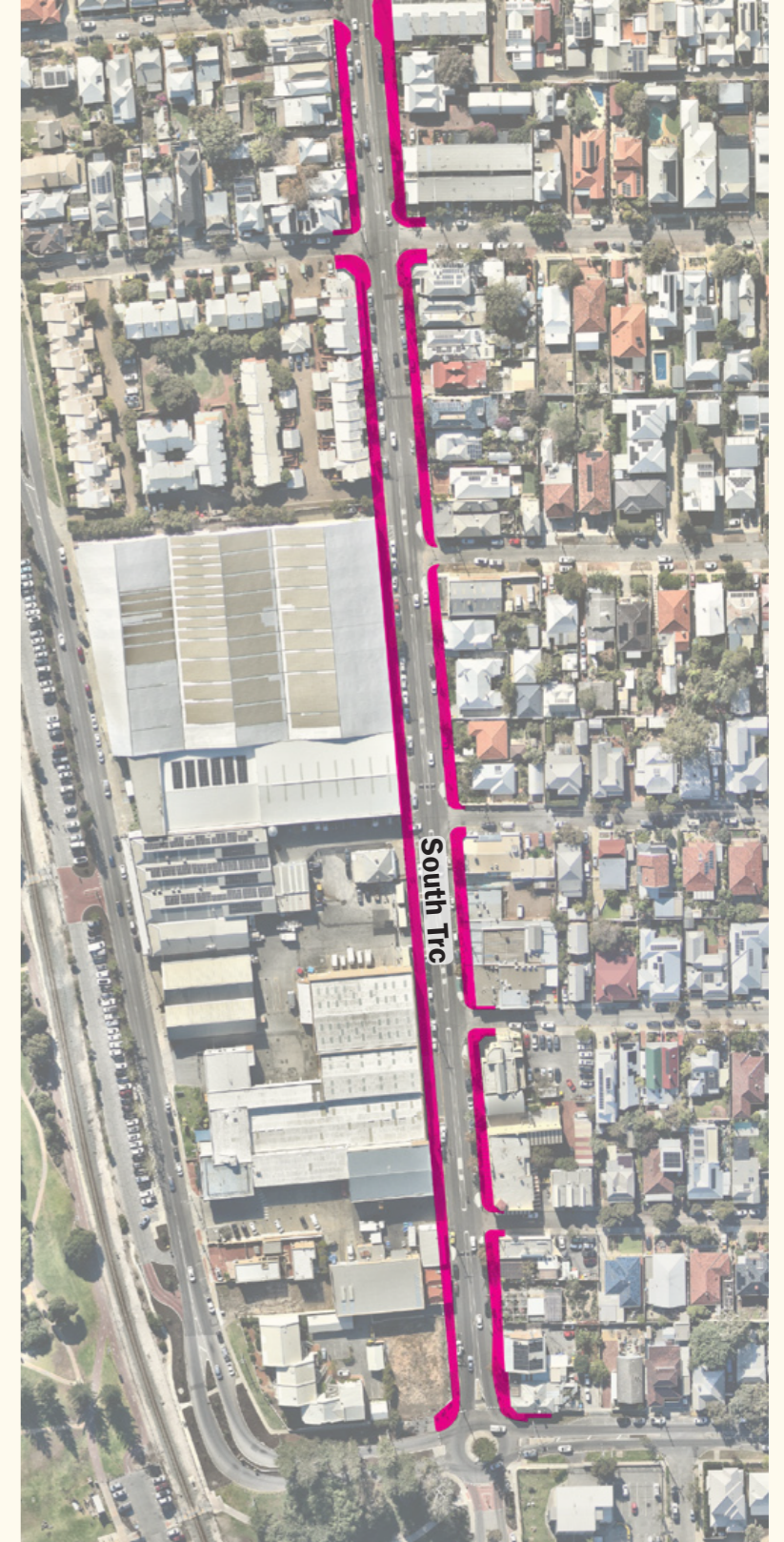
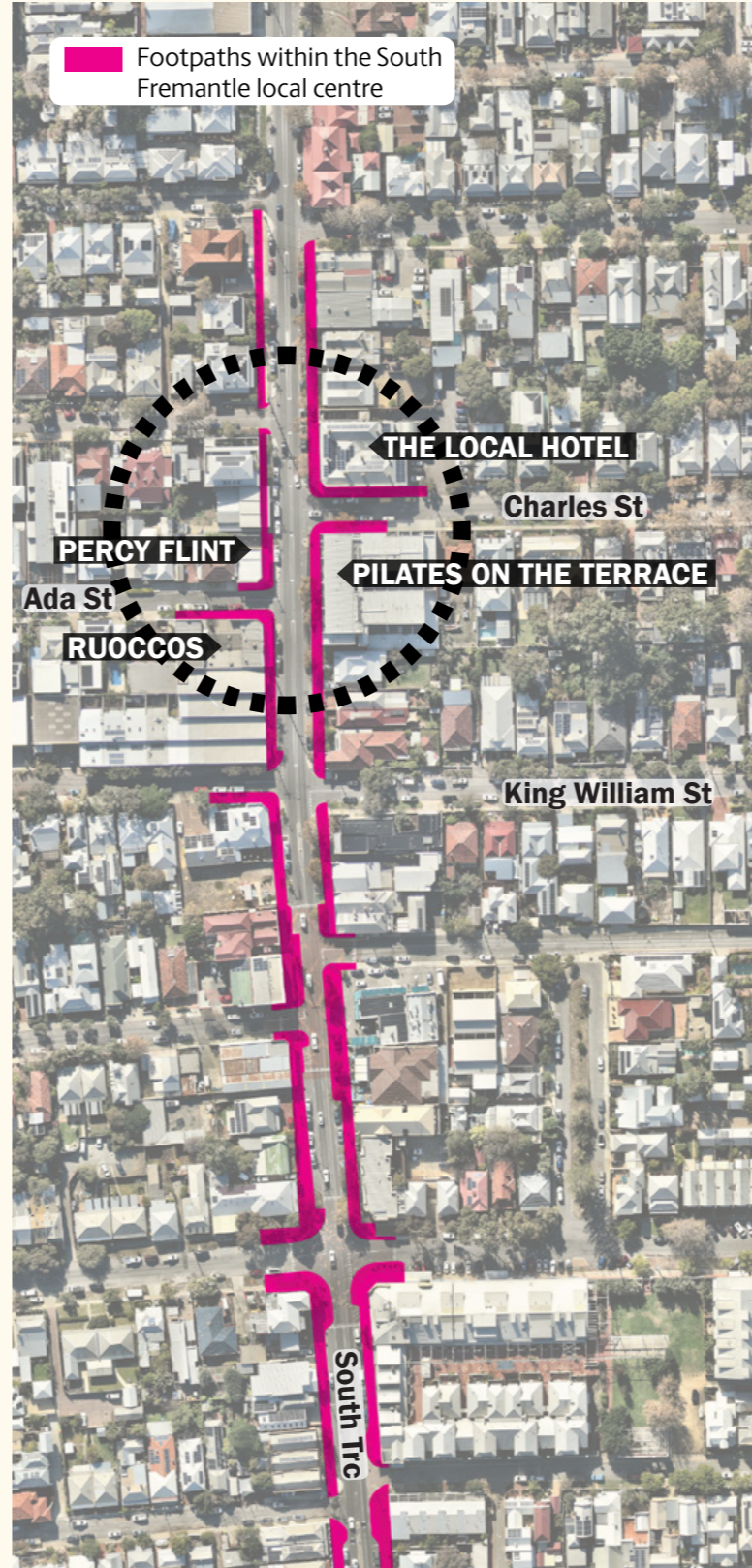
PAVING RENEWAL



Type: Poured concrete
Colour: Standard grey
Size: To engineers specifications
Finish: Broomed, no picture framing on joints

Recommendations*

Primary material to be poured concrete however opportunities for tree planting and use of high quality materials in select locations that reflect the heritage and character of the suburb are to be explored through paving renewal works.





Contact

City of Fremantle
Walyalup Civic Centre
151 High Street
Fremantle WA 6160

T 1300 MY FREO (1300 693 736)
F 08 9430 4634
TTY 08 9432 9777

FREMANTLE.WA.GOV.AU

Alternate formats available upon request.
